

332 WASHINGTON STREET

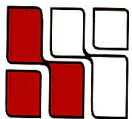
WELLESLEY HILLS, MA



THE FRASER MEDICAL BUILDING

**Situated across the street from the Wellesley Hills Post Office and
Commuter Rail Station; just west of the junction of Rte. 9 & 16**

ON-SITE PARKING



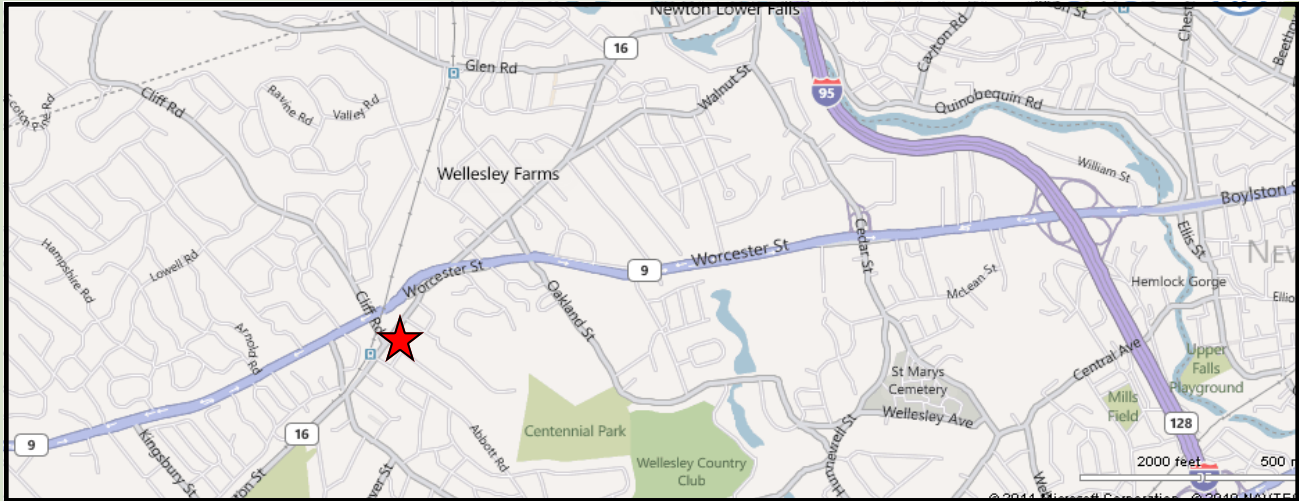
**HAYNES
MANAGEMENT, INC.**

781-235-4300

www.haynesmanagement.com

All information furnished regarding this property is from sources deemed reliable and is submitted subject to errors, omissions, modifications and withdrawals without notice. No warranty or representation is made as to the accuracy of any information contained herein.

MEDICAL OFFICE SUITE AVAILABLE: 813 R.S.F

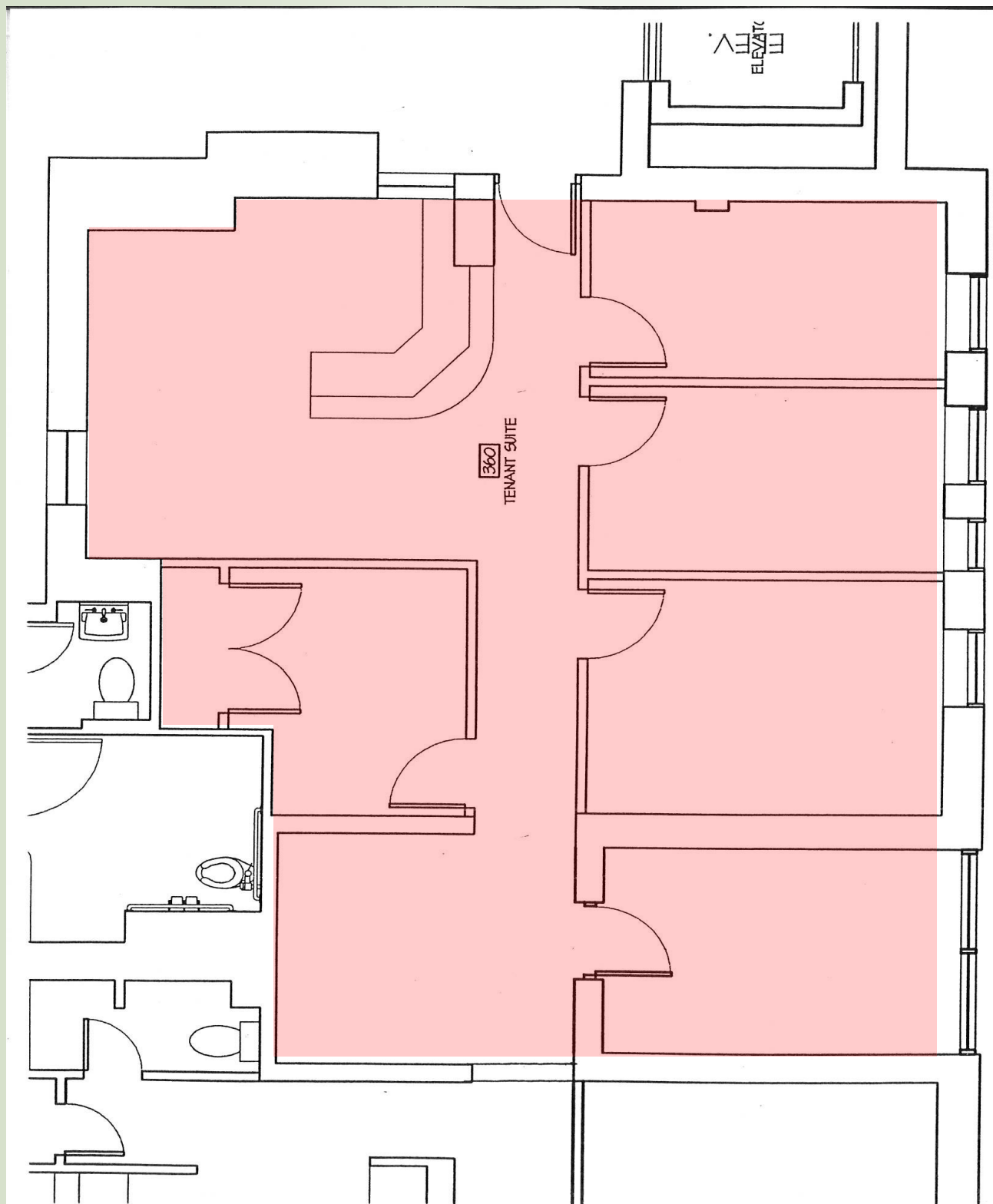


- **Lots of Operable Windows**
 - **Exposed Brick**
 - **Handicap Accessible**
- **Convenient on-site parking with additional parking on Street**
- **Many Amenities in Walking Distance**



**For more information:
781-235-4300
www.haynesmanagement.com**

**MEDICAL OFFICE SUITE AVAILABLE:
813 R.S.F**



**For more information:
781-235-4300
www.haynesmanagement.com**