

326 WASHINGTON STREET ANNEX

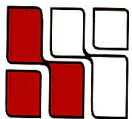
WELLESLEY HILLS, MA



Currently Available: 1,545 S.F - Entire Second Floor

**Situated across the street from the Wellesley Hills Post Office and
Commuter Rail Station; just west of the junction of Rte. 9 & 16**

ON-SITE PARKING

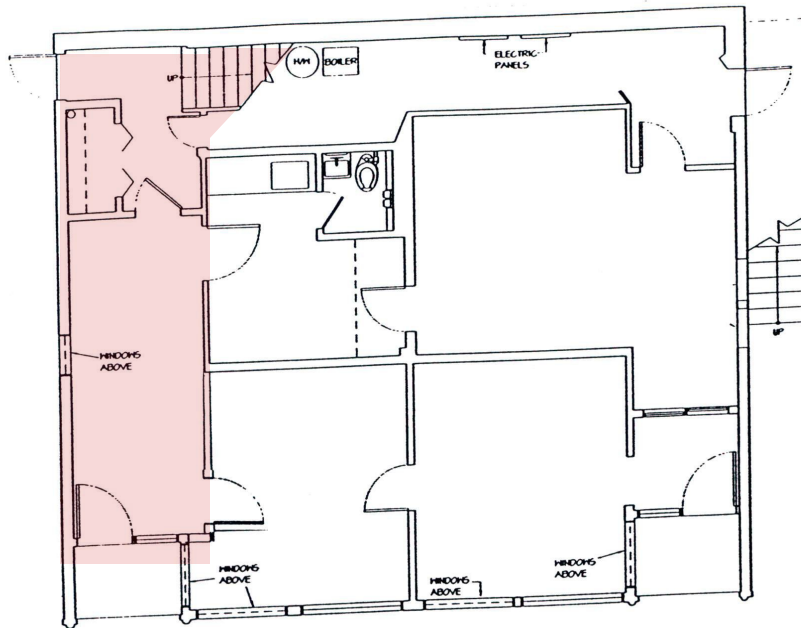


**HAYNES
MANAGEMENT, INC.**

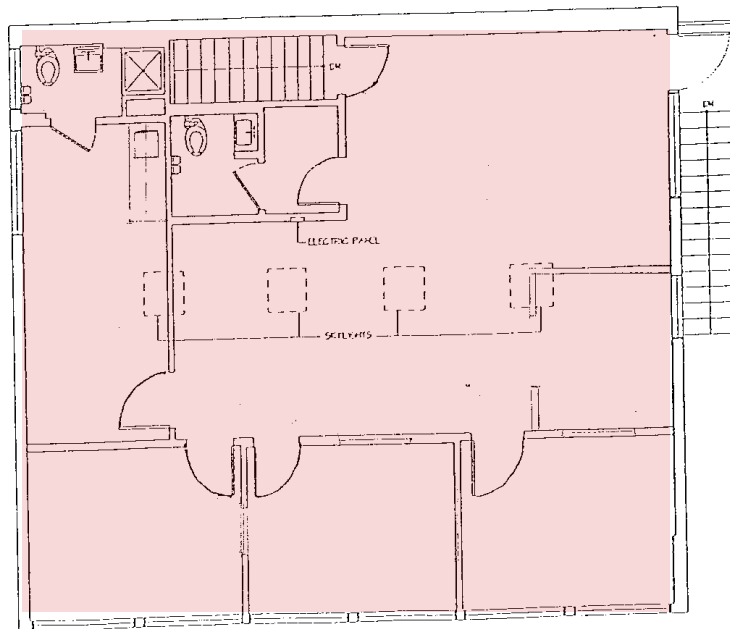
781-235-4300

www.haynesmanagement.com

326 Washington Street Annex 1,545 S.F



First Floor



Second Floor

For more information:
781-235-4300
www.haynesmanagement.com