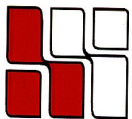


65 WALNUT STREET

WELLESLEY HILLS, MA



**Medical Suite Available:
1,673 R.S.F.**



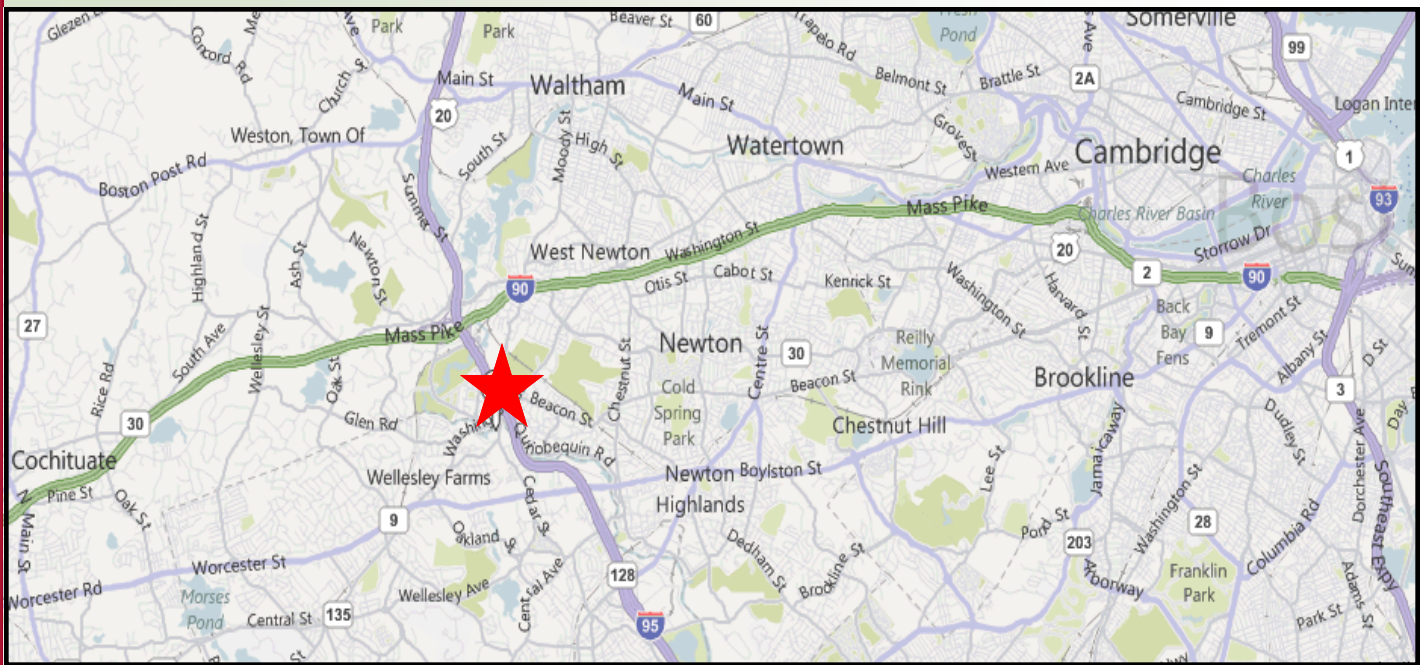
**HAYNES
MANAGEMENT, INC.**

781-235-4300

www.haynesmanagement.com

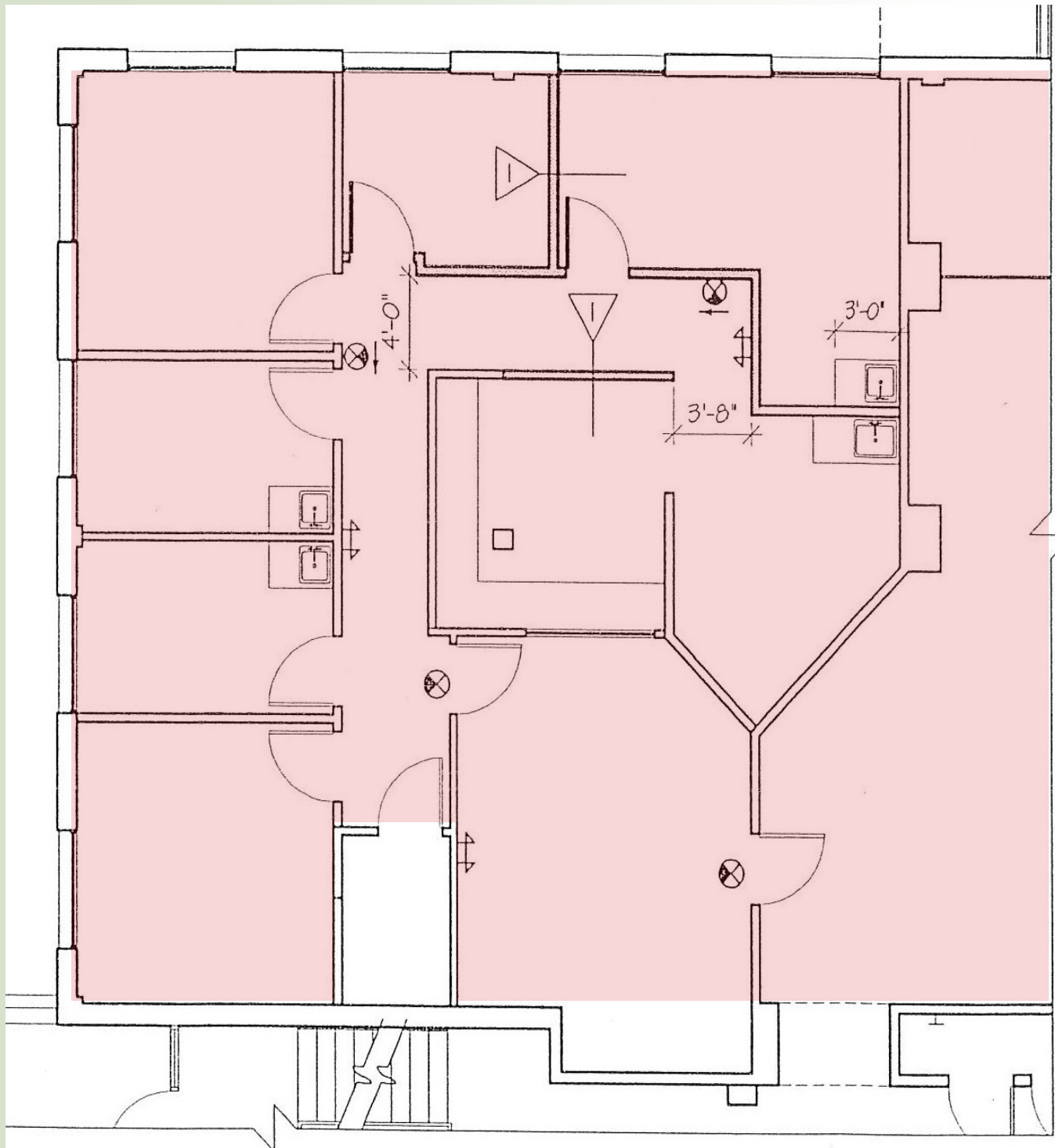
All information furnished regarding this property is from sources deemed reliable and is submitted subject to errors, omissions, modifications and withdrawals without notice. No warranty or representation is made as to the accuracy of any information contained herein.

MEDICAL SUITE AVAILABLE: 1,673 R.S.F



For more information:
781-235-4300
www.haynesmanagement.com

**MEDICAL SUITE AVAILABLE:
1,673 R.S.F**



**For more information:
781-235-4300
www.haynesmanagement.com**