

**65 WALNUT STREET  
WELLESLEY**



Located less than a 1/4  
a mile from  
Newton-Wellesley Hospital

**MEDICAL OFFICE SPACE**

**Currently Available:  
1,167 RSF**



**HAYNES  
MANAGEMENT, INC.**

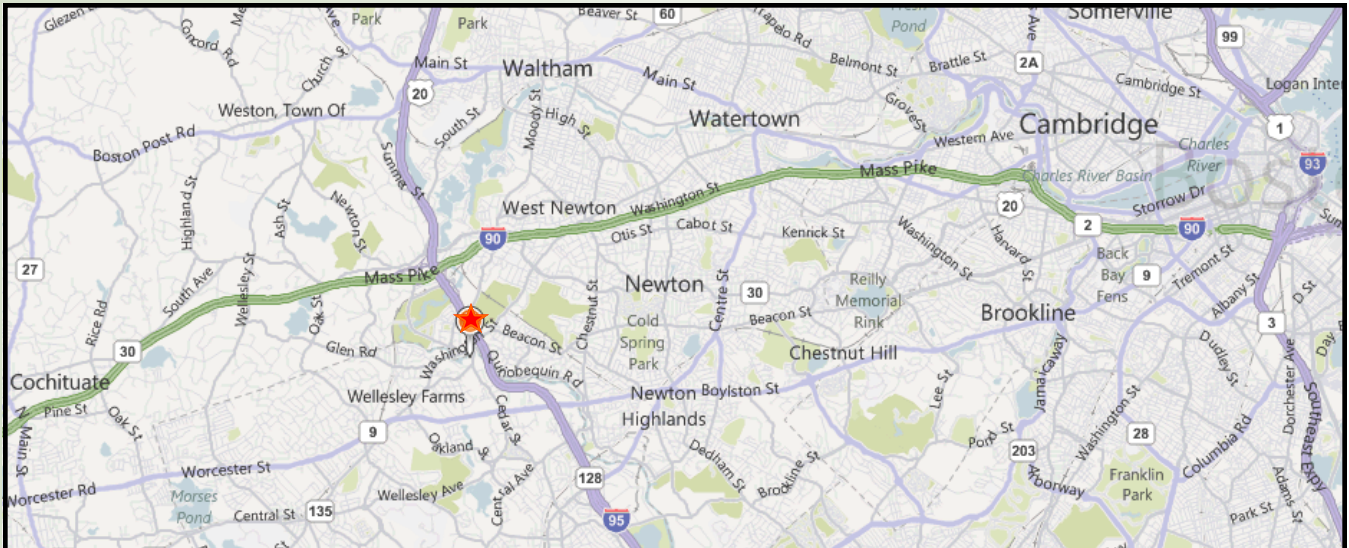
**781-235-4300**

[www.haynesmanagement.com](http://www.haynesmanagement.com)



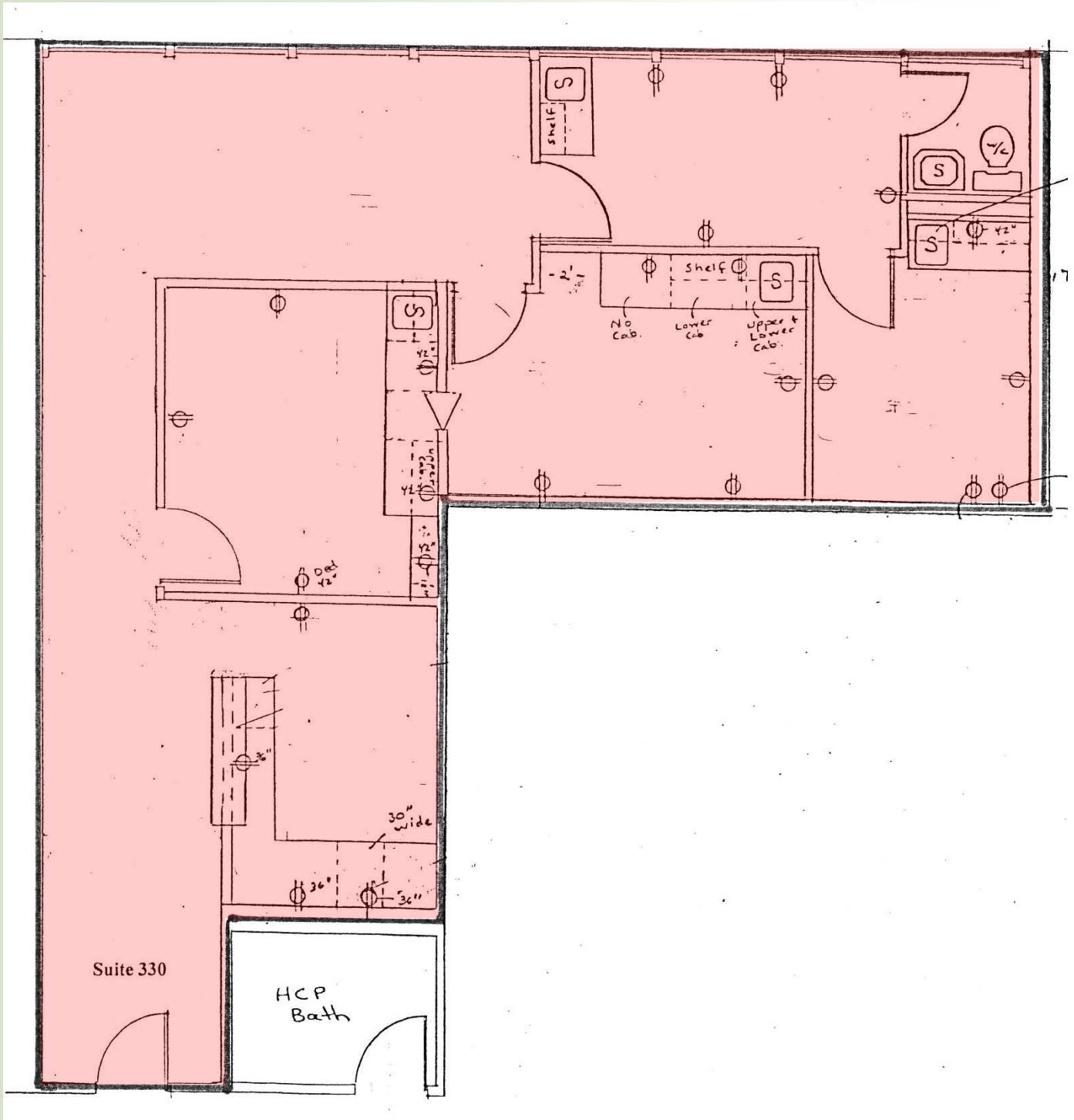
# MEDICAL/OFFICE SUITE AVAILABLE: 1,167 R.S.F

65 Walnut Street, Wellesley Hills, MA



For more information:  
**781-235-4300**  
[www.haynesmanagement.com](http://www.haynesmanagement.com)

**OFFICE/MEDICAL SUITE AVAILABLE:  
1,167 R.S.F**



**For more information:  
781-235-4300  
[www.haynesmanagement.com](http://www.haynesmanagement.com)**