

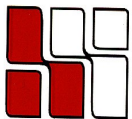
42 WASHINGTON STREET

Wellesley Hills, MA



**LOCATED JUST WEST OF THE
JUNCTION OF RTE. 16 & 128**

**MANY AMENITIES WITHIN WALKING DISTANCE;
SUCH AS: BANKS, HEALTH CLUB, RESTAURANTS,
POST OFFICE AND MORE.**

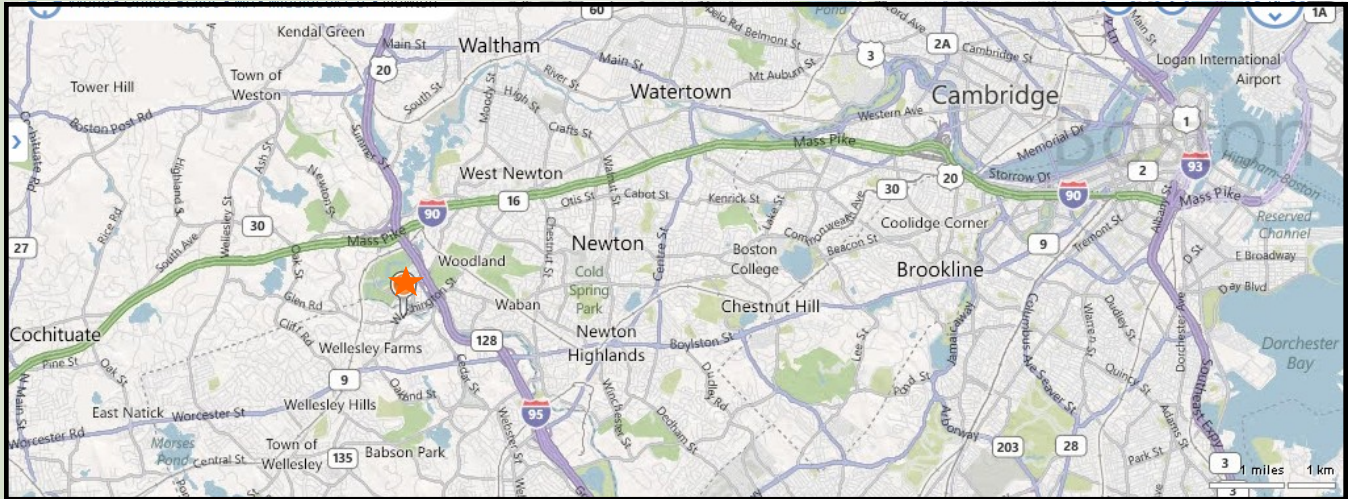


**HAYNES
MANAGEMENT, INC.**

781-235-4300

www.haynesmanagement.com

OFFICE SUITE AVAILABLE: 2,500 RSF—Subdividable



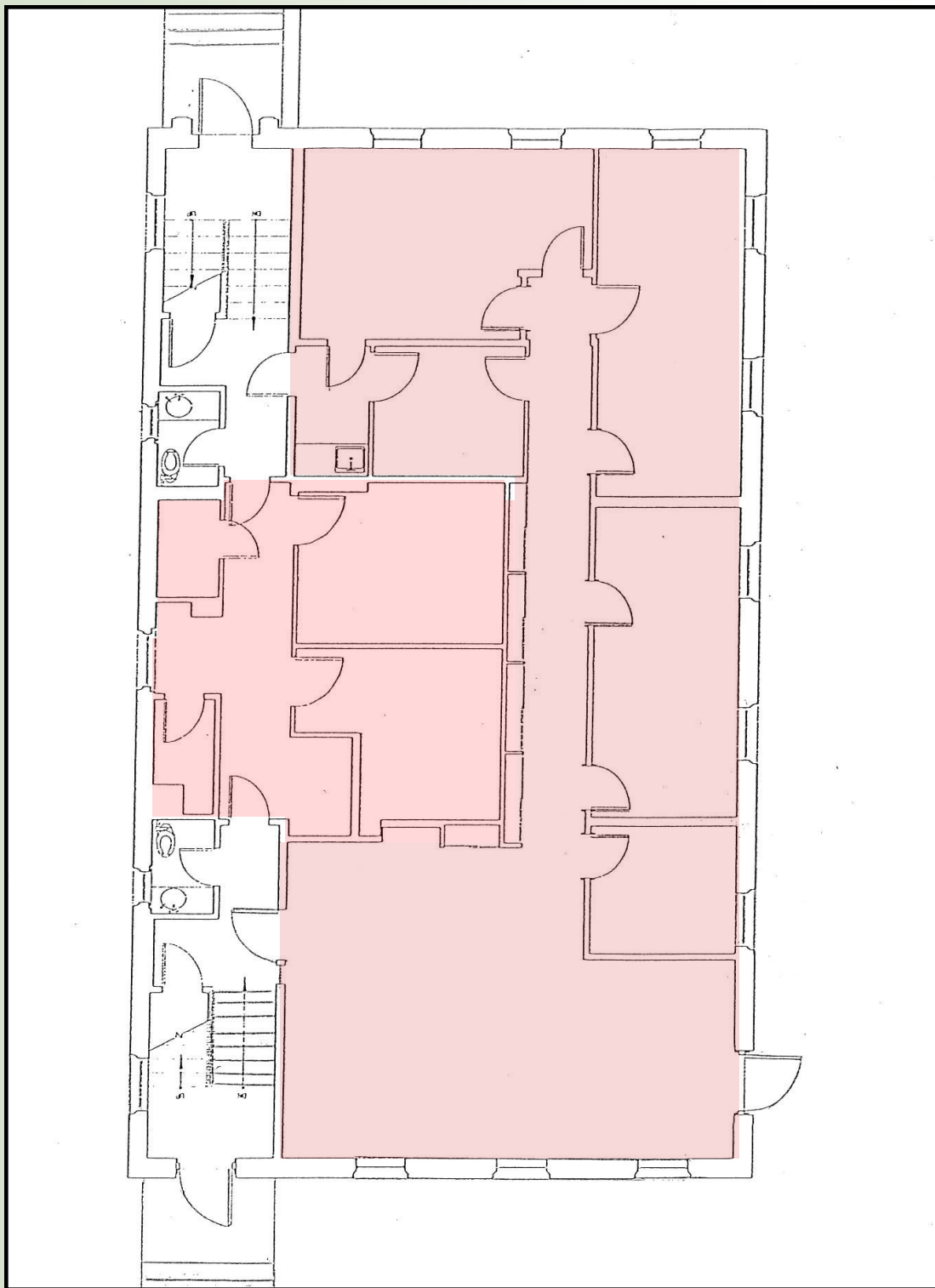
40 Washington Street is a three story, multi-tenant office building which is strategically situated near the junction of Route 16 and 128, providing quick and easy access to all major highways west of Boston.

Locally based Landlord with 35 years experience, that offers quality customer service.

**For more information:
781-235-4300
www.haynesmanagement.com**



**OFFICE SUITE AVAILABLE:
2,500 RSF—Subdividable**



**For more information:
781-235-4300
www.haynesmanagement.com**