



**40 WASHINGTON STREET**

**Wellesley Hills, MA**



**OFFICE SUITES  
AVAILABLE:**

**604 - 2,760 RSF**

**LOCATED JUST WEST OF THE  
JUNCTION OF RTE. 16 & 128**

**MANY AMENITIES WITHIN  
WALKING DISTANCE;  
SUCH AS: BANKS, HEALTH  
CLUB, RESTAURANTS,  
POST OFFICE AND MORE.**



**HAYNES  
MANAGEMENT, INC.**

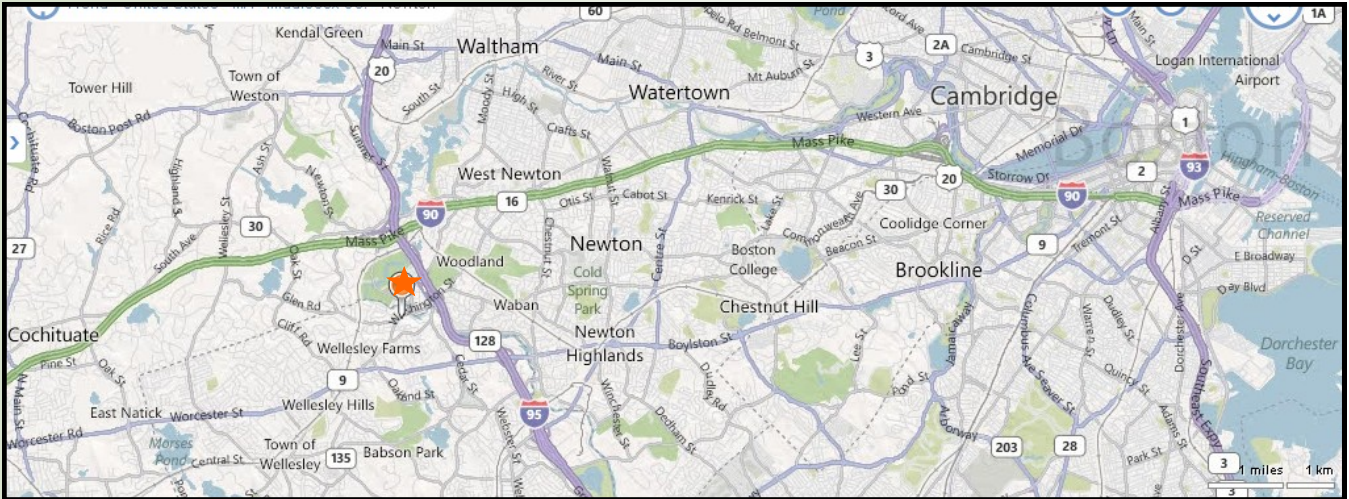
**781-235-4300**

[www.haynesmanagement.com](http://www.haynesmanagement.com)

All information furnished regarding this property is from sources deemed reliable and is submitted subject to errors, omissions, modifications and withdrawals without notice. No warranty or representation is made as to the accuracy of any information contained herein.

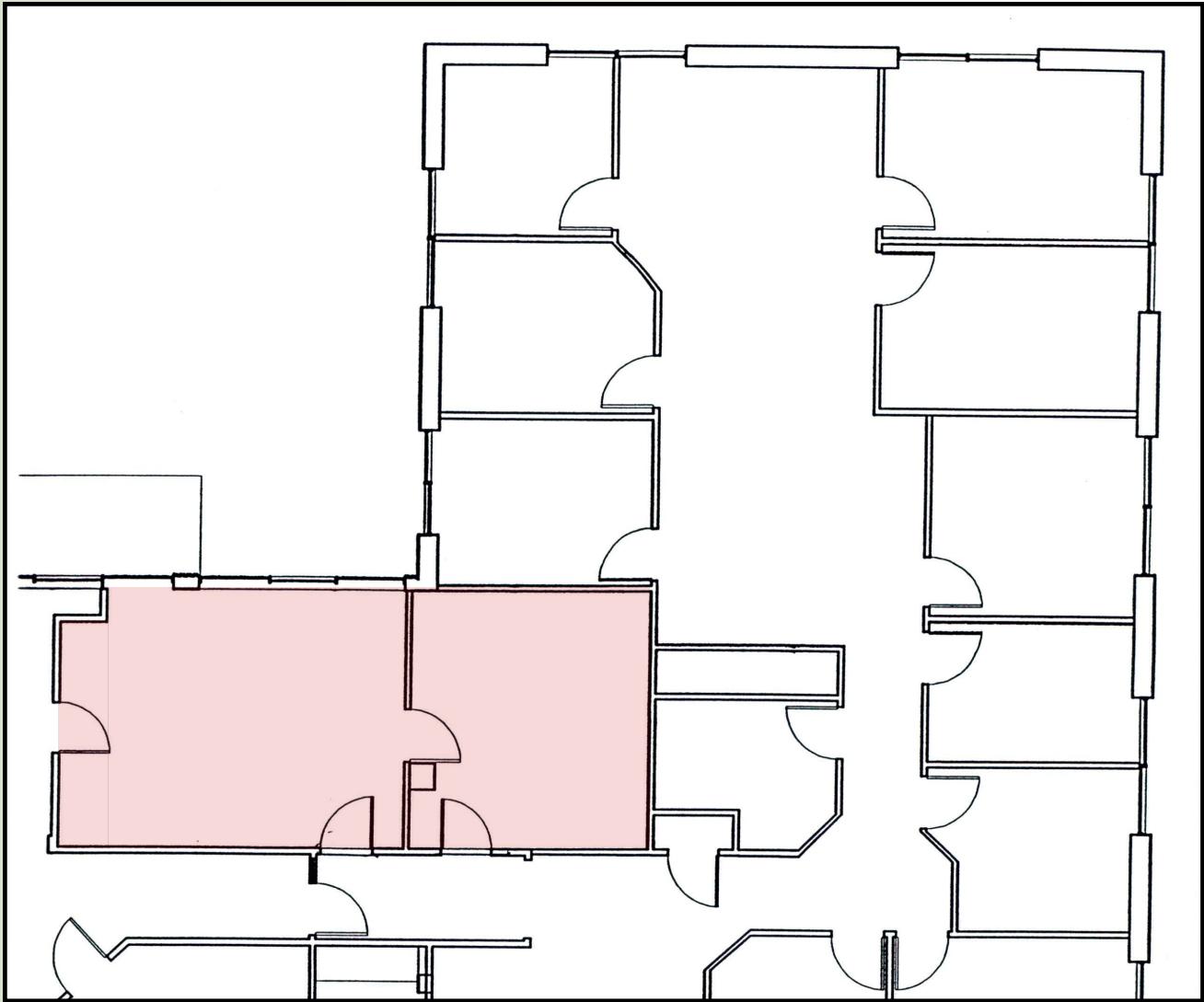


## OFFICE SUITE AVAILABLE: 604 - 2,760 RSF



For more information:  
**781-235-4300**  
[www.haynesmanagement.com](http://www.haynesmanagement.com)

**OFFICE SUITE AVAILABLE:  
604 R.S.F - Second Floor**



**40 Washington Street is a three story, multi-tenant office building which is strategically situated near the junction of Route 16 and 128, providing quick and easy access to all major highways west of Boston.**

**Locally based Landlord with 35 years experience, that offers quality customer service.**

**For more information:  
781-235-4300  
[www.haynesmanagement.com](http://www.haynesmanagement.com)**