

40 WASHINGTON STREET

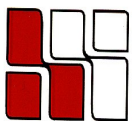
Wellesley Hills, MA



**1,954 RSF
on the
Second Floor**

**LOCATED JUST WEST OF THE
JUNCTION OF RTE. 16 & 128**

**MANY AMENITIES WITHIN
WALKING DISTANCE;
SUCH AS: BANKS, HEALTH
CLUB, RESTAURANTS,
POST OFFICE AND MORE.**

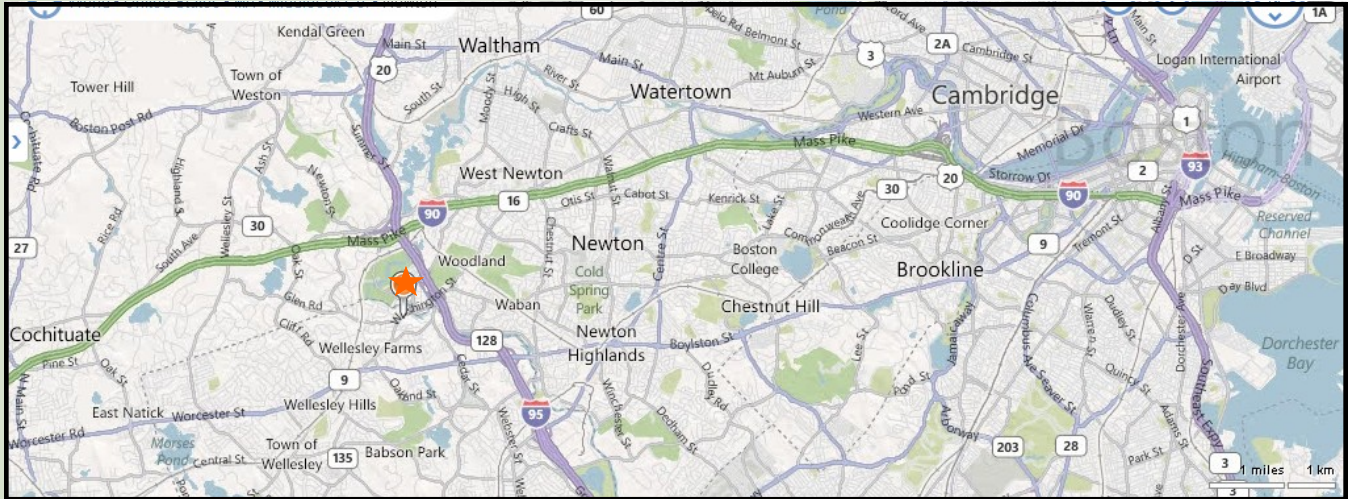


**HAYNES
MANAGEMENT, INC.**

781-235-4300

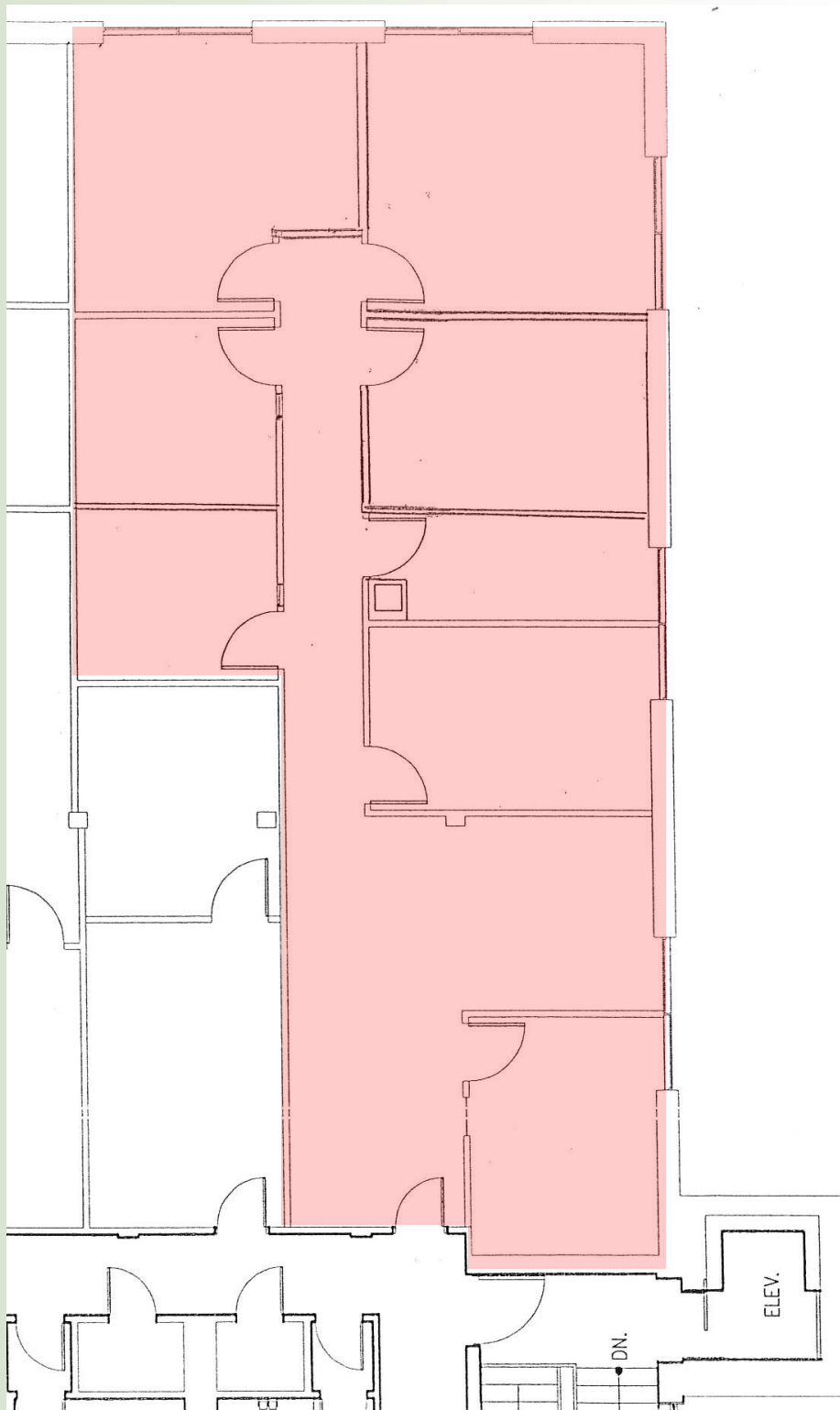
www.haynesmanagement.com

OFFICE SUITE AVAILABLE: 1,954 RSF



For more information:
781-235-4300
www.haynesmanagement.com

**OFFICE SUITE AVAILABLE:
1,954 r.s.f.**



**For more information:
781-235-4300
www.haynesmanagement.com**