

**37 WALNUT STREET**  
Wellesley Hills, MA

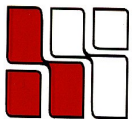


**Currently Available:**

**1,962 RSF**

**37 Walnut Street is a completely renovated historic stone mill building set overlooking the Charles River on the Wellesley/Newton town line.**

**Strategically situated at the junction of Routes 16 and 128, providing quick and easy access to and from all major highways west of Boston.**

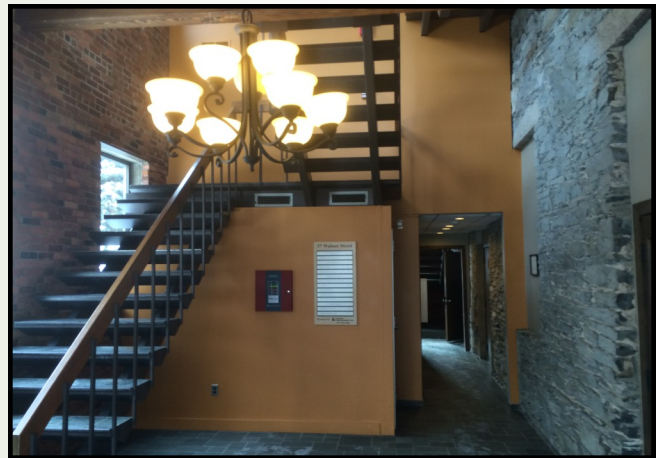
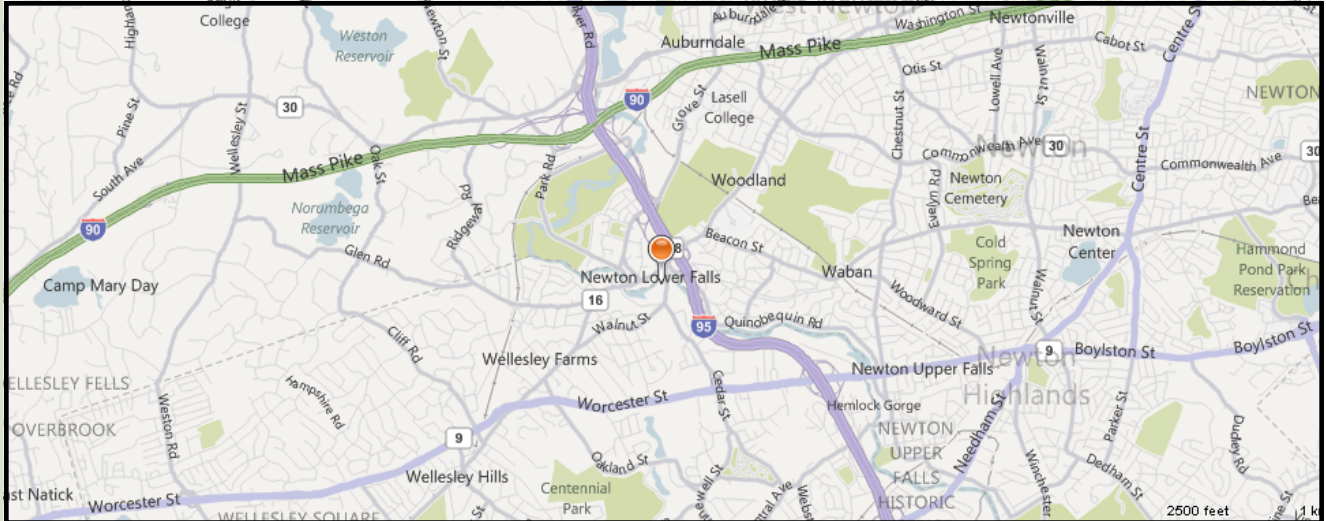


**HAYNES MANAGEMENT**

**781-235-4300**



## OFFICE SUITE AVAILABLE: 1,962 RSF



For more information:  
**781-235-4300**  
[www.haynesmanagement.com](http://www.haynesmanagement.com)

