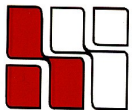


34 WASHINGTON STREET

Wellesley Hills, MA



**LOCATED BY THE JUNCTION OF
RTE. 16 & 128
MANY AMENITIES WITHIN WALKING DISTANCE
RESTAURANTS, BANKS, HEALTH CLUB, POST OFFICE
AMPLE PARKING
ATTRACTIVE SUBURBAN SETTING**



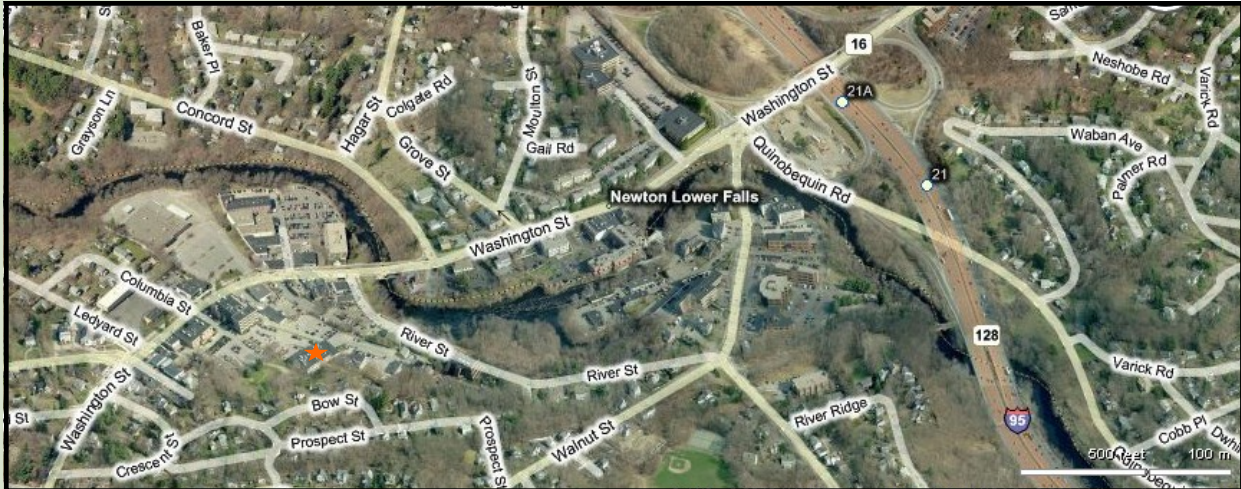
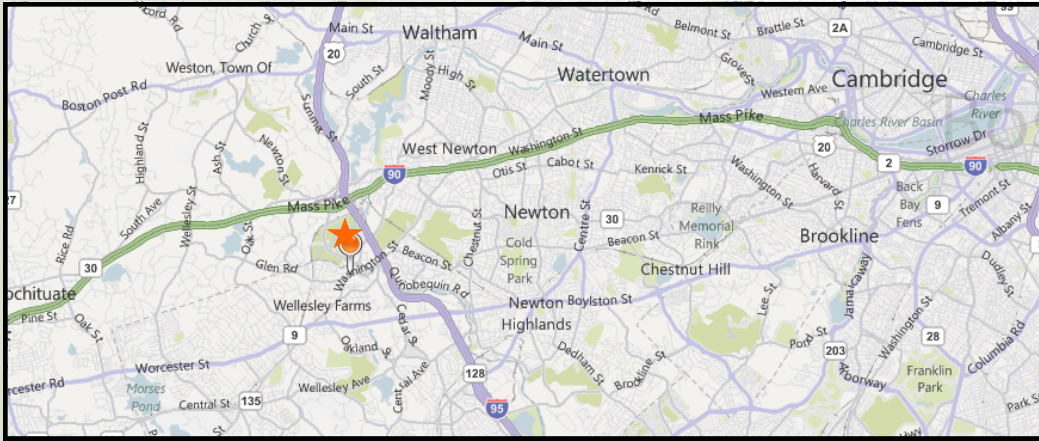
**HAYNES
MANAGEMENT, INC.**

781-235-4300

www.haynesmanagement.com

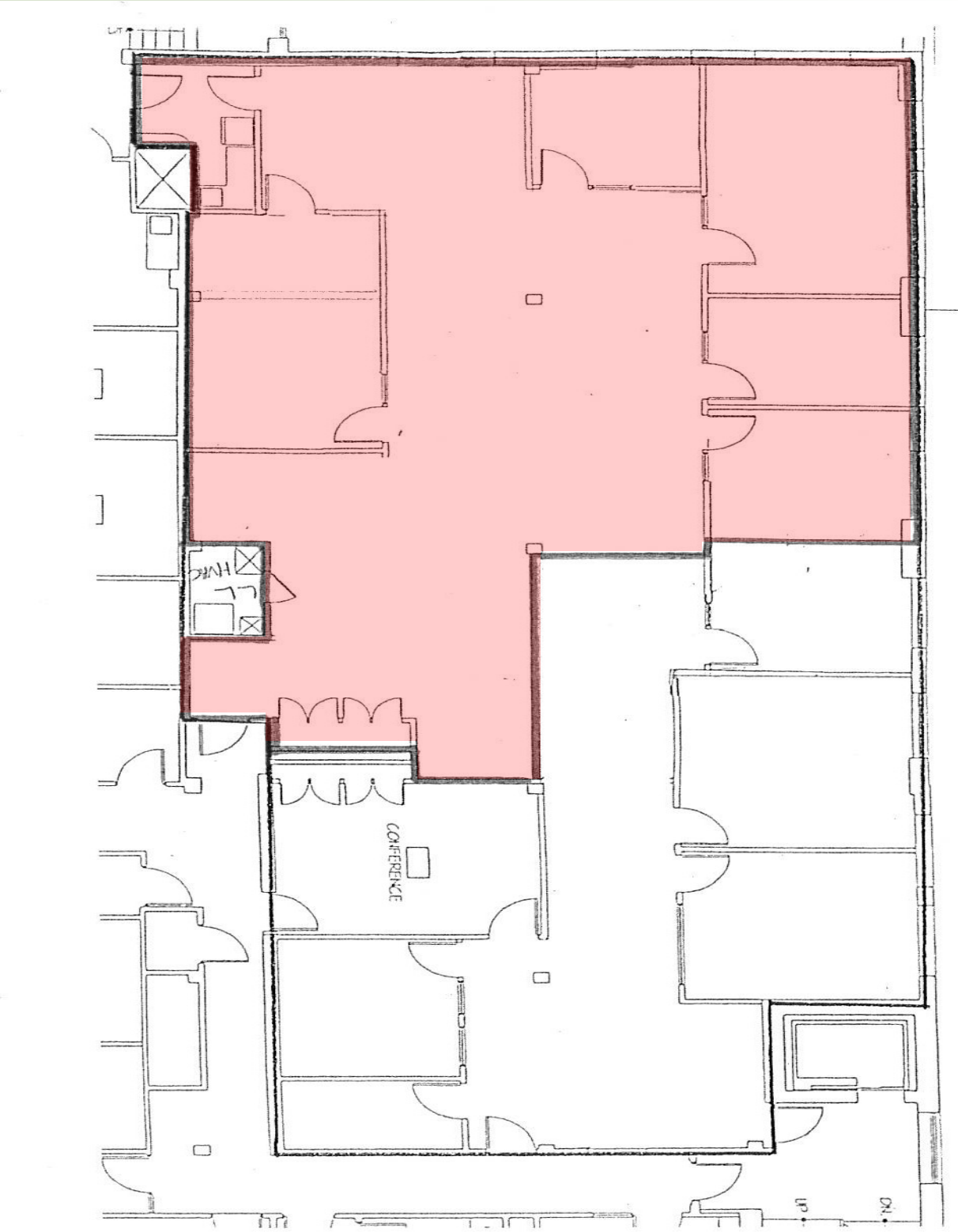
All information furnished regarding this property is from sources deemed reliable and is submitted subject to errors, omissions, modifications and withdrawals without notice. No warranty or representation is made as to the accuracy of any information contained herein.

34 WASHINGTON STREET Wellesley Hills, MA



**For more information:
781-235-4300
www.haynesmanagement.com**

**OFFICE SUITE AVAILABLE:
2,703 R.S.F**



**For more information:
781-235-4300
www.haynesmanagement.com**