

20 WALNUT STREET

Wellesley Hills, MA



**LOCATED BY THE JUNCTION OF
RTE. 16 & 128
OVERLOOKING THE CHARLES RIVER**

**MANY AMENITIES WITHIN
WALKING DISTANCE;
SUCH AS: BANKS, HEALTH CLUB,
RESTAURANTS, POST OFFICE
AND MORE.**



**HAYNES
MANAGEMENT, INC.**

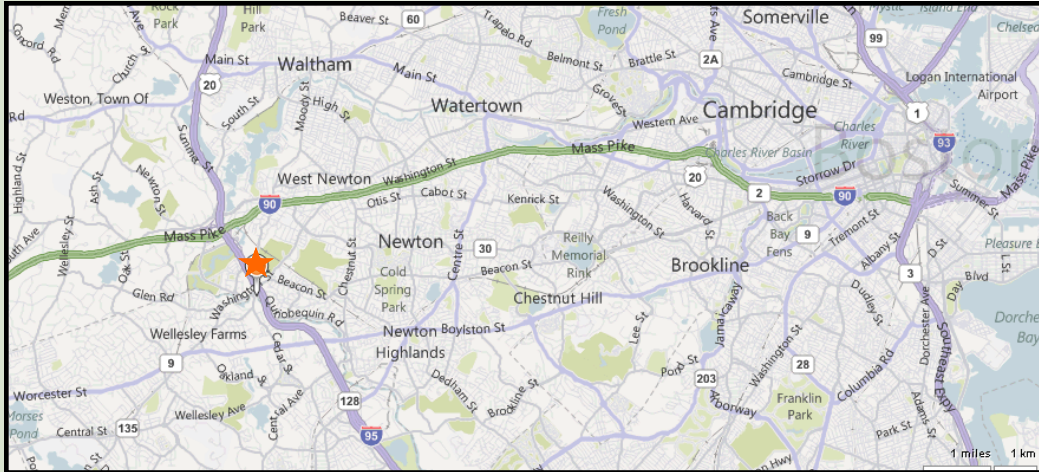
781-235-4300

www.haynesmanagement.com

All information furnished regarding this property is from sources deemed reliable and is submitted subject to errors, omissions, modifications and withdrawals without notice. No warranty or representation is made as to the accuracy of any information contained herein.



OFFICE SUITE AVAILABLE: 3,364 R.S.F (Subdivision) - Third Floor



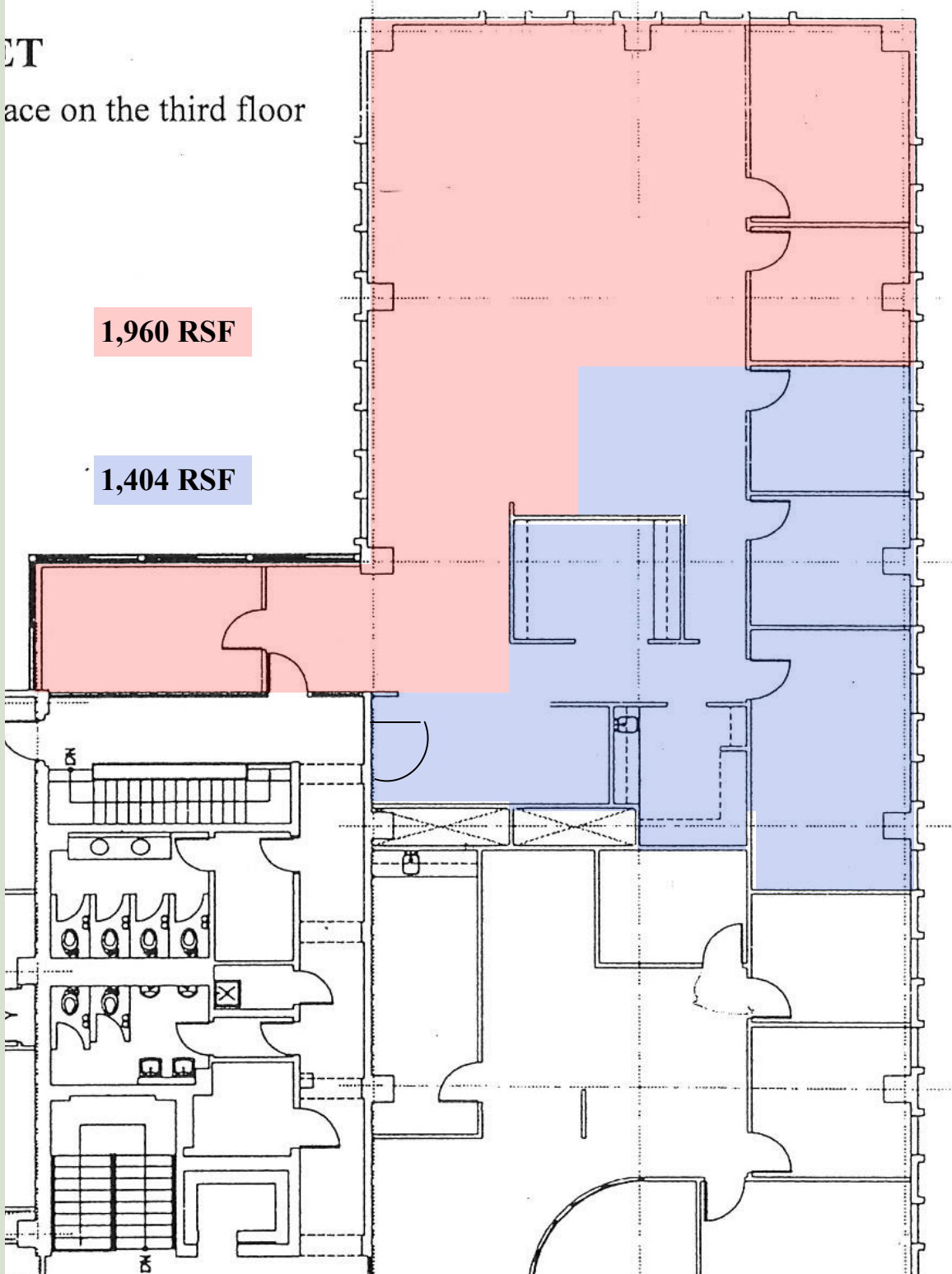
For more information:
781-235-4300
www.haynesmanagement.com

OFFICE SUITE AVAILABLE: 3,364 R.S.F (Subdivision) - Third Floor

ET
ace on the third floor

1,960 RSF

1,404 RSF



For more information:
781-235-4300
www.haynesmanagement.com