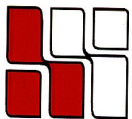


20 WALNUT STREET

Wellesley Hills, MA



**LOCATED BY THE JUNCTION OF
RTE. 16 & 128
OVERLOOKING THE CHARLES RIVER**



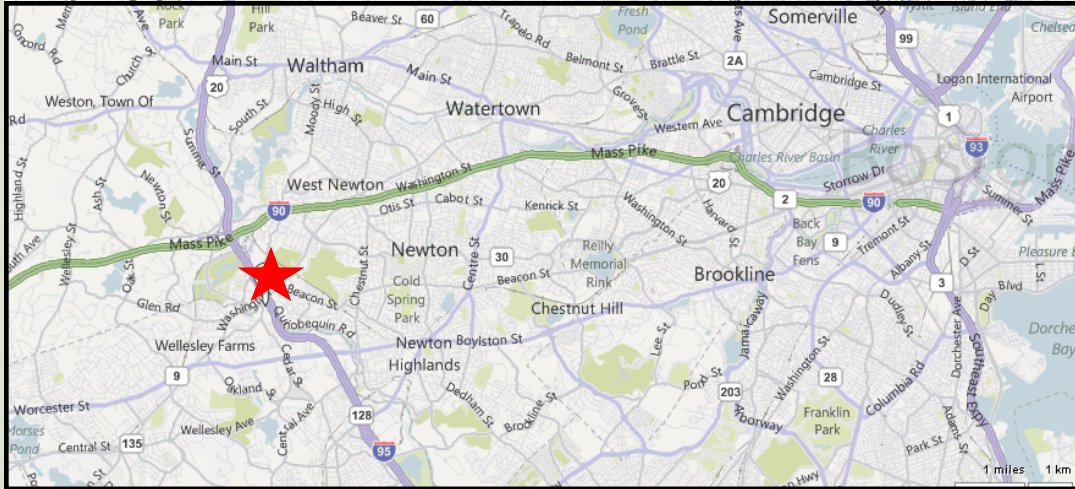
**HAYNES
MANAGEMENT, INC.**

781-235-4300

www.haynesmanagement.com

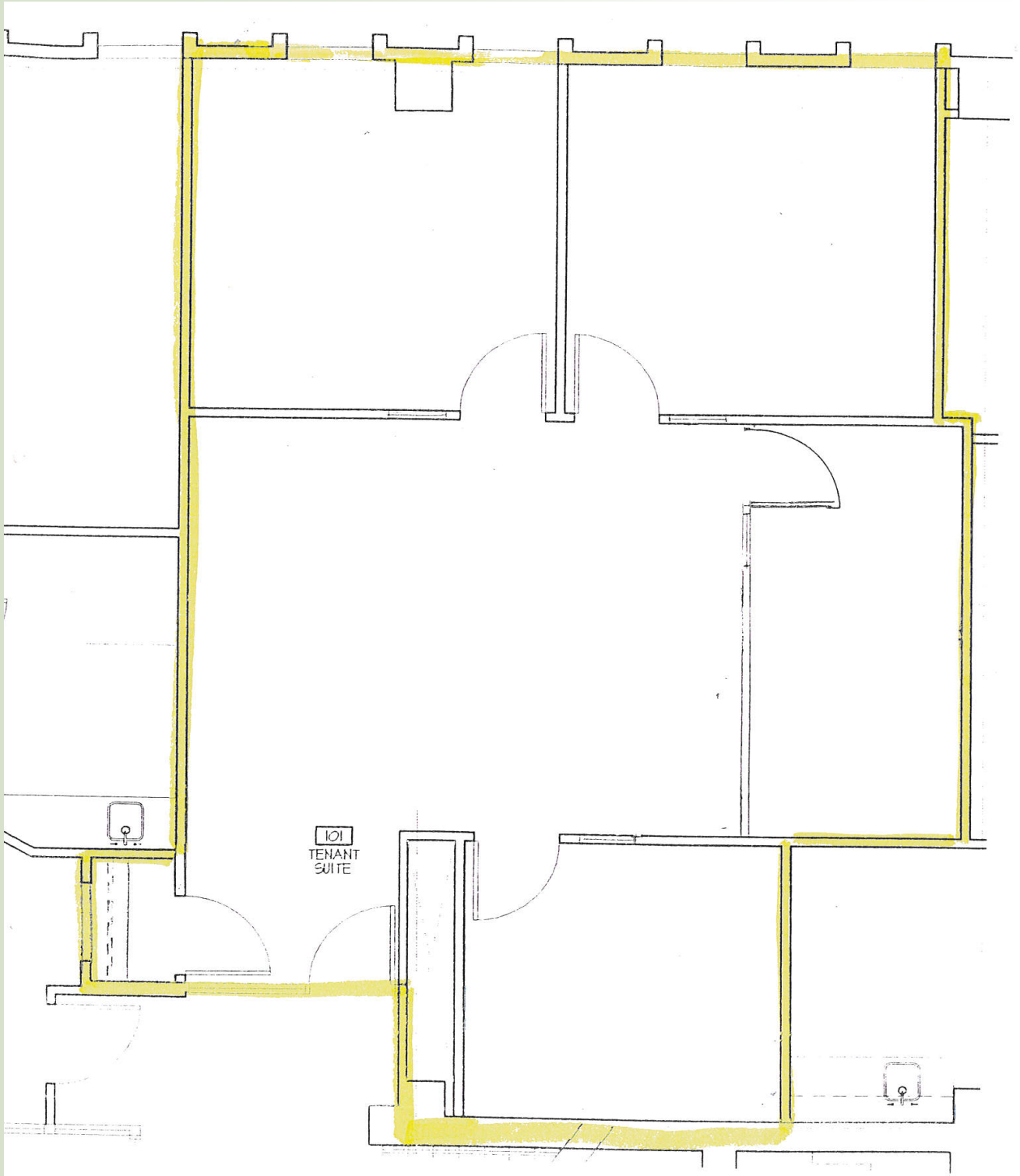
All information furnished regarding this property is from sources deemed reliable and is submitted subject to errors, omissions, modifications and withdrawals without notice. No warranty or representation is made as to the accuracy of any information contained herein.

OFFICE SUITE AVAILABLE: 1,220 R.S.F - First Floor



For more information:
781-235-4300
www.haynesmanagement.com

**OFFICE SUITE AVAILABLE:
1,220 R.S.F - First Floor**



**For more information:
781-235-4300
www.haynesmanagement.com**