



16 PRESCOTT STREET

Wellesley Hills, MA

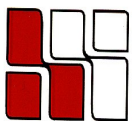


Currently Available:

1,100 or 297, 376, 437 RSF—Second Floor

**LOCATED IN THE HEART OF WELLESLEY HILLS
NEAR THE JUNCTION OF RT. 9 & RT. 16**

**MANY AMENITIES WITHIN WALKING DISTANCE:
BANKS, RESTAURANTS, POST OFFICE, TRAIN STATION AND MORE**



**HAYNES
MANAGEMENT, INC.**

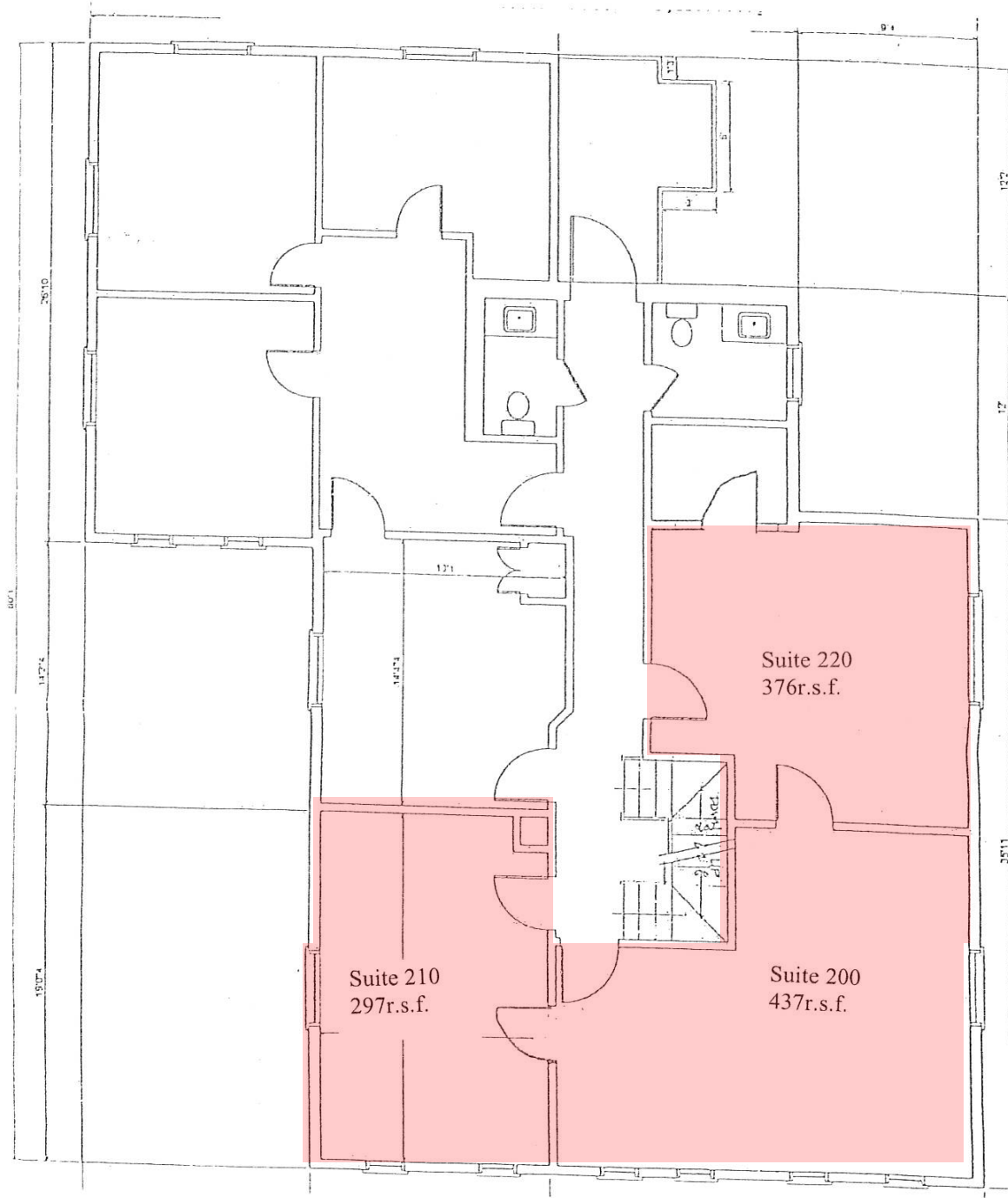
781-235-4300

www.haynesmanagement.com

All information furnished regarding this property is from sources deemed reliable and is submitted subject to errors, omissions, modifications and withdrawals without notice. No warranty or representation is made as to the accuracy of any information contained herein.

16 Prescott Street, Wellesley Hills, MA
1,110 R.S.F

16 Prescott Street - Second Floor - 1,110r.s.f.



For more information:
781-235-4300
www.haynesmanagement.com