

15 WALNUT STREET

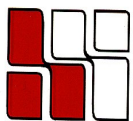
Wellesley Hills, MA



5,150 R.S.F on SECOND FLOOR

**LOCATED BY THE JUNCTION OF
RTE. 16 & 128
OVERLOOKING THE CHARLES RIVER**

**MANY AMENITIES WITHIN
WALKING DISTANCE;
SUCH AS: BANKS, HEALTH CLUB,
RESTAURANTS, POST OFFICE**

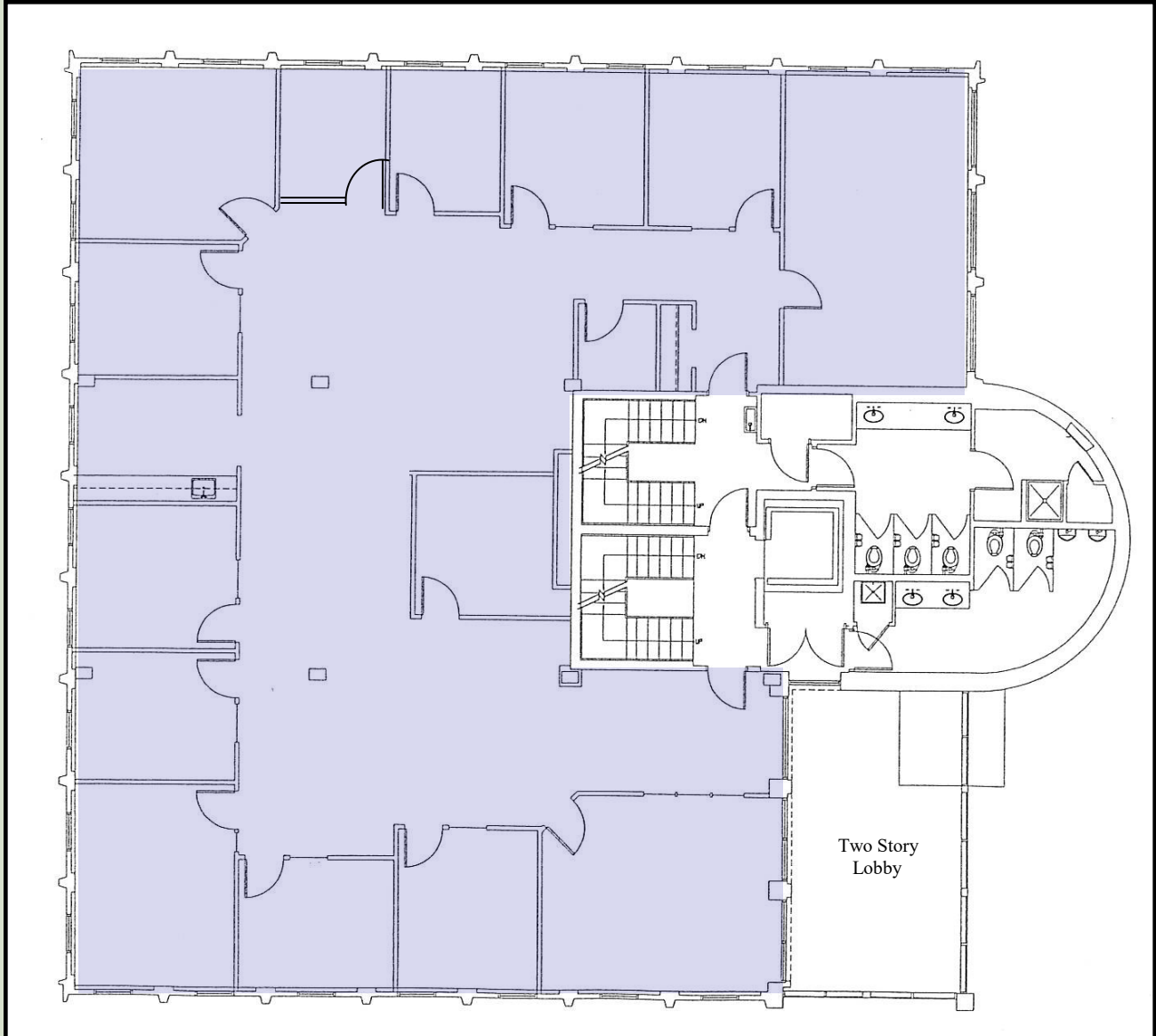


**HAYNES
MANAGEMENT, INC.**

781-235-4300

www.haynesmanagement.com

**OFFICE SUITE AVAILABLE:
5,150 SF**



**Excellent location provides quick and easy access
to and from all major highways west of
Boston for employees and visitors.**

**For more information:
781-235-4300
www.haynesmanagement.com**