



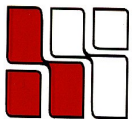
110 CEDAR STREET
Wellesley Hills, MA



Currently Available

2,451 R.S.F.

- Great Location - Great Value - Easily Accessible -



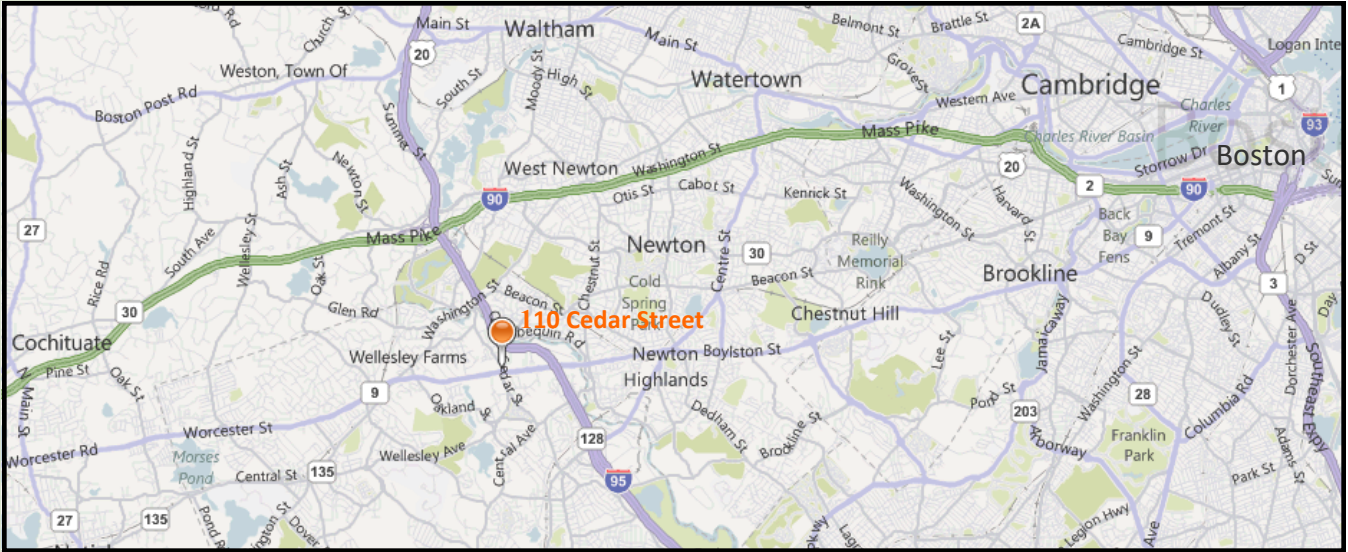
**HAYNES
MANAGEMENT, INC.**

781-235-4300

www.haynesmanagement.com

All information furnished regarding this property is from sources deemed reliable and is submitted subject to errors, omissions, modifications and withdrawals without notice. No warranty or representation is made as to the accuracy of any information contained herein.

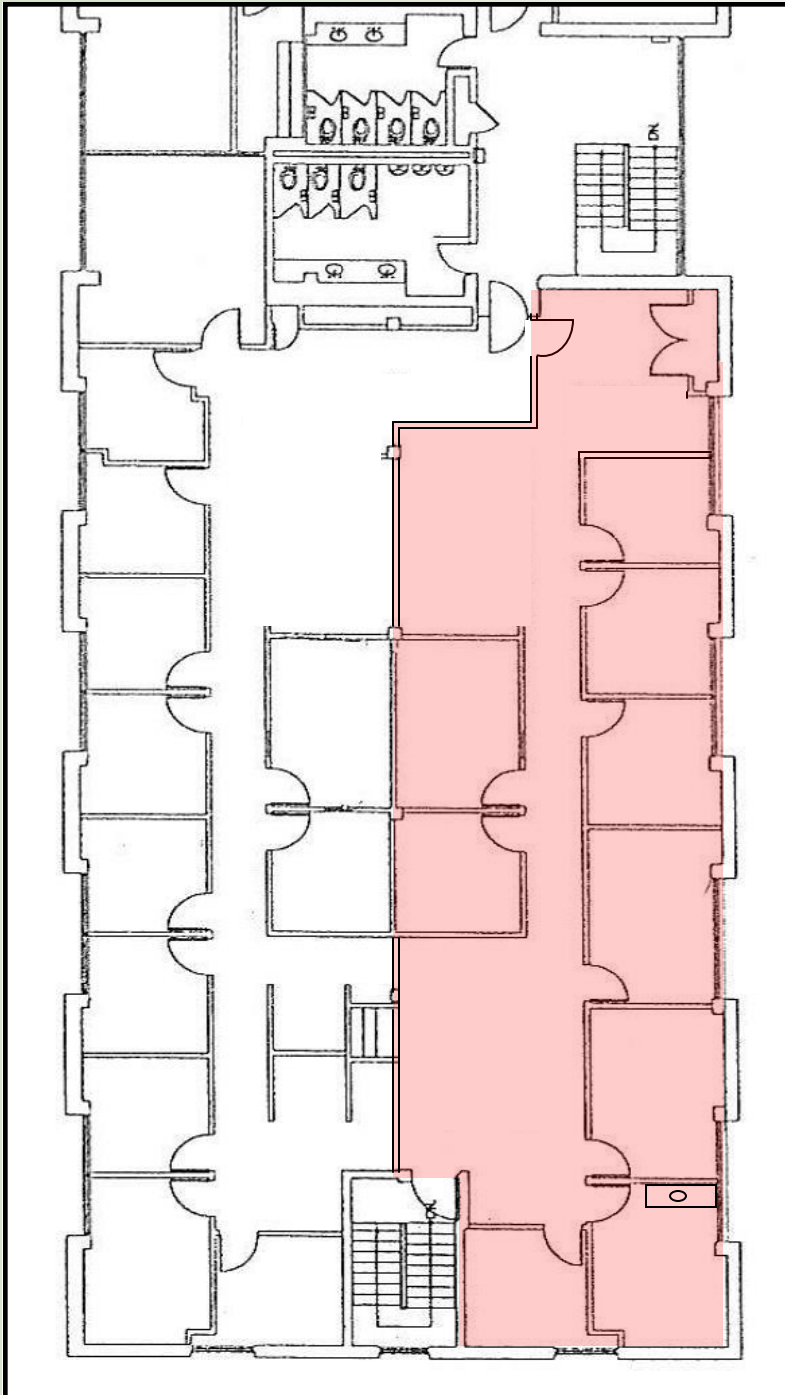
**OFFICE SUITE AVAILABLE:
2,451 R.S.F.**



- Large Windows
- Well Designed Build-out
- Moments to Route 128 & Route 9
- Ample Parking
- Attractive Lease Rates
- Quality Office Space



**For more information:
781-235-4300
www.haynesmanagement.com**



110 Cedar Street is located moments from Route 128 off Route 9. This prime location is within easy travel range to the Mass Pike and Boston.

This suite is an attractive opportunity for a value minded tenant who requires a central Route 128 location in an uncongested area.