

**ECHO BRIDGE OFFICE PARK**

**375 - 395 ELLIOT STREET  
NEWTON UPPER FALLS, MA**



**AVAILABLE SUITE—2,336 RSF**



This renovated historic mill building is strategically located in the southeast corner of the intersection of Rte. 9 and Rte. 128 (I-95), overlooking the Charles River, by the Newton/Wellesley town line. It offers attractive office space in a prime location at reasonable rates.

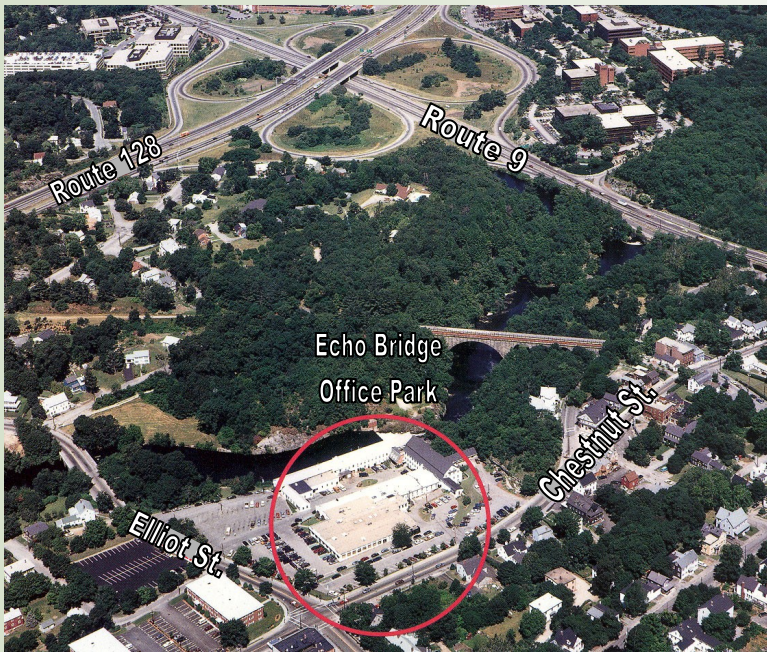


**HAYNES  
MANAGEMENT, INC.**  
*The Suburban Office Experts*

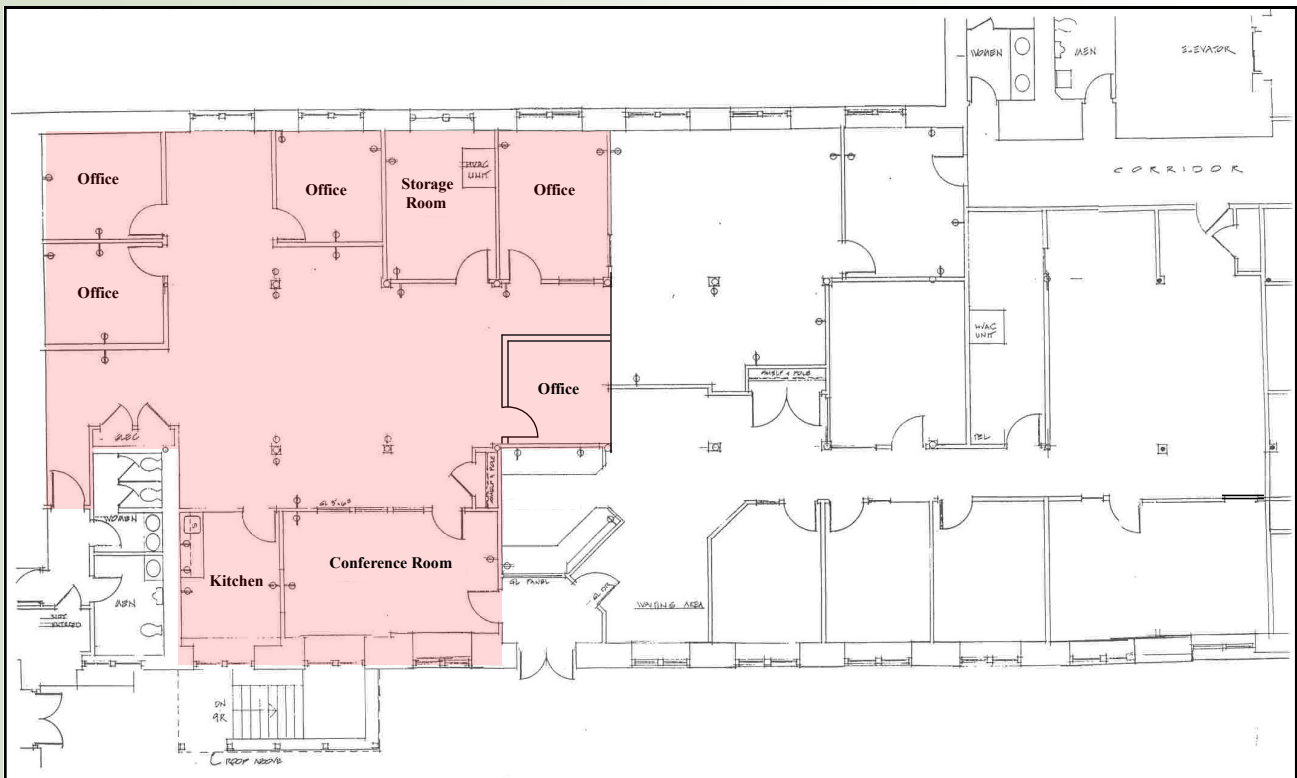
Phone: 781-235-4300

Fax: 781-237-1408

E- Mail: [info@haynesmanagement.com](mailto:info@haynesmanagement.com)



- Office Park Overlooks Charles River
- Centrally Located
- Locally based Landlord with 60 years experience, that offers quality customer service.
- Unique office setting that makes for a pleasant working environment.
- Abundant parking
- Quick and easy access to



**For more information:**

**781-235-4300**

[www.haynesmanagement.com](http://www.haynesmanagement.com)