

## **ECHO BRIDGE OFFICE PARK**

**375 - 395 ELLIOT STREET  
NEWTON UPPER FALLS, MA**

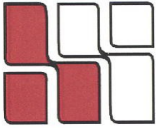


**Attractive &  
unique  
office setting ,  
in a  
prime location**

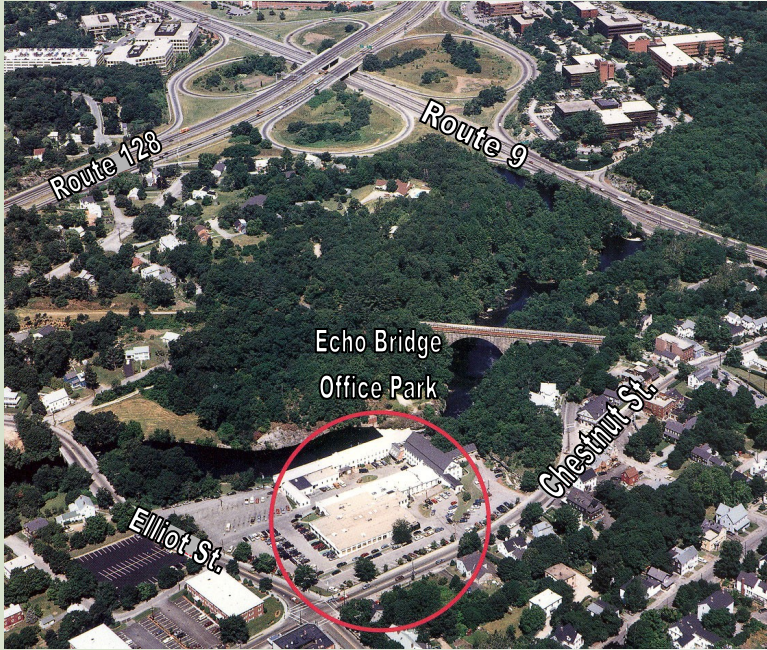


This renovated historic mill building is strategically located in the southeast corner of the intersection of Rte. 9 and Rte. 128 (I-95), overlooking the Charles River, by the Newton/Wellesley town line. It offers attractive office space in a prime location at reasonable rates.

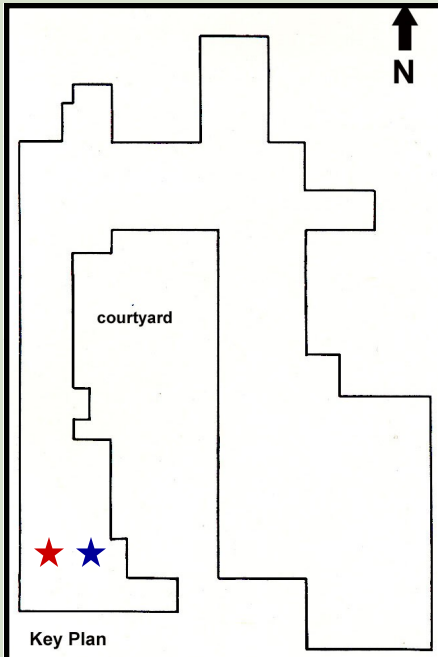




## Echo Bridge Office Park, Newton Upper Falls, MA

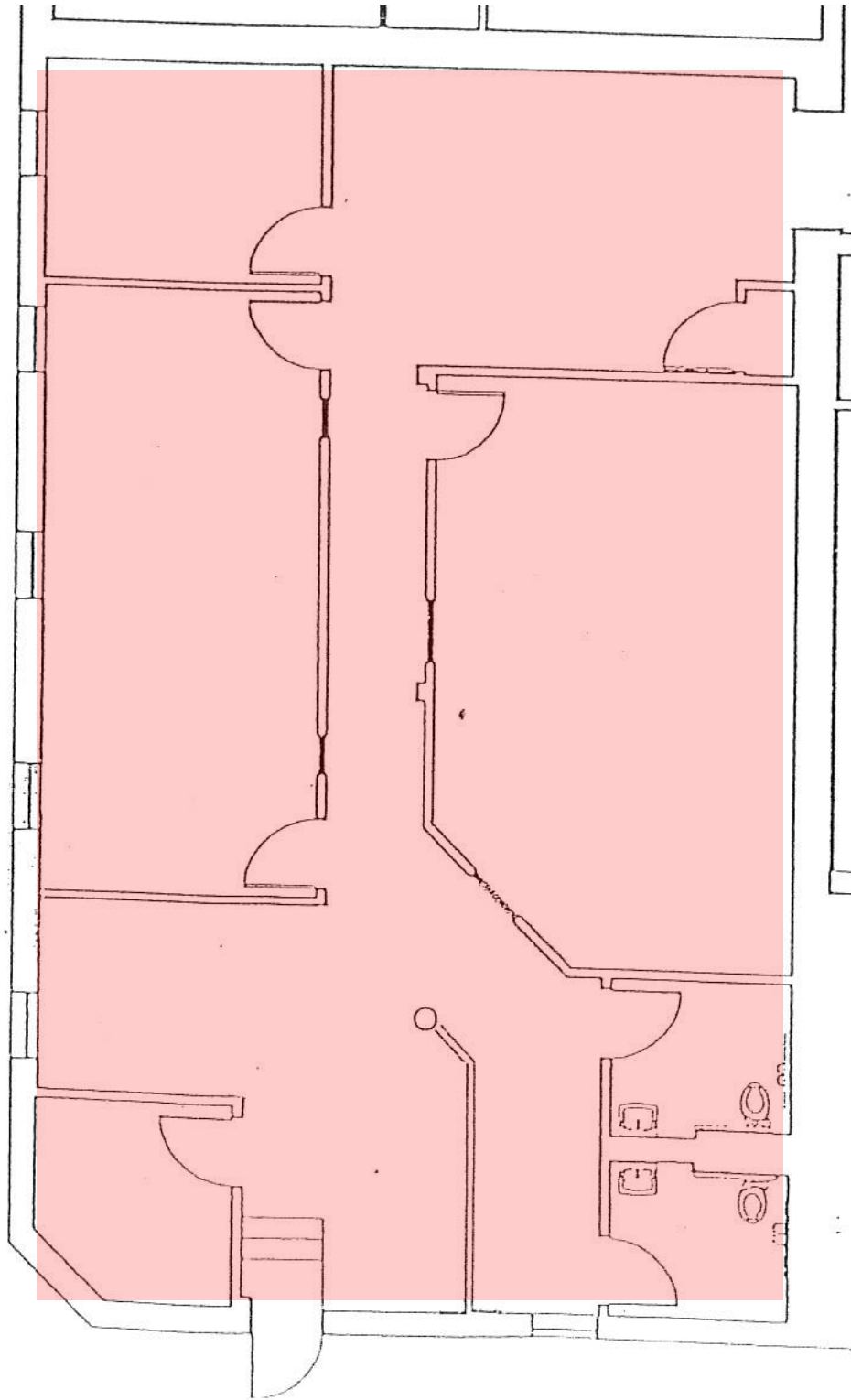


- Office Park Overlooks Charles River
- Centrally Located
- Locally based Landlord with 35 years experience, that offers quality customer service.
- Unique office setting that makes for a pleasant working environment.
- Abundant parking
- Quick and easy access to Rte. 128 & the Mass Pike



**For more information:**  
**781-235-4300**  
[www.haynesmanagement.com](http://www.haynesmanagement.com)

# Echo Bridge Office Park 1,933 SF - First Floor



For more information:  
**781-235-4300**  
[www.haynesmanagement.com](http://www.haynesmanagement.com)