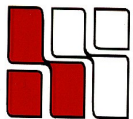


**65 WALNUT STREET
WELLESLEY**



Located less than a 1/4
a mile from
Newton-Wellesley Hospital

**MEDICAL OFFICE SPACE
Currently Available:
4,245 RSF**



**HAYNES
MANAGEMENT, INC.**

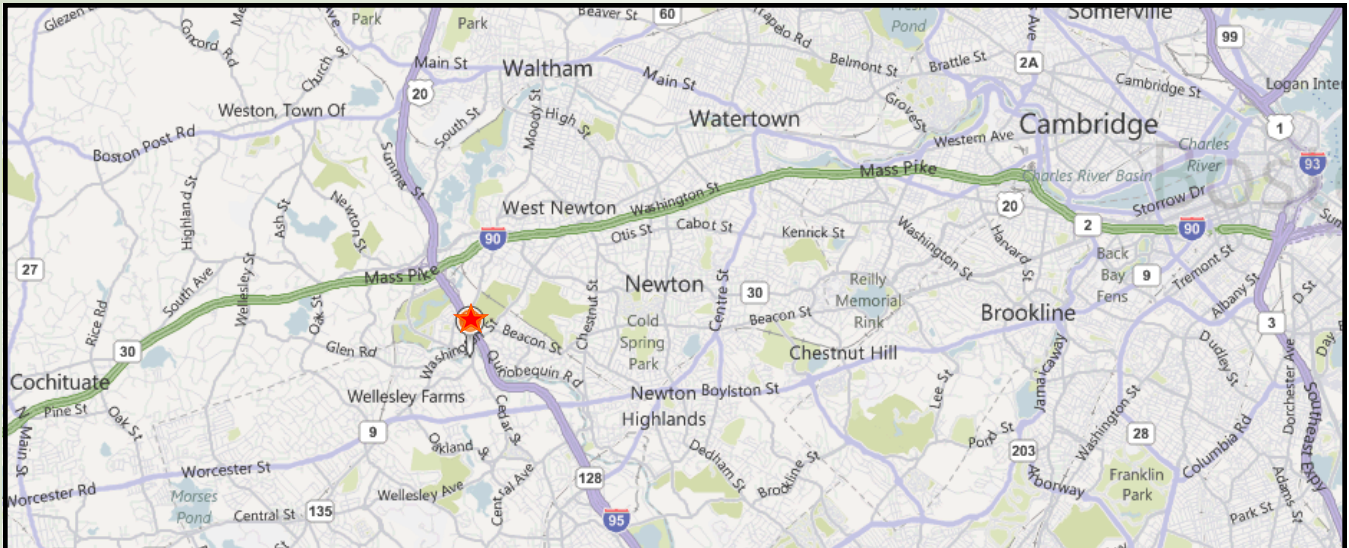
781-235-4300

www.haynesmanagement.com



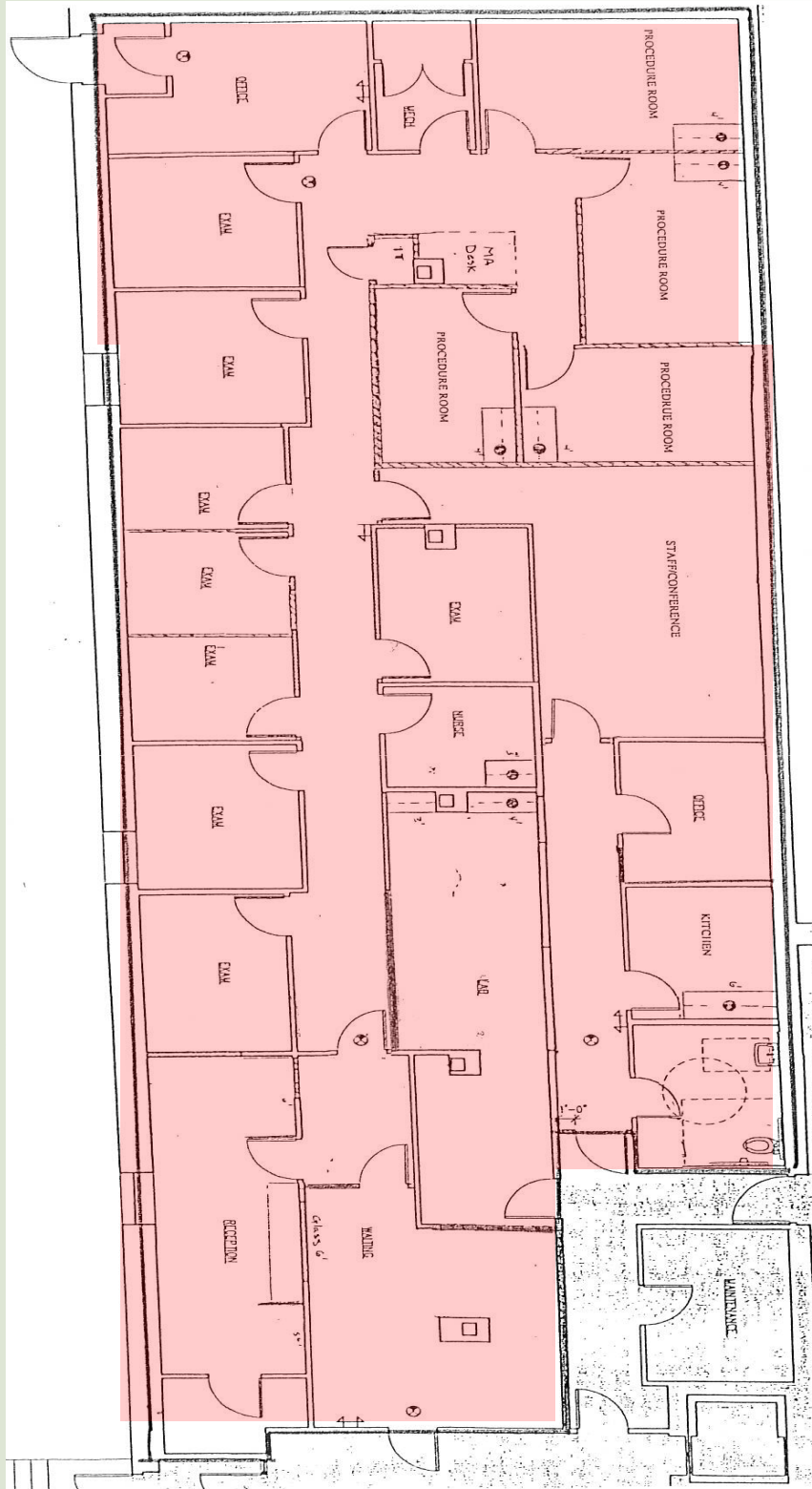
MEDICAL/OFFICE SUITE AVAILABLE: 4,245 R.S.F

65 Walnut Street, Wellesley Hills, MA



For more information:
781-235-4300
www.haynesmanagement.com

**OFFICE/MEDICAL SUITE AVAILABLE:
4,245 R.S.F.**



**For more information:
781-235-4300
www.haynesmanagement.com**