

49 WALNUT PARK

WELLESLEY HILLS, MA



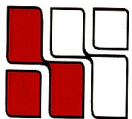
**Currently
Available:**

**Building #4
840-2,150 SF**

Direct Entrance - Great Rate - Excellent Location

49 Walnut Park #4 is part of a cluster of four small office buildings positioned on the banks of the Charles River.

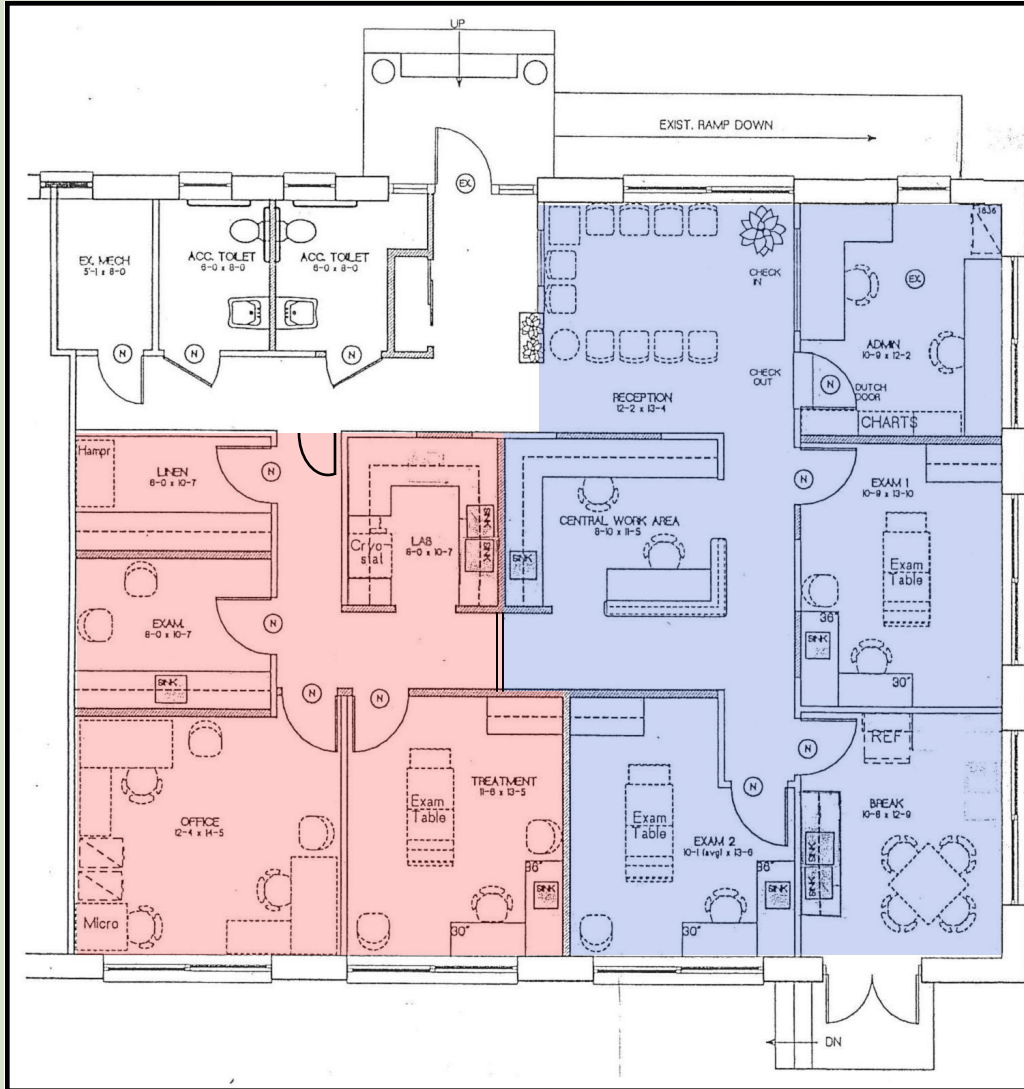
It is situated by the junction of Routes 16 and 128 on the Wellesley/Newton town line, just south of the intersection of the Mass Turnpike and Route 128.



**HAYNES
MANAGEMENT, INC.**

781-235-4300

www.haynesmanagement.com



= 840 RSF

= 1,310 RSF



**For more information:
781-235-4300
www.haynesmanagement.com**