

40 WASHINGTON STREET

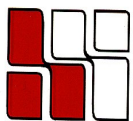
Wellesley Hills, MA



**3,955 RSF
on the
First Floor**

**LOCATED JUST WEST OF THE
JUNCTION OF RTE. 16 & 128**

**MANY AMENITIES WITHIN
WALKING DISTANCE;
SUCH AS: BANKS, HEALTH
CLUB, RESTAURANTS,
POST OFFICE AND MORE.**

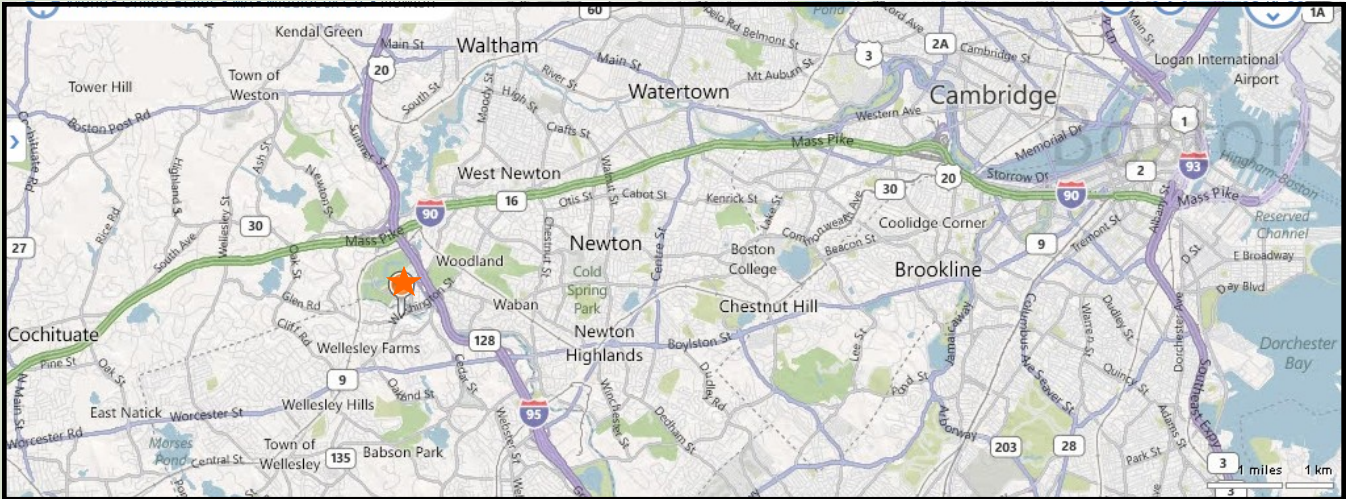


**HAYNES
MANAGEMENT, INC.**

781-235-4300

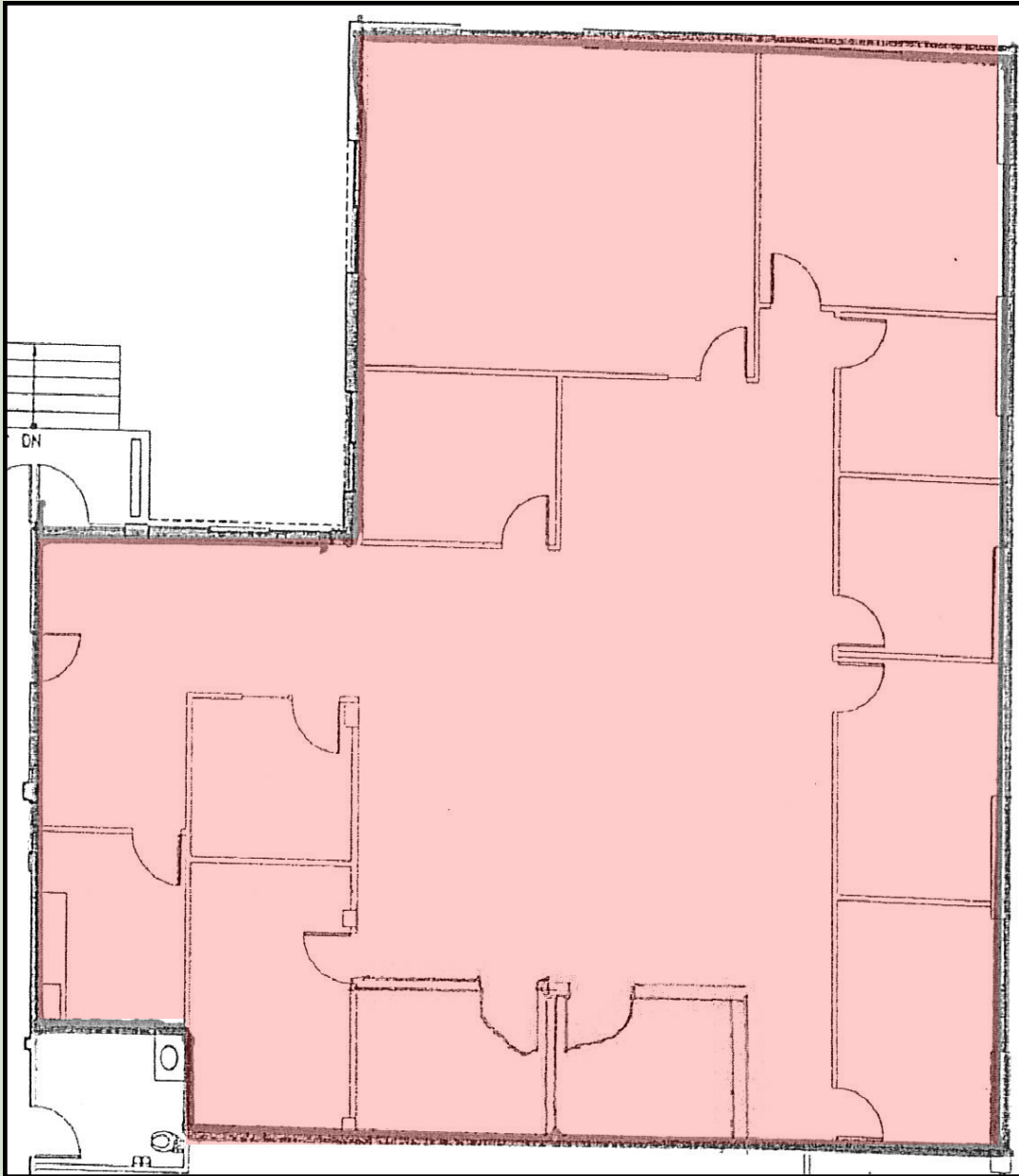
www.haynesmanagement.com

OFFICE SUITE AVAILABLE: 3,955 RSF



**For more information:
781-235-4300
www.haynesmanagement.com**

**OFFICE SUITE AVAILABLE:
3,955 r.s.f.**



40 Washington Street is a three story, multi-tenant office building which is strategically situated near the junction of Route 16 and 128, providing quick and easy access to all major highways west of Boston.

**Locally based Landlord with over 50 years experience,
that offers quality customer service.**

**For more information:
781-235-4300
www.haynesmanagement.com**