

# **40 WASHINGTON STREET**

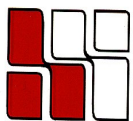
**Wellesley Hills, MA**



**1,932 RSF  
on the  
First Floor**

**LOCATED JUST WEST OF THE  
JUNCTION OF RTE. 16 & 128**

**MANY AMENITIES WITHIN  
WALKING DISTANCE;  
SUCH AS: BANKS, HEALTH  
CLUB, RESTAURANTS,  
POST OFFICE AND MORE.**



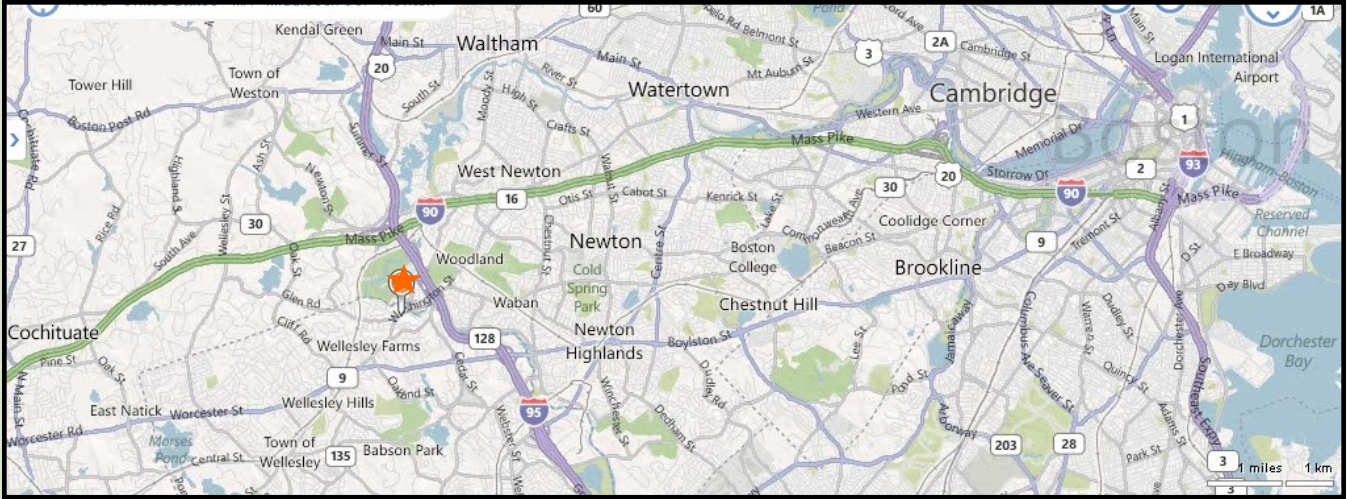
**HAYNES  
MANAGEMENT, INC.**

**781-235-4300**

[www.haynesmanagement.com](http://www.haynesmanagement.com)



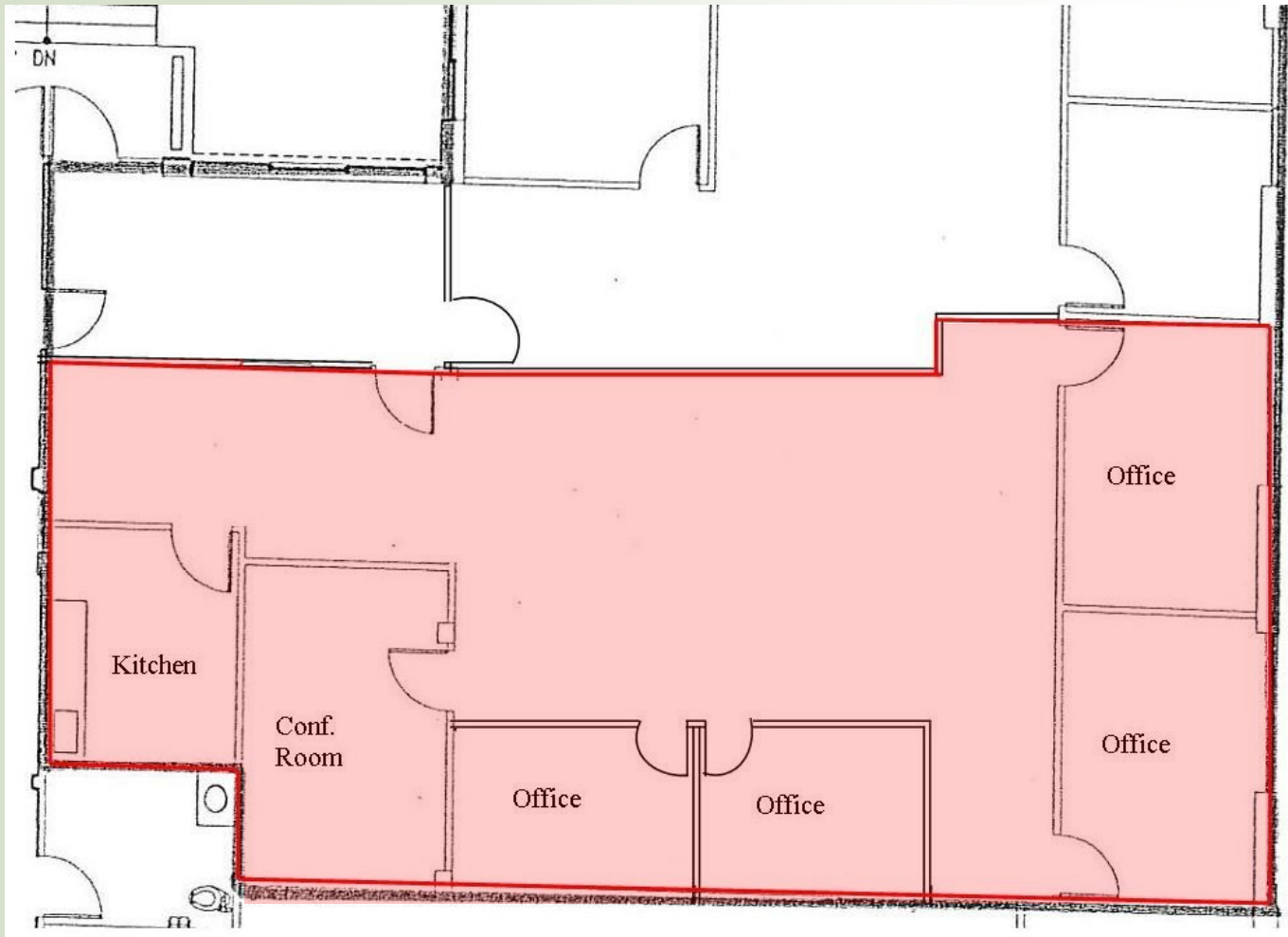
# OFFICE SUITE AVAILABLE: 1,932 RSF



For more information:  
**781-235-4300**  
[www.haynesmanagement.com](http://www.haynesmanagement.com)



**OFFICE SUITE AVAILABLE:  
1,932 r.s.f.**



**40 Washington Street is a three story, multi-tenant office building which is strategically situated near the junction of Route 16 and 128, providing quick and easy access to all major highways west of Boston.**

**Locally based Landlord with over 65 years experience,  
that offers quality customer service.**

**For more information:  
781-235-4300  
[www.haynesmanagement.com](http://www.haynesmanagement.com)**