

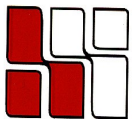
# **40 GROVE STREET**

**WELLESLEY, MA**



**Currently Available**

**2,043 R.S.F.**

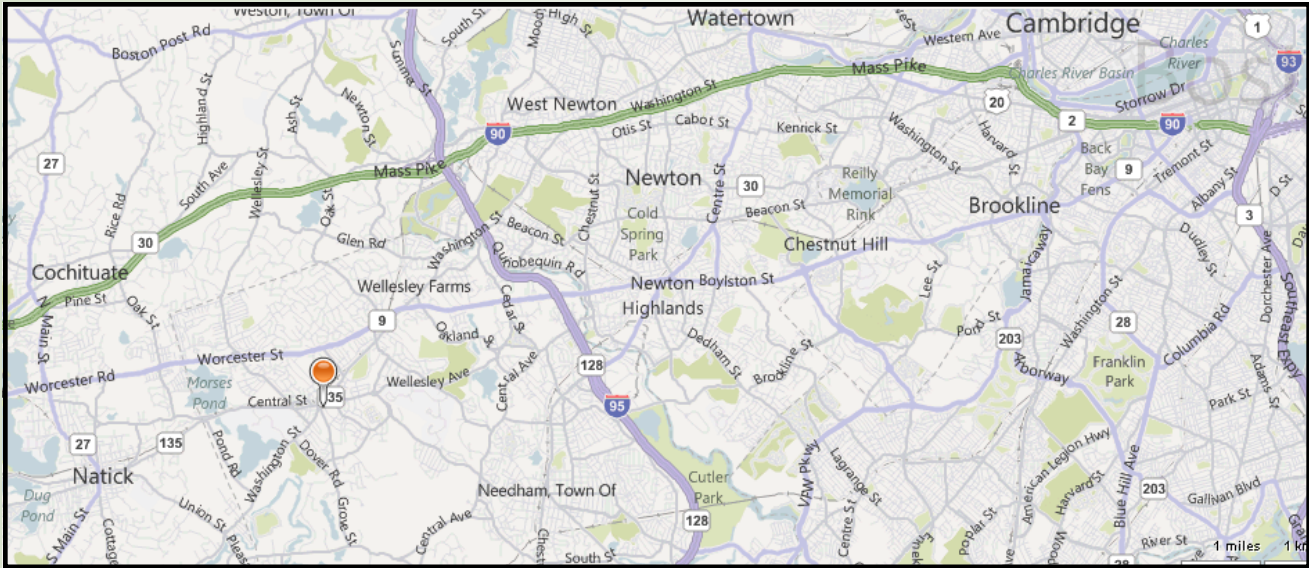


**HAYNES  
MANAGEMENT, INC.**

**781-235-4300**

[www.haynesmanagement.com](http://www.haynesmanagement.com)

**OFFICE SUITE AVAILABLE:  
2,043 R.S.F**

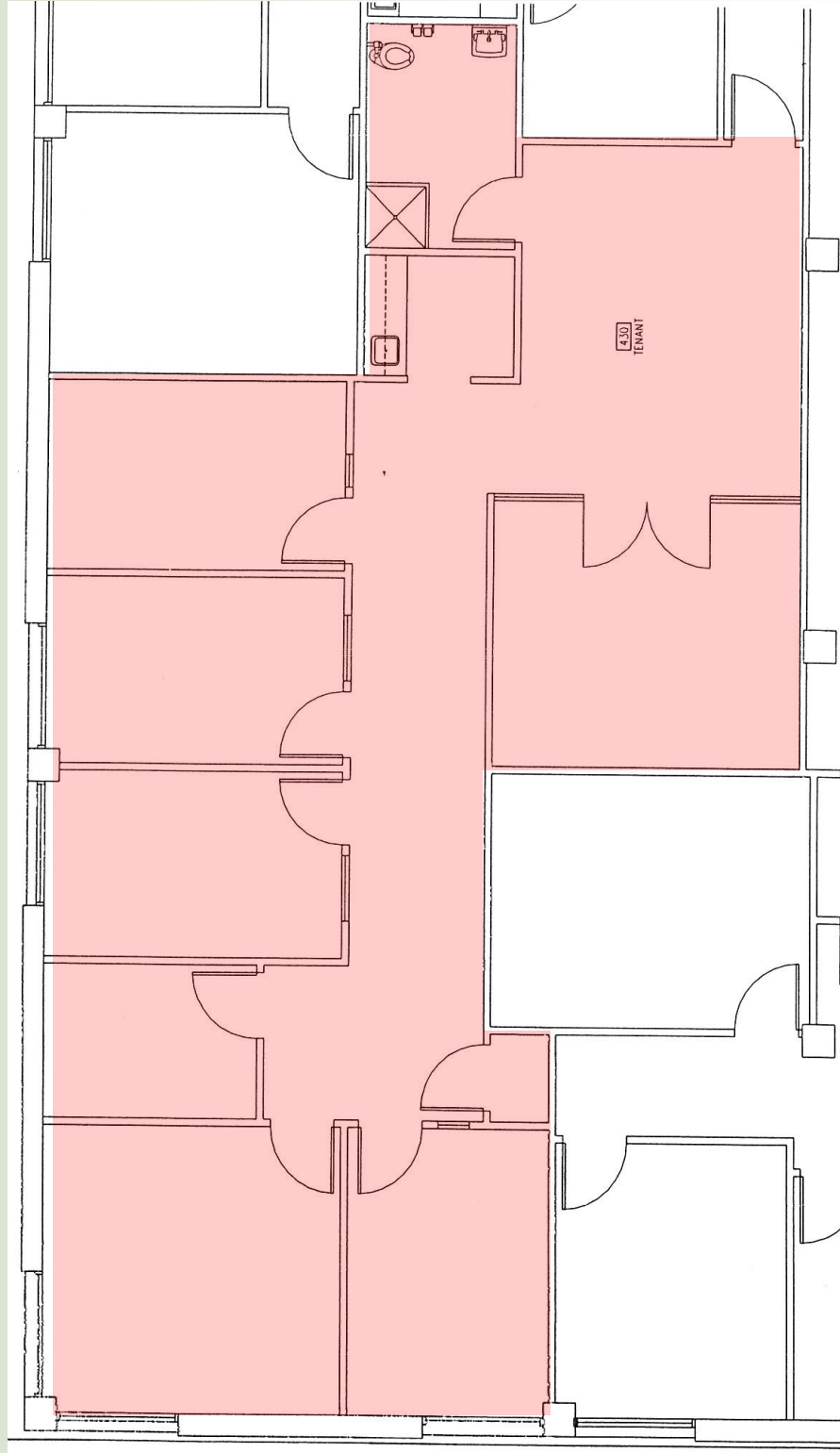


- **Locally based Landlord with 35 years experience, that offers quality customer service.**
- **Located in the heart of Wellesley Square**
- **Many large windows providing excellent light**
- **On-site covered parking**
- **Many amenities at your doorstep**



**For more information:  
781-235-4300  
[www.haynesmanagement.com](http://www.haynesmanagement.com)**

**OFFICE SUITE AVAILABLE:  
2,043 R.S.F on 4th Floor**



**For more information:  
781-235-4300  
[www.haynesmanagement.com](http://www.haynesmanagement.com)**