

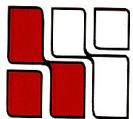
# 40 GROVE STREET

WELLESLEY, MA



**Currently Available:**

**1,647 RSF**

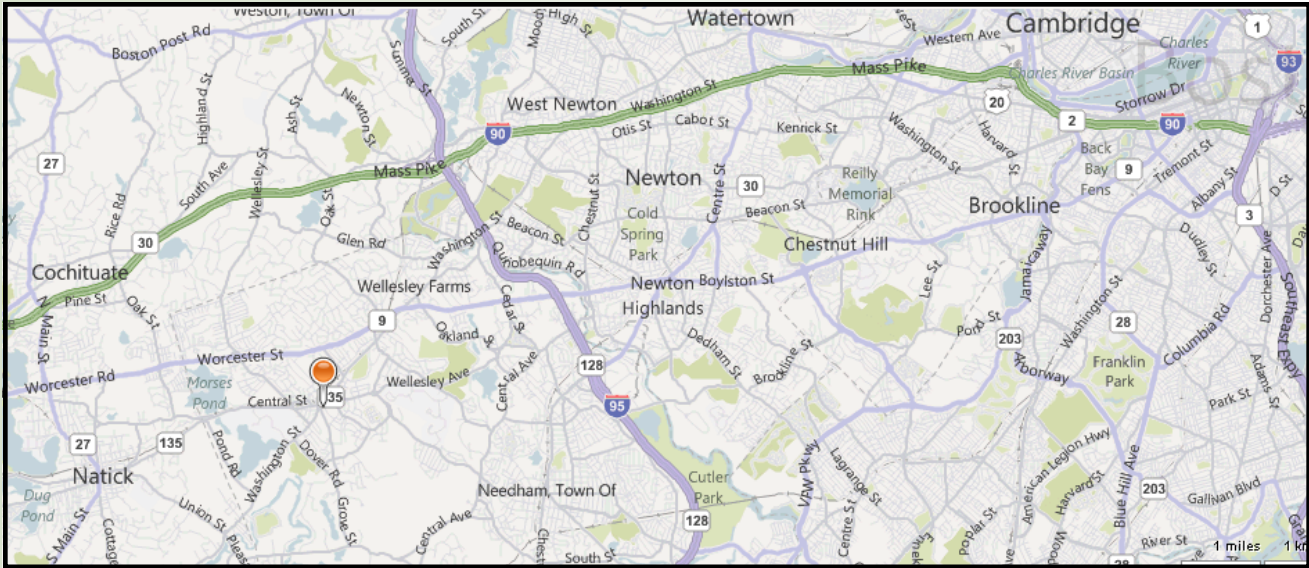


**HAYNES  
MANAGEMENT, INC.**

**781-235-4300**

[www.haynesmanagement.com](http://www.haynesmanagement.com)

**OFFICE SUITE AVAILABLE:  
1,647 R.S.F**



- **Locally based Landlord with 35 years experience, that offers quality customer service.**
- **Located in the heart of Wellesley Square**
- **Many large windows providing excellent light**
- **On-site covered parking**
- **Many amenities at your doorstep**

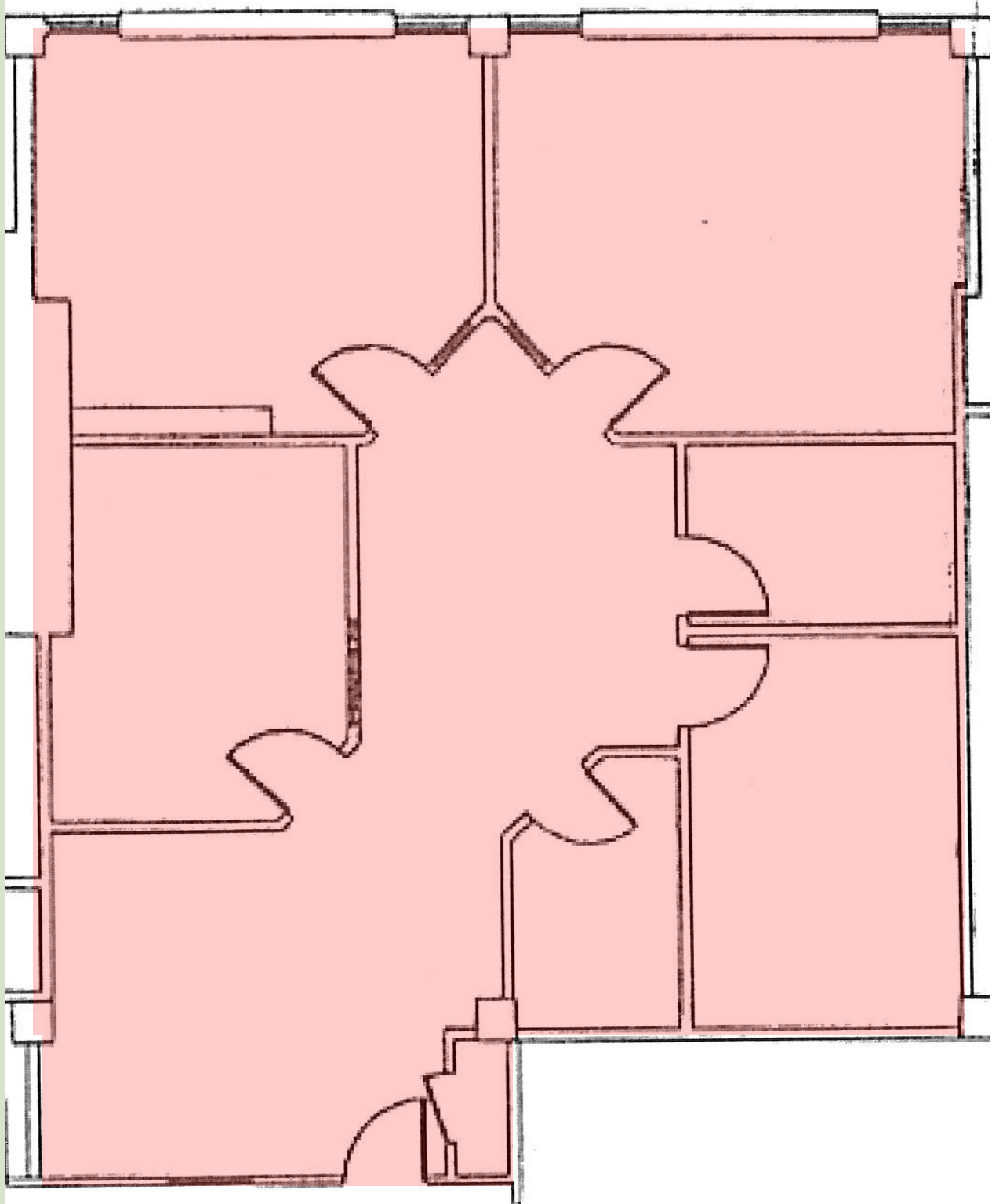


**For more information:  
781-235-4300  
[www.haynesmanagement.com](http://www.haynesmanagement.com)**





**OFFICE SUITE AVAILABLE:  
1,647 R.S.F on Third Floor**



**For more information:  
781-235-4300  
[www.haynesmanagement.com](http://www.haynesmanagement.com)**