

**36 WASHINGTON STREET**  
Wellesley Hills, MA



**Currently Available:  
565 R.S.F.**

**Located by the junction of  
Route 16 & 128**

**Many amenities within walking  
distance such as: banks, a health club,  
restaurants, post office and more!**



**HAYNES  
MANAGEMENT, INC.**

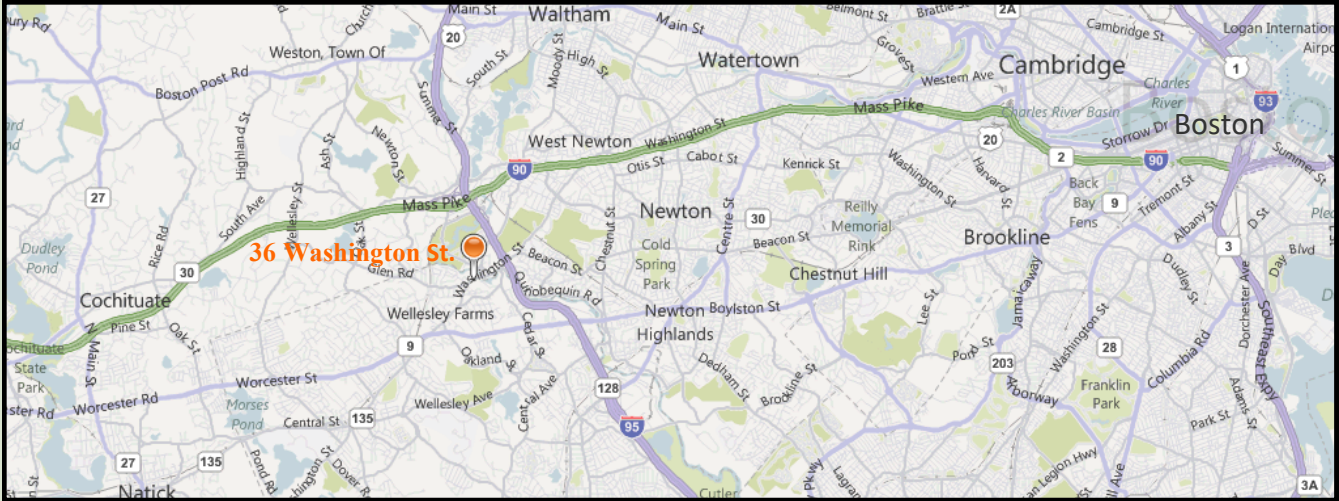
**781-235-4300**

[www.haynesmanagement.com](http://www.haynesmanagement.com)





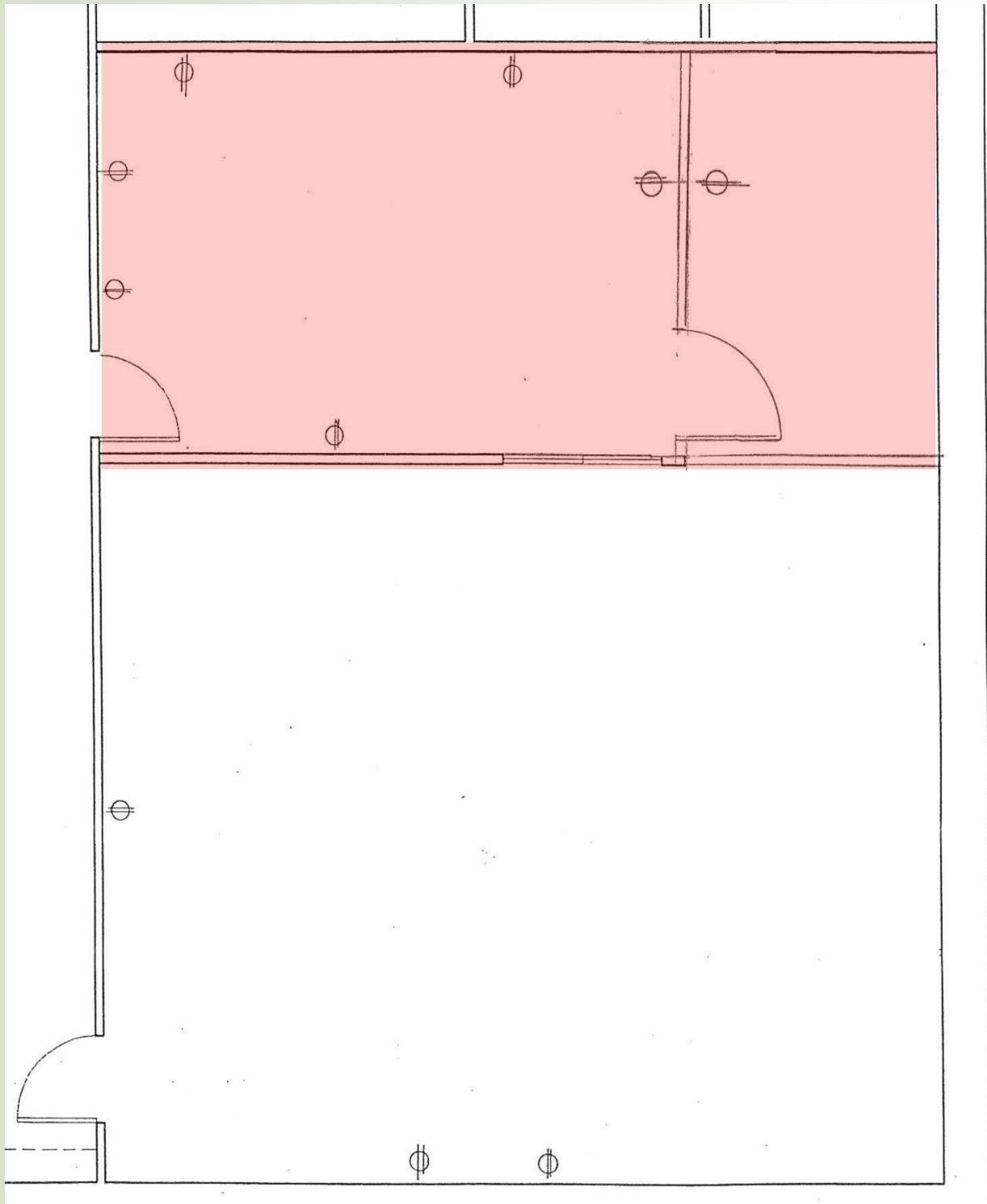
# OFFICE SUITE AVAILABLE: 565 R.S.F



For more information:  
**781-235-4300**  
[www.haynesmanagement.com](http://www.haynesmanagement.com)



**36 Washington Street, Wellesley Hills  
565 R.S.F on the Ground Floor**



**For more information:  
781-235-4300  
[www.haynesmanagement.com](http://www.haynesmanagement.com)**