

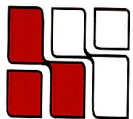
**36 WASHINGTON STREET**  
Wellesley Hills, MA



**Currently Available:  
3,059 R.S.F.**

**Located by the junction of  
Route 16 & 128**

**Many amenities within walking  
distance such as: banks, a health club,  
restaurants, post office and more!**

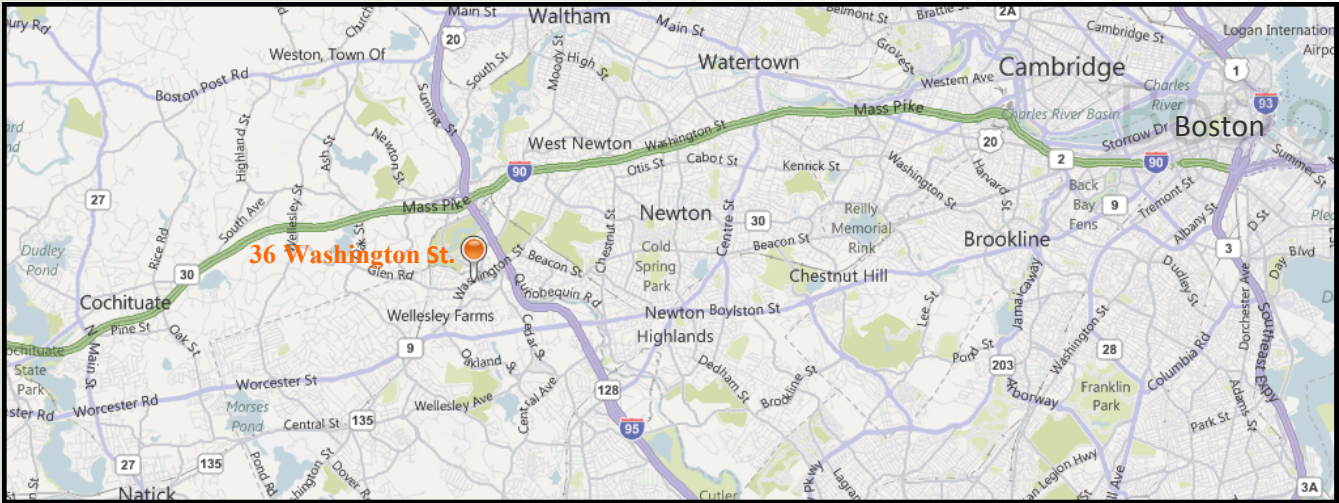


**HAYNES  
MANAGEMENT, INC.**

**781-235-4300**

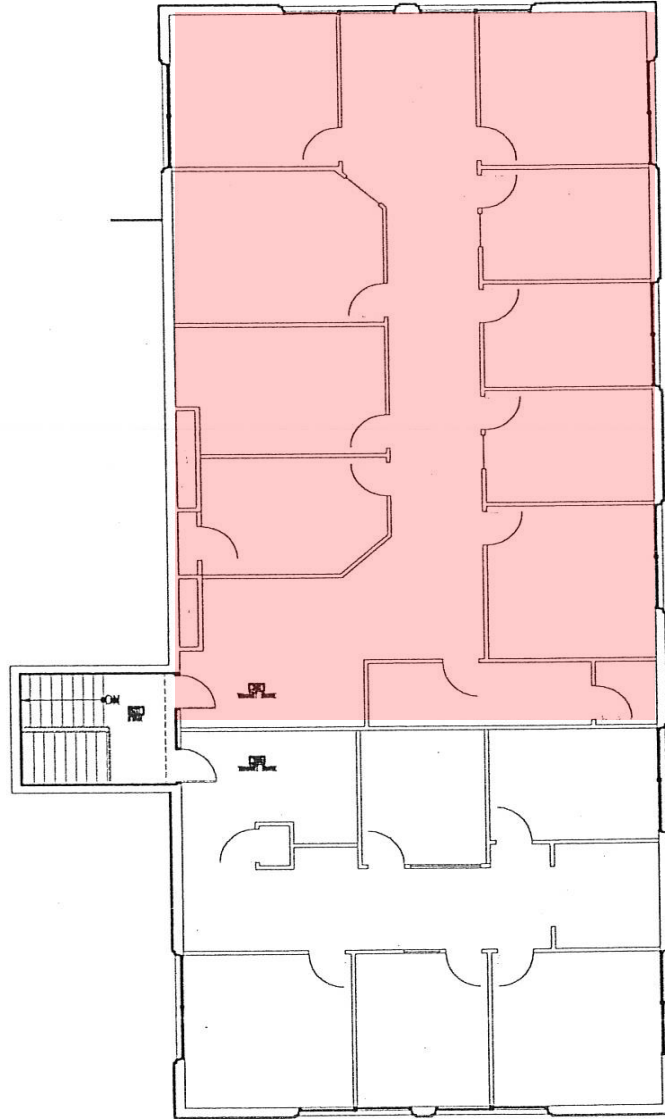
[www.haynesmanagement.com](http://www.haynesmanagement.com)

**OFFICE SUITE AVAILABLE:  
3,059 R.S.F**



**For more information:  
781-235-4300  
[www.haynesmanagement.com](http://www.haynesmanagement.com)**

**36 Washington Street, Wellesley Hills  
3,059 R.S.F on the Third Floor**



**For more information:  
781-235-4300  
[www.haynesmanagement.com](http://www.haynesmanagement.com)**