

36 WASHINGTON STREET
Wellesley Hills, MA



**Currently Available:
1,876 R.S.F.**

**Located by the junction of
Route 16 & 128**

**Many amenities within walking
distance such as: banks, a health club,
restaurants, post office and more!**

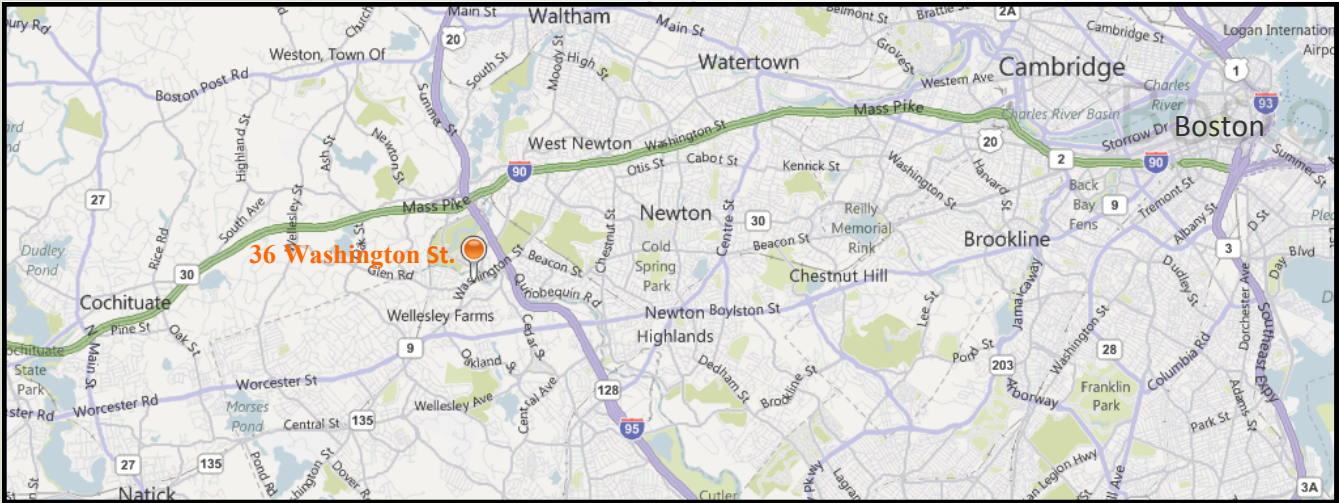


**HAYNES
MANAGEMENT, INC.**

781-235-4300

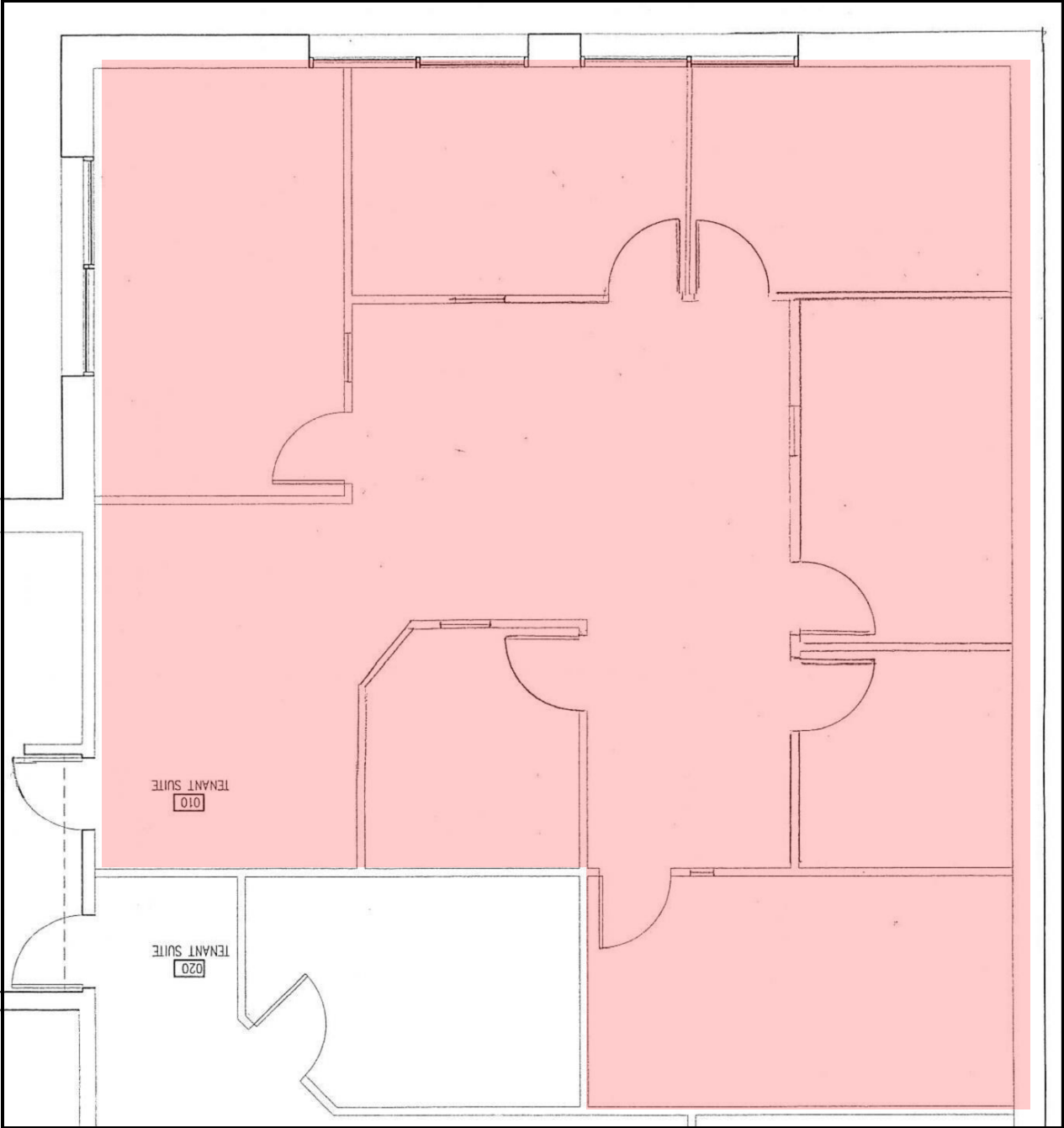
www.haynesmanagement.com

OFFICE SUITE AVAILABLE: 1,876 R.S.F



For more information:
781-235-4300
www.haynesmanagement.com

**36 Washington Street, Wellesley Hills
1,876 R.S.F on the Ground Floor**



**For more information:
781-235-4300
www.haynesmanagement.com**