

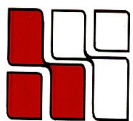
**36 WASHINGTON STREET**  
Wellesley Hills, MA



**Currently Available:  
1,176 R.S.F.**

**Located by the junction of  
Route 16 & 128**

**Many amenities within walking  
distance such as: banks, a health club,  
restaurants, post office and more!**



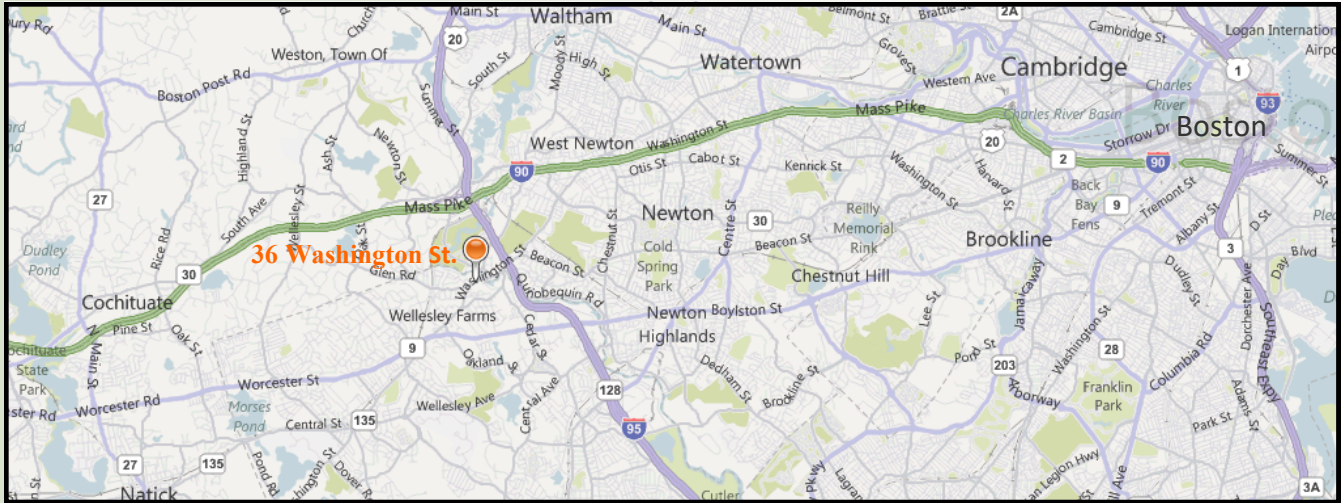
**HAYNES  
MANAGEMENT, INC.**

**781-235-4300**

[www.haynesmanagement.com](http://www.haynesmanagement.com)



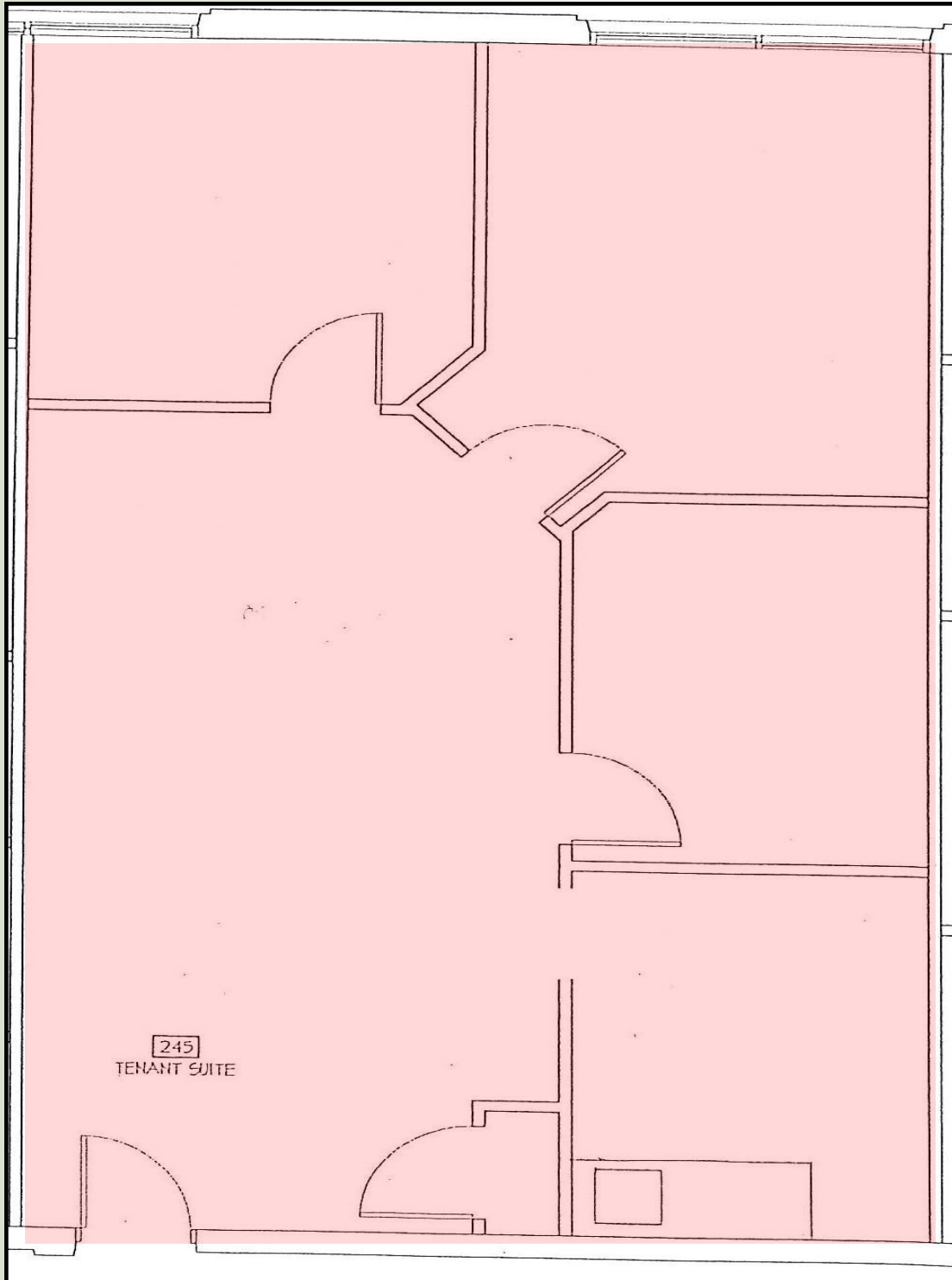
# OFFICE SUITE AVAILABLE: 1,176 R.S.F



For more information:  
**781-235-4300**  
[www.haynesmanagement.com](http://www.haynesmanagement.com)



**36 Washington Street, Wellesley Hills**  
**1,176 R.S.F on the Second Floor**



**For more information:**  
**781-235-4300**  
[www.haynesmanagement.com](http://www.haynesmanagement.com)