

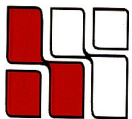


30 WASHINGTON STREET
Wellesley Hills, MA



Office Suite Available: 941 R.S.F - Mezzanine Level

**LOCATED 1/3 MILE FROM THE
JUNCTION OF RTE. 16 & 128
MANY AMENITIES WITHIN WALKING DISTANCE
RESTAURANTS, BANKS, HEALTH CLUB, POST OFFICE
AMPLE PARKING
ATTRACTIVE SUBURBAN SETTING**



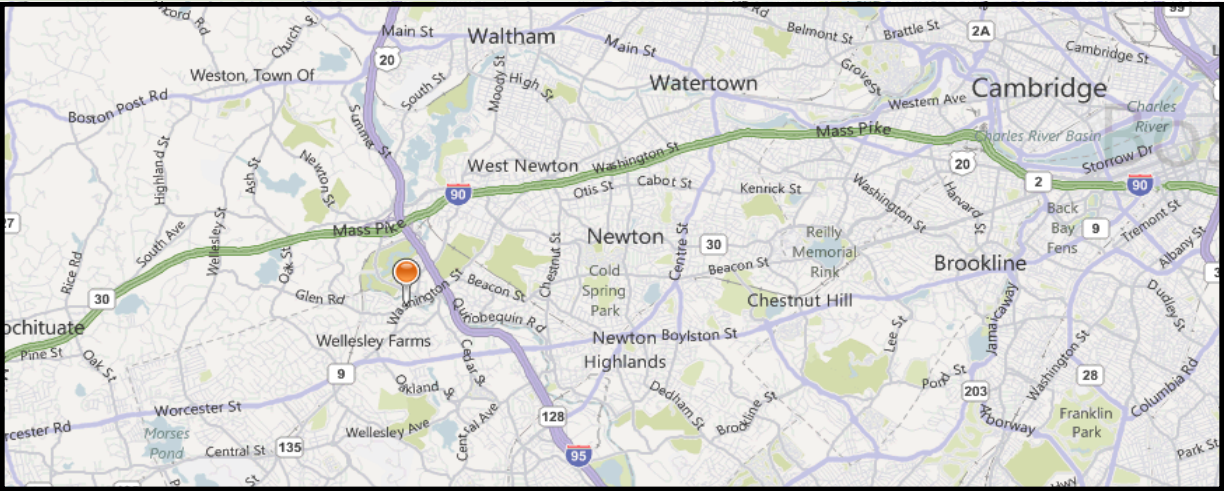
**HAYNES
MANAGEMENT, INC.**

781-235-4300

www.haynesmanagement.com

All information furnished regarding this property is from sources deemed reliable and is submitted subject to errors, omissions, modifications and withdrawals without notice. No warranty or representation is made as to the accuracy of any information contained herein.

OFFICE SUITE AVAILABLE: 30 Washington Street, Wellesley Hills, MA

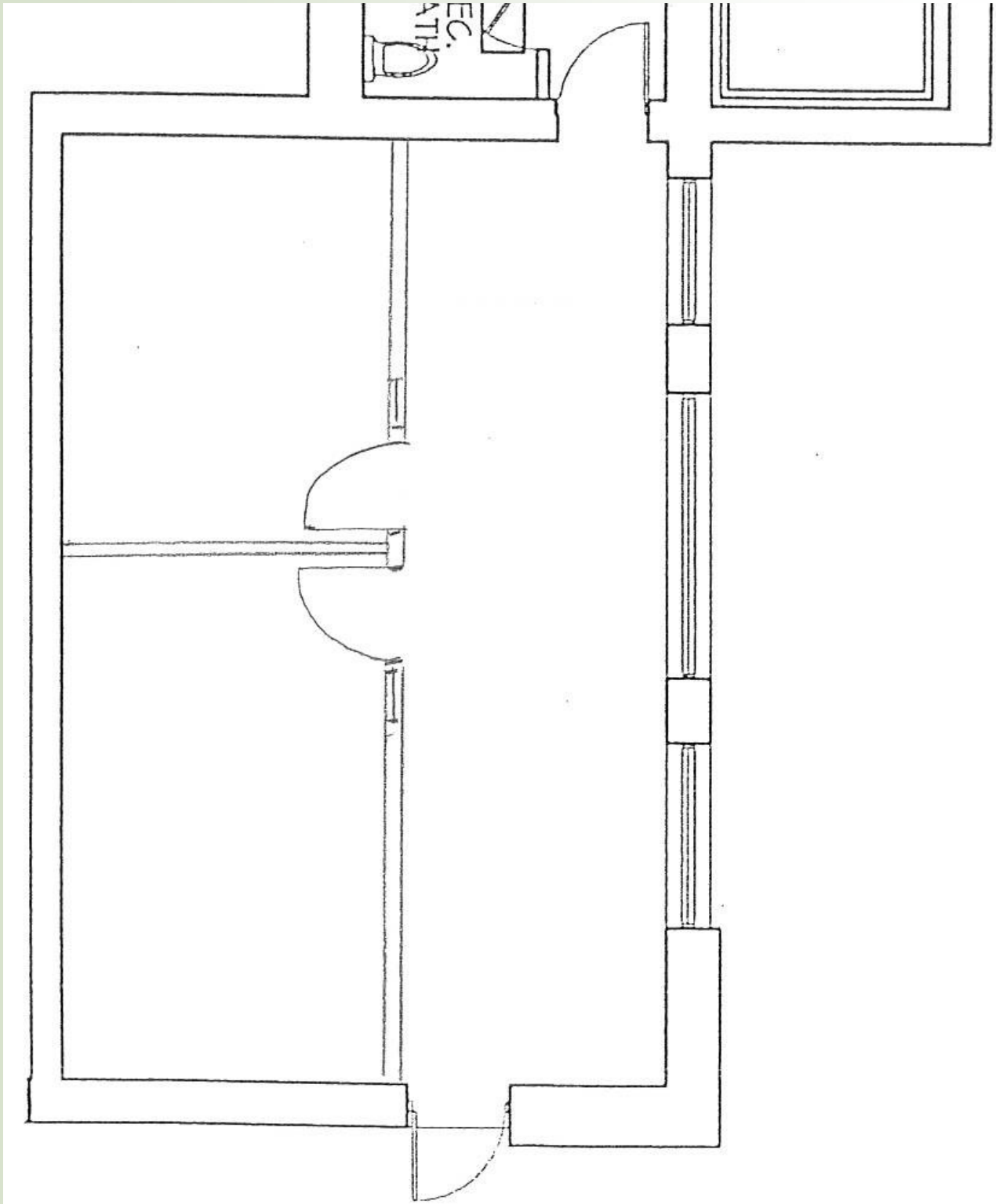


- Locally based Landlord with 35 years experience, that offers quality customer service.
- Large windows providing excellent light.
- Abundant parking
- Quick and easy access to Rte. 128/I-95 & Rte. 90/MassPike
- Many amenities in close walking distance



For more information:
781-235-4300
www.haynesmanagement.com

**OFFICE SUITE AVAILABLE:
941 R.S.F - Mezzanine Level**



**For more information:
781-235-4300
www.haynesmanagement.com**