

25 WALNUT STREET WELLESLEY HILLS, MA



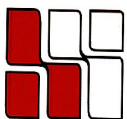
333 RSF

**Located on the
First Floor**

**Charles River
Views**

**LOCATED BY THE JUNCTION OF
RTE. 16 & 128
OVERLOOKING THE CHARLES
RIVER**

**MANY AMENITIES WITHIN WALK-
ING DISTANCE;
SUCH AS: BANKS, HEALTH CLUB,
RESTAURANTS, POST OFFICE AND
MORE.**

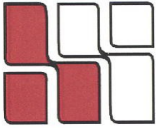


**HAYNES
MANAGEMENT, INC.**
The Suburban Office Experts

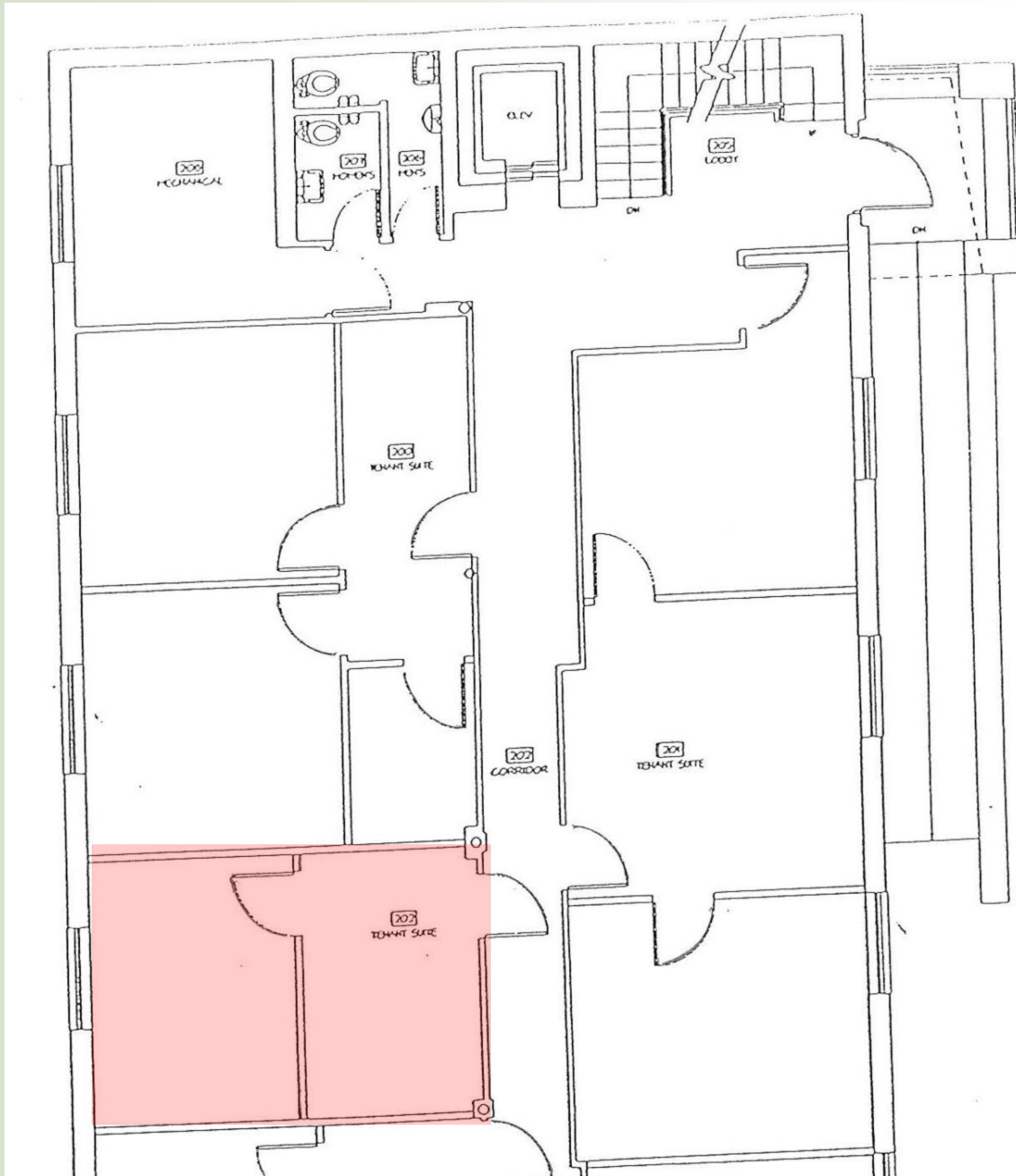
Phone: 781-235-4300

Fax: 781-237-1408

E- Mail: info@haynesmanagement.com



OFFICE SUITE AVAILABLE: 333 RSF



**For more information:
781-235-4300
www.haynesmanagement.com**