

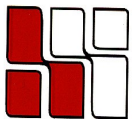
2345 WASHINGTON STREET

Newton Lower Falls, MA



LANDMARK BUILDING

**LOCATED 1/4 MILE FROM THE
JUNCTION OF RTE. 16 & 128
MANY AMENITIES WITHIN WALKING DISTANCE
RESTAURANTS, BANKS, HEALTH CLUB, POST OFFICE
AMPLE PARKING
ATTRACTIVE SUBURBAN SETTING**



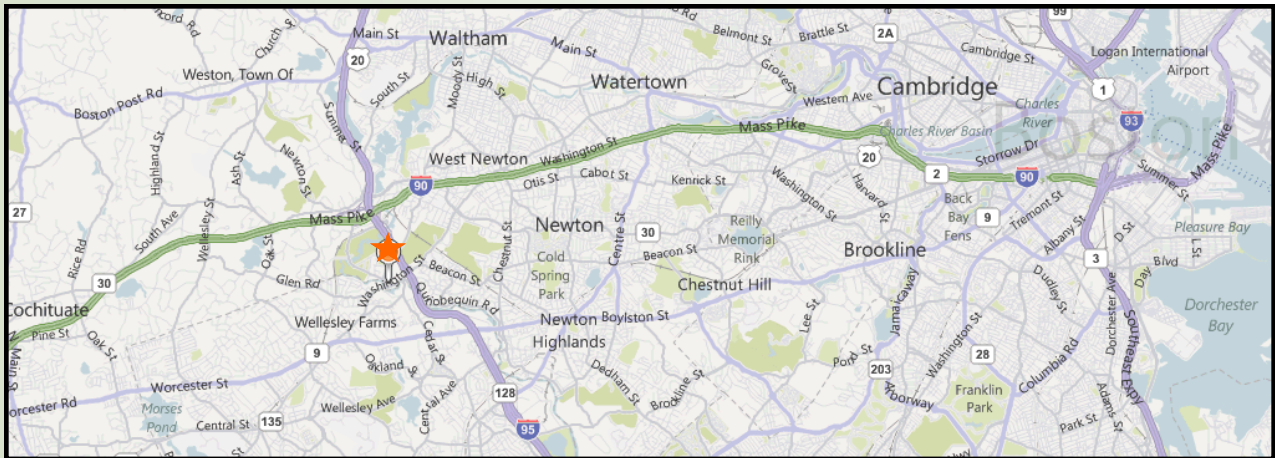
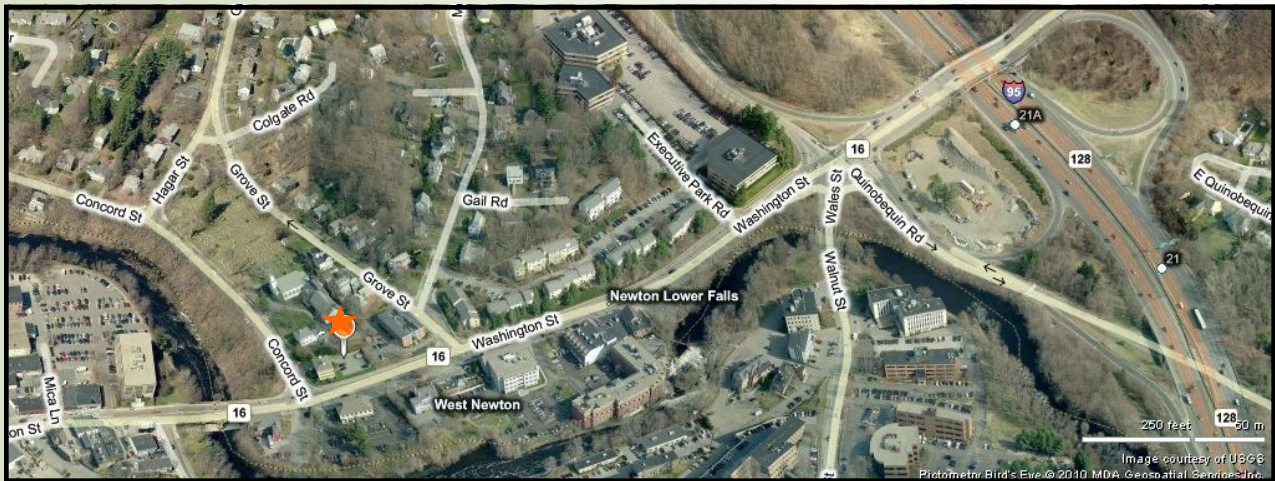
**HAYNES
MANAGEMENT, INC.**

781-235-4300

www.haynesmanagement.com

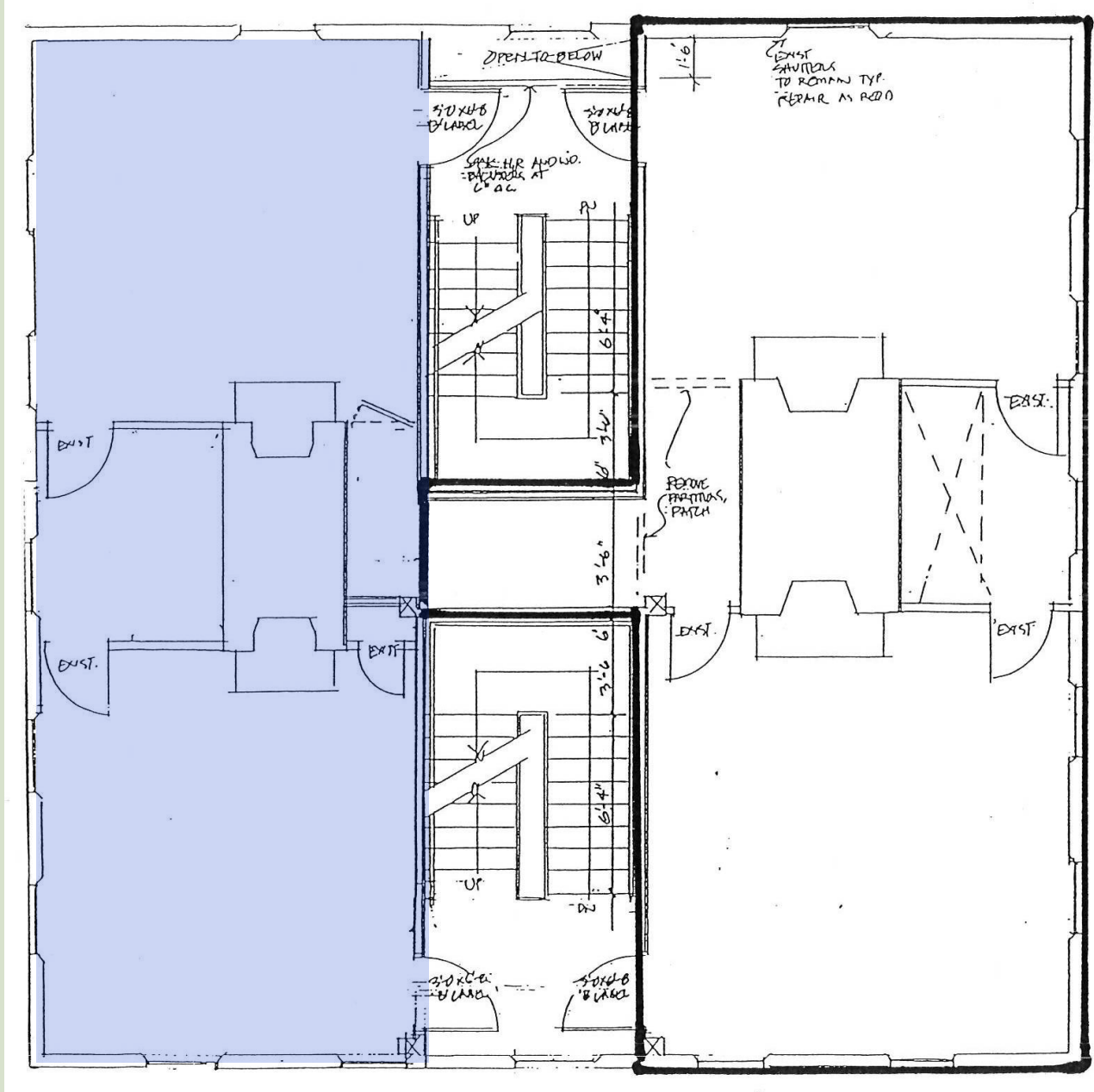
OFFICE SUITE AVAILABLE: 670 RSF on Second Floor

- Lots of Operable Windows
- Many Exposed Beams
- Numerous Fireplaces and Cubbies
- Multi-zoned HVAC System
- Updated Electric Systems
- Unique Working Environment



**For more information:
781-235-4300
www.haynesmanagement.com**

**OFFICE SUITE AVAILABLE:
670 R.S.F on Second Floor**



**For more information:
781-235-4300
www.haynesmanagement.com**