

**HAYNES  
MANAGEMENT INC.**

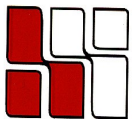
**20 WALNUT STREET**

**Wellesley Hills, MA**



**LOCATED BY THE JUNCTION OF  
RTE. 16 & 128  
OVERLOOKING THE CHARLES RIVER**

**MANY AMENITIES WITHIN  
WALKING DISTANCE;  
SUCH AS: BANKS, HEALTH CLUB,  
RESTAURANTS, POST OFFICE  
AND MORE.**



**HAYNES  
MANAGEMENT, INC.**

**781-235-4300**

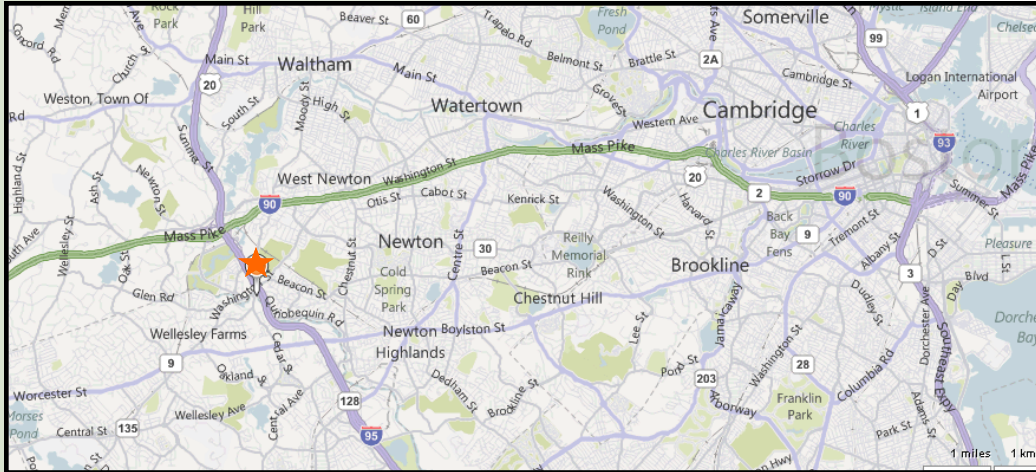
[www.haynesmanagement.com](http://www.haynesmanagement.com)

All information furnished regarding this property is from sources deemed reliable and is submitted subject to errors, omissions, modifications and withdrawals without notice. No warranty or representation is made as to the accuracy of any information contained herein.



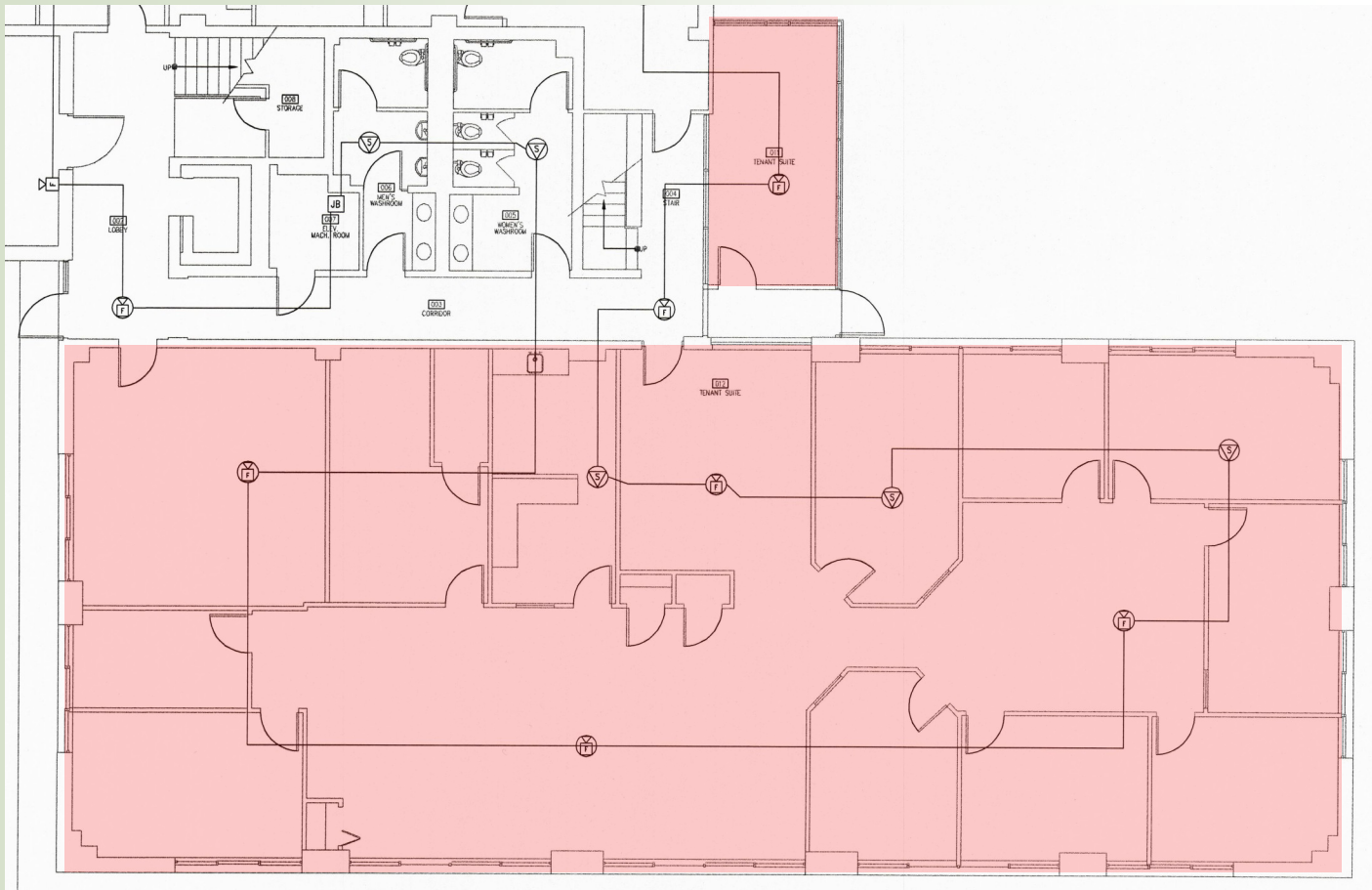


# OFFICE SUITE AVAILABLE: 5,193 R.S.F - Ground Floor



For more information:  
**781-235-4300**  
[www.haynesmanagement.com](http://www.haynesmanagement.com)

# OFFICE SUITE AVAILABLE: 5,193 R.S.F - Ground Floor



For more information:  
**781-235-4300**  
[www.haynesmanagement.com](http://www.haynesmanagement.com)