

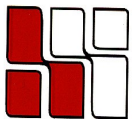
20 WALNUT STREET

Wellesley Hills, MA



**LOCATED BY THE JUNCTION OF
RTE. 16 & 128
OVERLOOKING THE CHARLES RIVER**

**MANY AMENITIES WITHIN
WALKING DISTANCE;
SUCH AS: BANKS, HEALTH CLUB,
RESTAURANTS, POST OFFICE
AND MORE.**



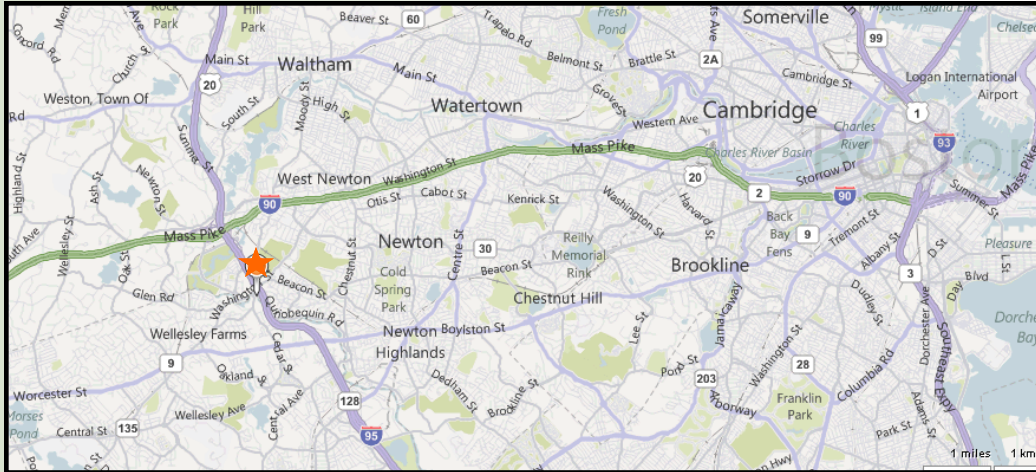
**HAYNES
MANAGEMENT, INC.**

781-235-4300

www.haynesmanagement.com

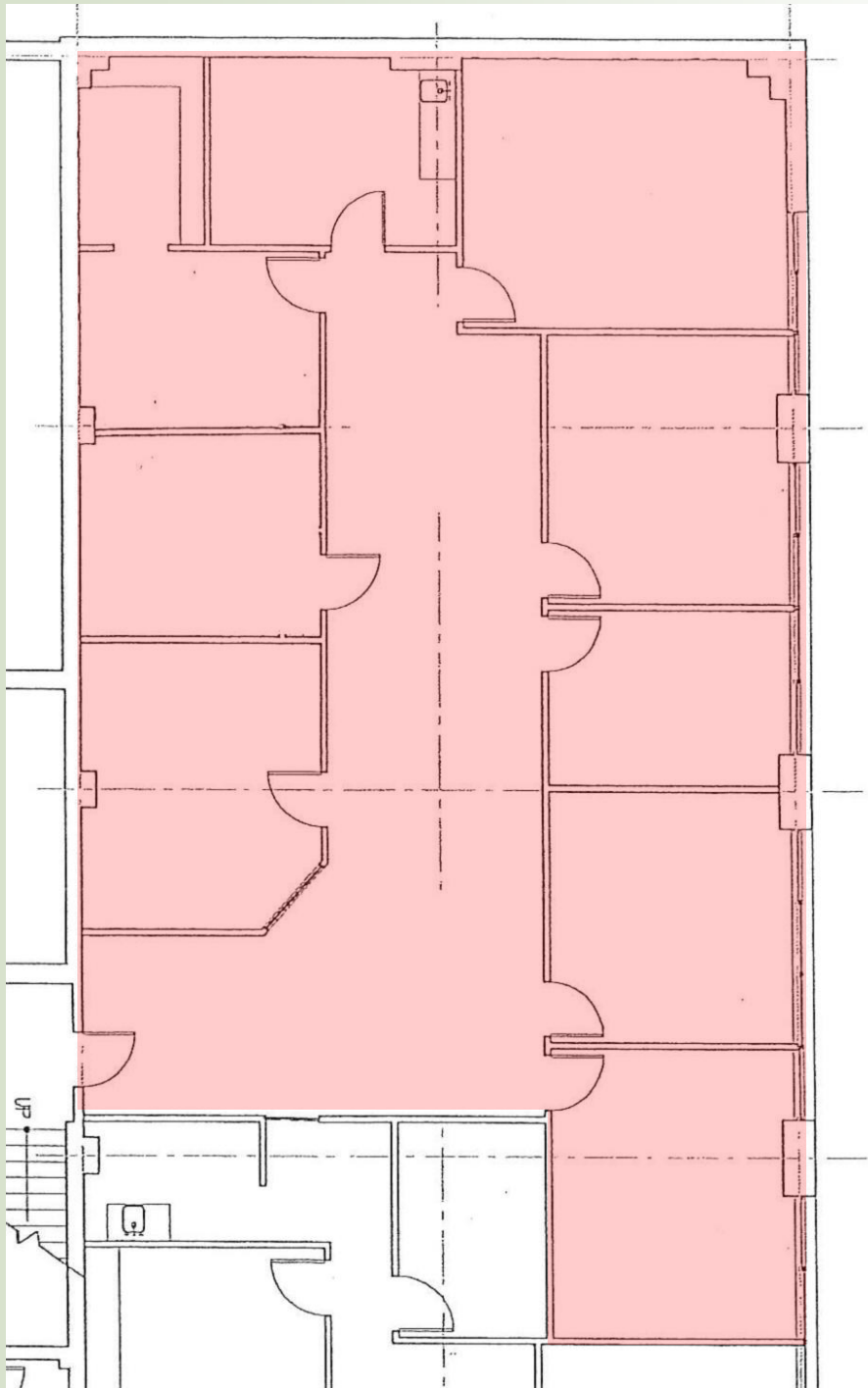


OFFICE SUITE AVAILABLE: 3,007 R.S.F - Ground Floor



For more information:
781-235-4300
www.haynesmanagement.com

**OFFICE SUITE AVAILABLE:
3,007 R.S.F - Ground Floor**



20 Walnut offers first quality office/medical suites, many with attractive river views.

Excellent location provides quick and easy access to and from all major highways west of Boston for employees and visitors.

The building has a two story parking garage; therefore, many of the parking spaces are covered.

**For more information:
781-235-4300
www.haynesmanagement.com**