

**HAYNES
MANAGEMENT INC.**

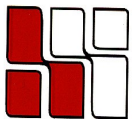
20 WALNUT STREET

Wellesley Hills, MA



**LOCATED BY THE JUNCTION OF
RTE. 16 & 128
OVERLOOKING THE CHARLES RIVER**

**MANY AMENITIES WITHIN
WALKING DISTANCE;
SUCH AS: BANKS, HEALTH CLUB,
RESTAURANTS, POST OFFICE
AND MORE.**



**HAYNES
MANAGEMENT, INC.**

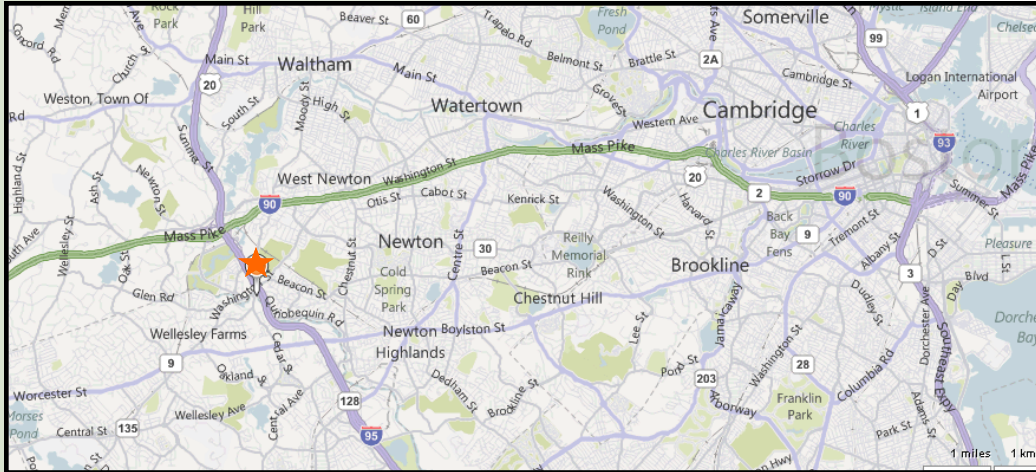
781-235-4300

www.haynesmanagement.com

All information furnished regarding this property is from sources deemed reliable and is submitted subject to errors, omissions, modifications and withdrawals without notice. No warranty or representation is made as to the accuracy of any information contained herein.



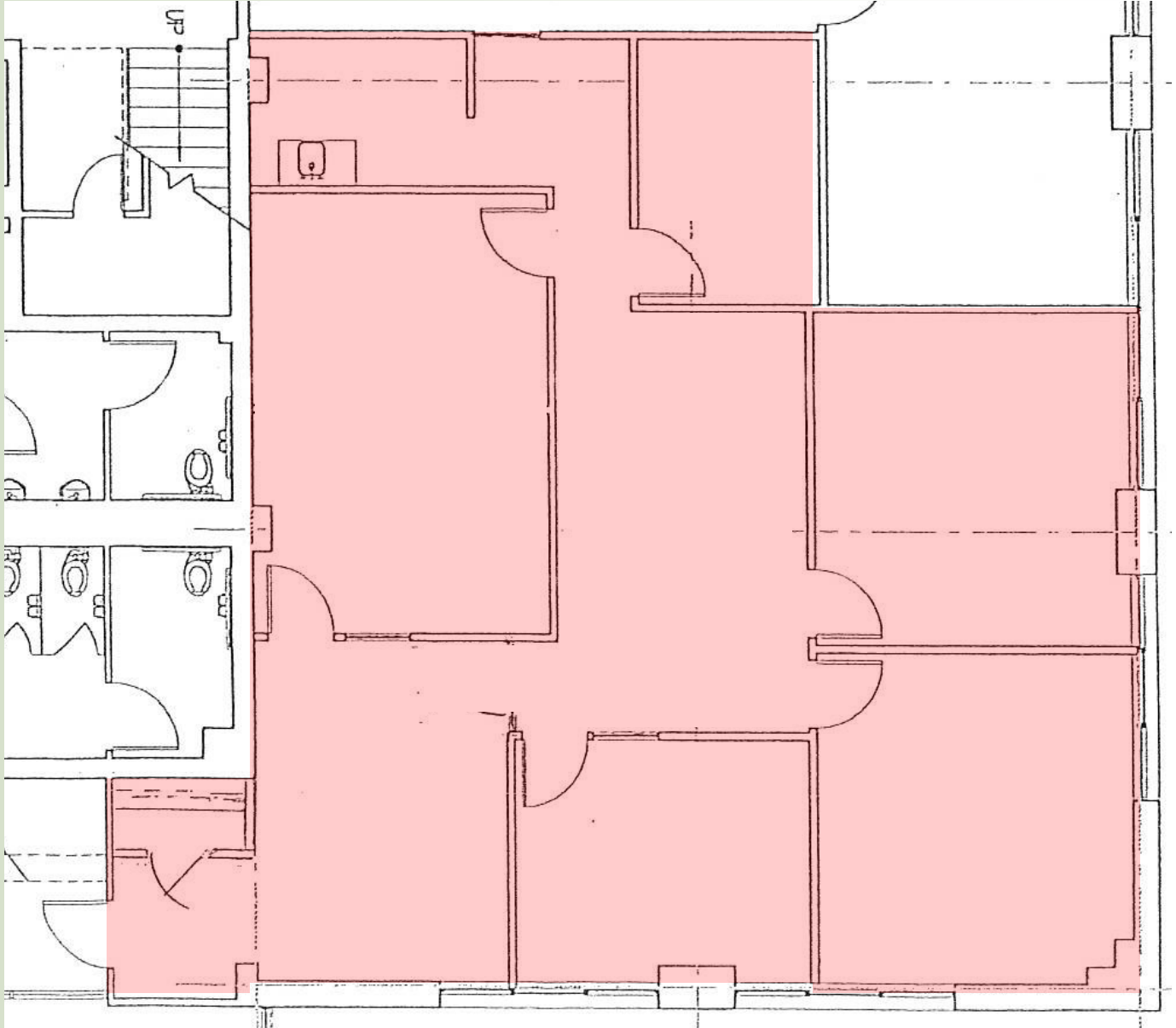
OFFICE SUITE AVAILABLE: 1,730 R.S.F - Ground Floor



For more information:
781-235-4300
www.haynesmanagement.com



**OFFICE SUITE AVAILABLE:
1,730 R.S.F - Ground Floor**



**For more information:
781-235-4300
www.haynesmanagement.com**