



16 LAUREL AVENUE

Wellesley Hills, MA



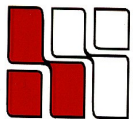
High-end finishes
915 r.s.f.
First Floor

Lots of Windows
Excellent parking

Walking to Public
Commuter Rail

**LOCATED JUST WEST OF THE
JUNCTION OF ROUTE 16 & 9**

**MANY AMENITIES WITHIN
WALKING DISTANCE; SUCH AS:
COMMUTER RAIL STATION, BANKS,
POST OFFICE, RESTAURANTS,
HEALTH CLUB
AND MORE.**

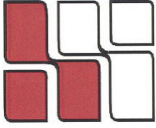


**HAYNES
MANAGEMENT, INC.**

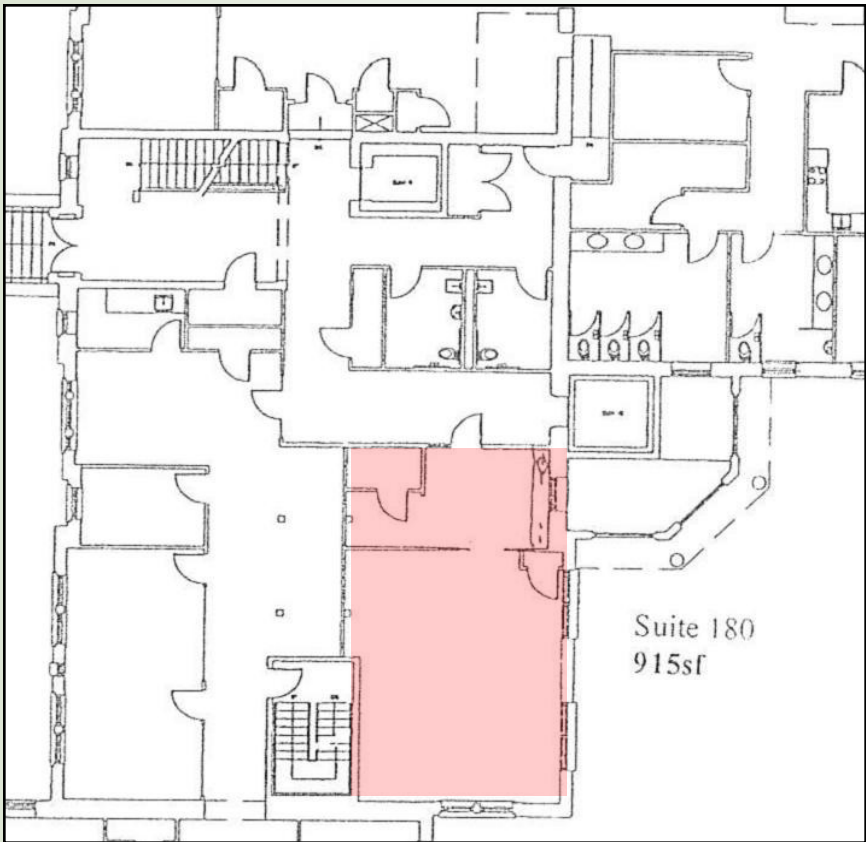
781-235-4300

www.haynesmanagement.com

All information furnished regarding this property is from sources deemed reliable and is submitted subject to errors, omissions, modifications and withdrawals without notice. No warranty or representation is made as to the accuracy of any information contained herein.



**16 Laurel Avenue:
915 R.S.F**



**For more information:
781-235-4300
www.haynesmanagement.com**