

16 LAUREL AVENUE

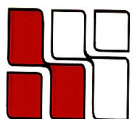
Wellesley Hills, MA



**9,110 r.s.f.
First Floor**

**LOCATED JUST WEST OF THE
JUNCTION OF ROUTE 16 & 9**

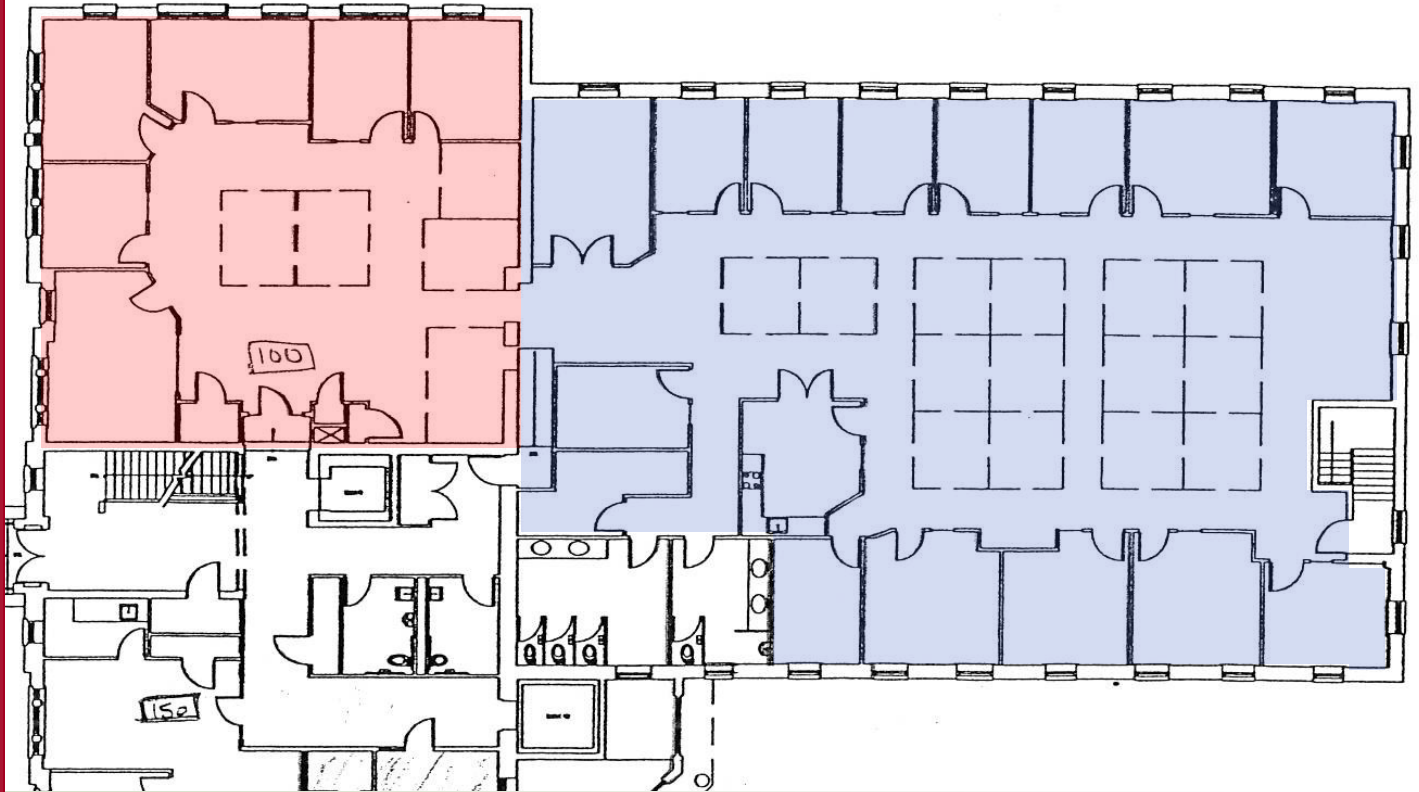
**MANY AMENITIES WITHIN WALKING DISTANCE:
COMMUTER RAIL STATION, BANKS, POST OFFICE, RESTAURANTS,
HEALTH CLUB AND MORE.**



**HAYNES
MANAGEMENT, INC.**

781-235-4300

www.haynesmanagement.com



3,460 RSF

5,650 RSF

For more information:
781-235-4300
www.haynesmanagement.com