

1040 WALTHAM STREET

LEXINGTON, MA

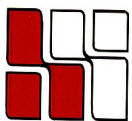
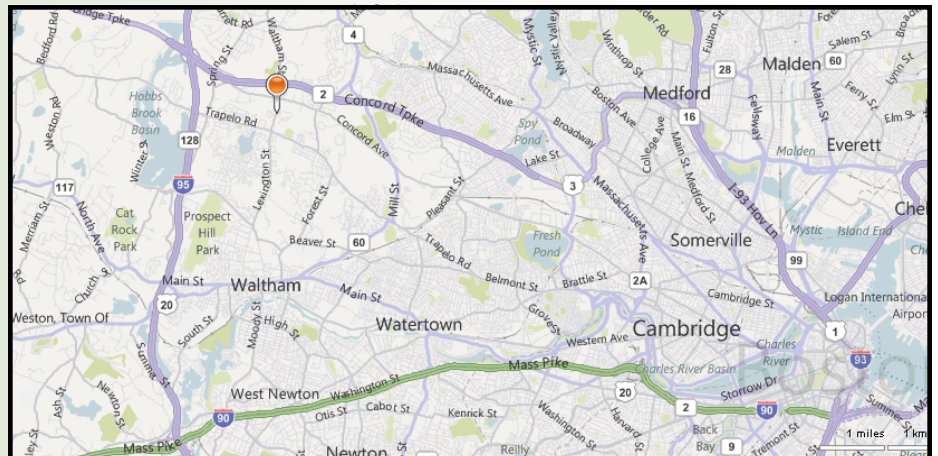


**CURRENTLY
AVAILABLE:**

**7,205 RSF
Ground Floor**

**LOCATED NEAR THE
JUNCTION OF
RTE. 2 & RTE. 128
ON THE
WALTHAM /
LEXINGTON
TOWN LINE**

**MANY AMENITIES
WITHIN
WALKING DISTANCE
SUCH AS:
RESTAURANTS, BANKS,
OFFICE SUPPLIES AND
MORE.**



**HAYNES
MANAGEMENT, INC.**

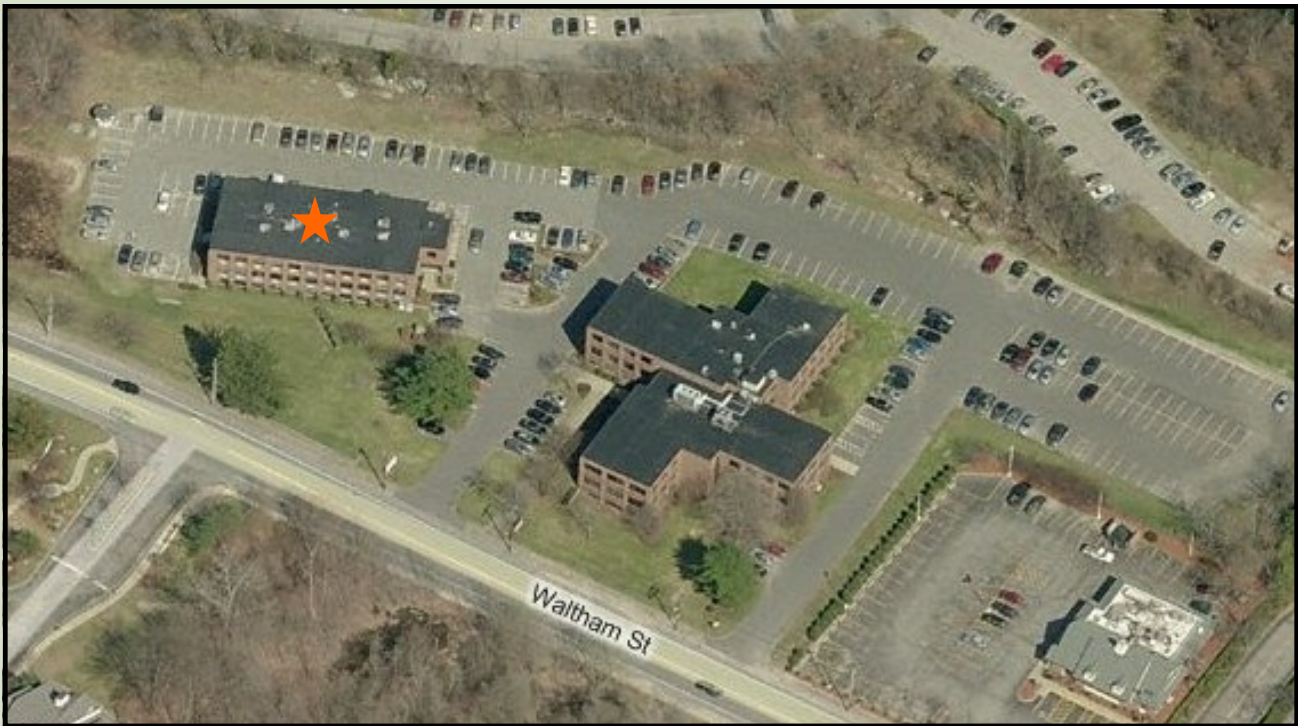
781-235-4300

www.haynesmanagement.com

All information furnished regarding this property is from sources deemed reliable and is submitted subject to errors, omissions, modifications and withdrawals without notice. No warranty or representation is made as to the accuracy of any information contained herein.

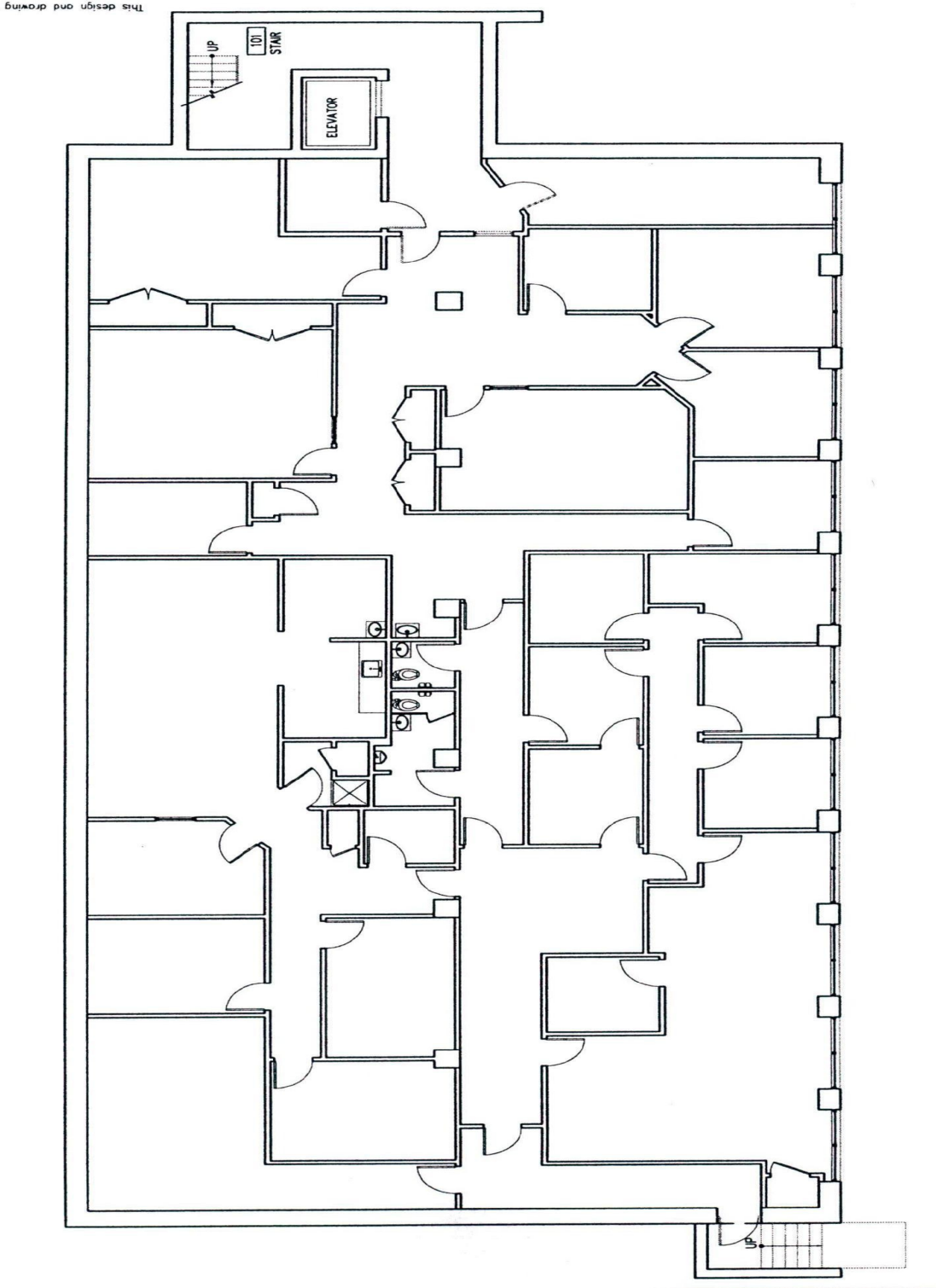
1040 WALTHAM STREET Lexington, MA

- Private street signage
- Locally based Landlord with 35 years experience, that offers quality customer service.
- On-site Building Management
- Extra large windows providing excellent light.
- Abundant parking
- Quick and easy access to Rte. 128 & Route 2



For more information:
781-235-4300
www.haynesmanagement.com

**1040 WALTHAM STREET
7,205 RSF on the Ground Floor**



**For more information:
781-235-4300
www.haynesmanagement.com**