

10 LAUREL AVENUE

Wellesley Hills, MA



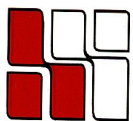
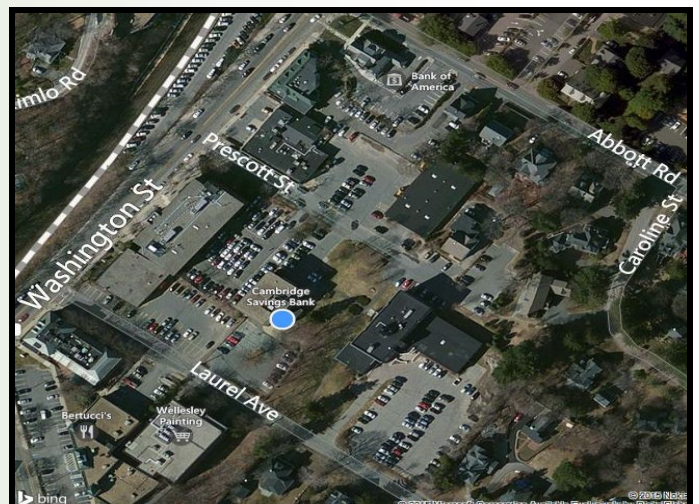
**High-end finishes
1,518 r.s.f.
First Floor**

**Lots of Windows
Excellent parking**

**Walking to Public
Commuter Rail**

**LOCATED JUST WEST OF THE
JUNCTION OF ROUTE 16 & 9**

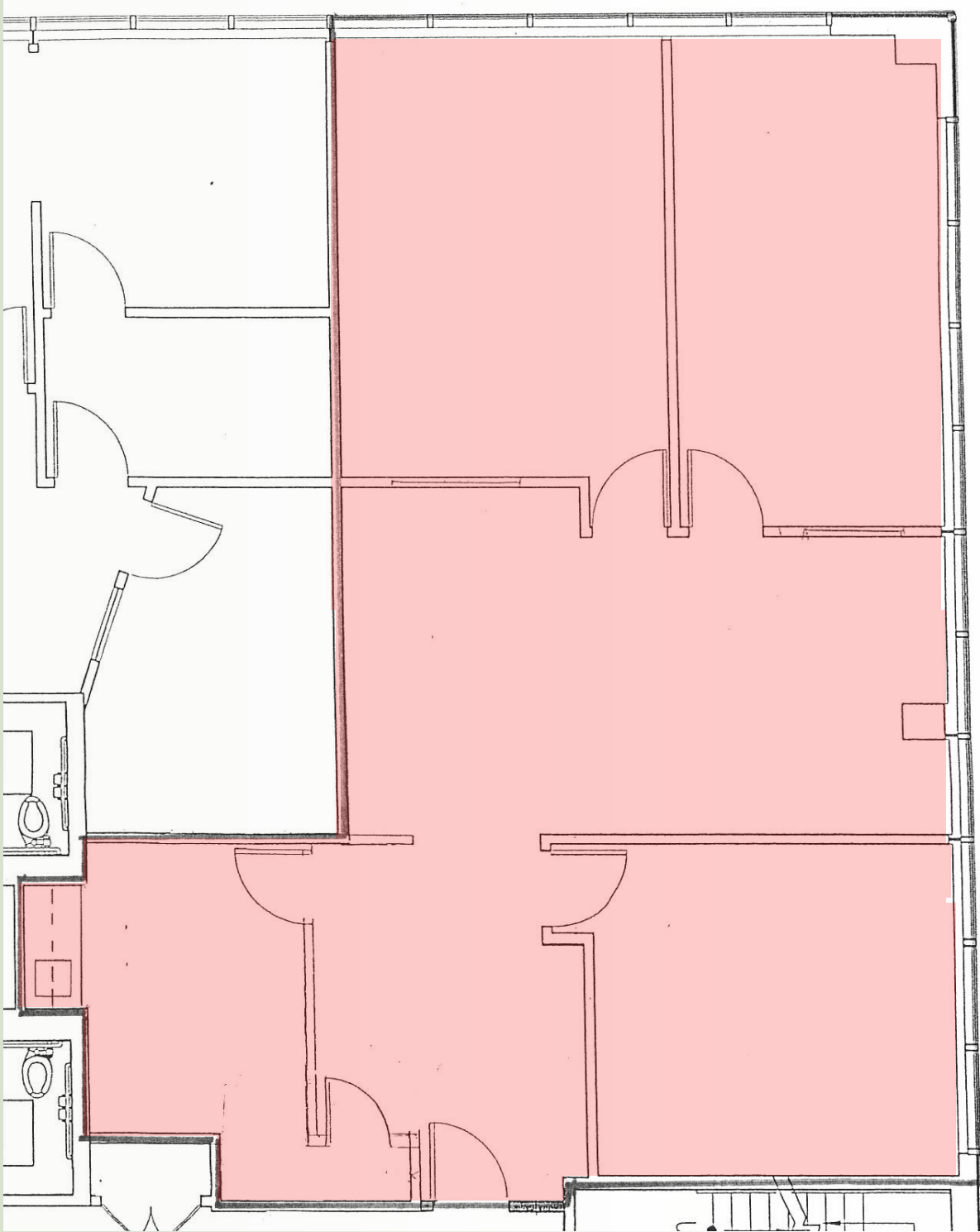
**MANY AMENITIES WITHIN
WALKING DISTANCE; SUCH AS:
COMMUTER RAIL STATION, BANKS,
POST OFFICE, RESTAURANTS,
HEALTH CLUB
AND MORE.**



**HAYNES
MANAGEMENT, INC.**

781-235-4300

www.haynesmanagement.com



For more information:
781-235-4300
www.haynesmanagement.com