

HAYNES MANAGEMENT,
INC.

OFFICE SPACE FOR LEASE
4,800 Square Foot Office Suite

MOUNT ROYAL OFFICE PARK

Rte. 20 & Rte. 495
MARLBOROUGH, MA



Ready For Occupancy

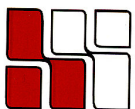
Corner Suite
Private Offices
Large Open Area

Conference Room
&
Kitchenette

Strategically located on the southwest quadrant of the intersection of Rt. 20 & Rt. 495

Minutes to the Mass Pike

Attractive office park setting offering abundant parking, great views, easy access to the highway many amenities and new fitness center.

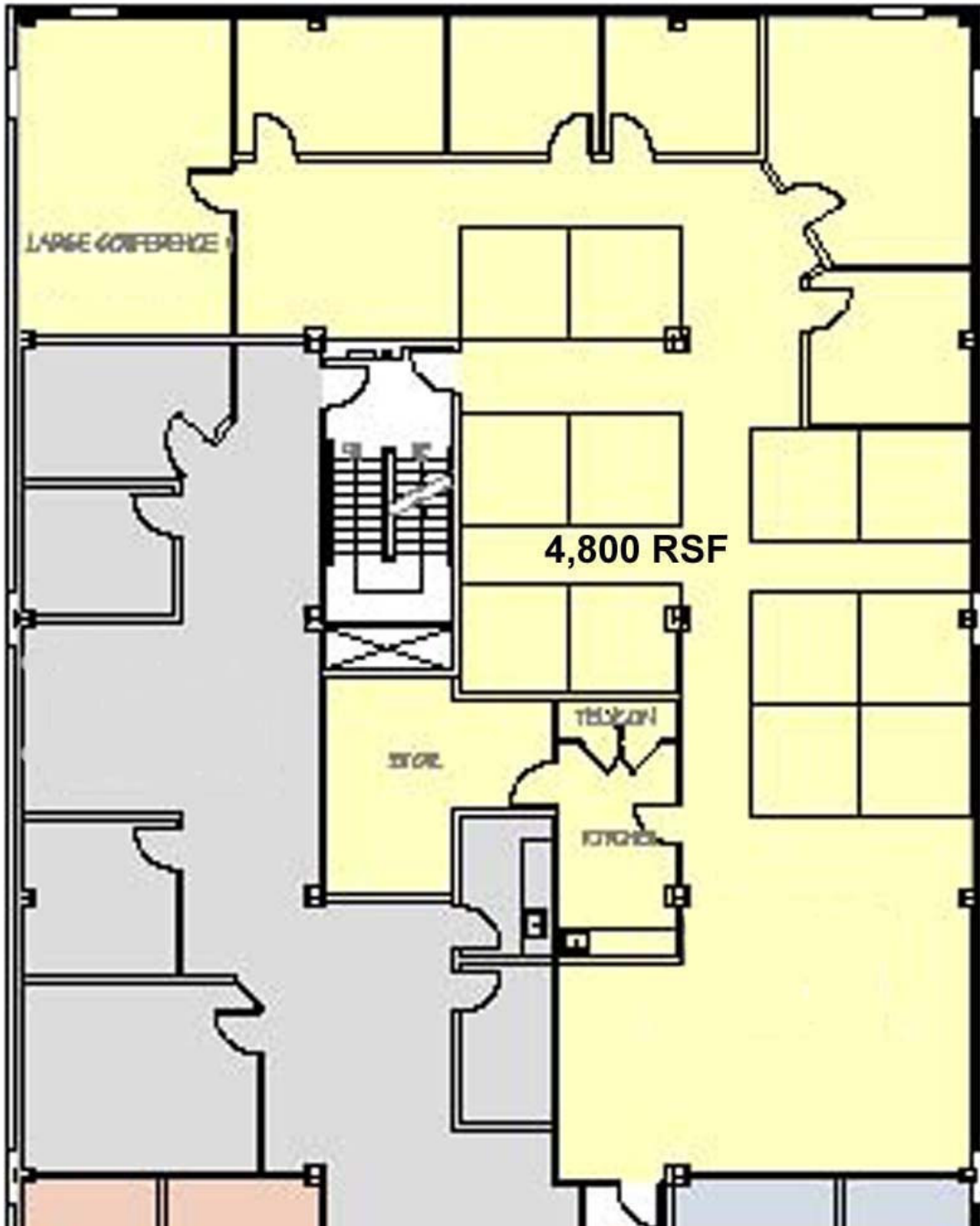


**HAYNES
MANAGEMENT, INC.**

The Suburban Office Experts

Phone: 781-235-4300
www.haynesmanagement.com

MOUNT ROYAL OFFICE PARK



34 Washington Street Wellesley Hills, MA 02481

781-235-4300

www.haynesmanagement.com