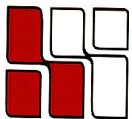


**30 WASHINGTON STREET**  
Wellesley Hills, MA



**Office Suite Available: 5,771 R.S.F - Entire Top Floor**

**LOCATED 1/3 MILE FROM THE  
JUNCTION OF RTE. 16 & 128  
MANY AMENITIES WITHIN WALKING DISTANCE  
RESTAURANTS, BANKS, HEALTH CLUB, POST OFFICE  
AMPLE PARKING  
ATTRACTIVE SUBURBAN SETTING**



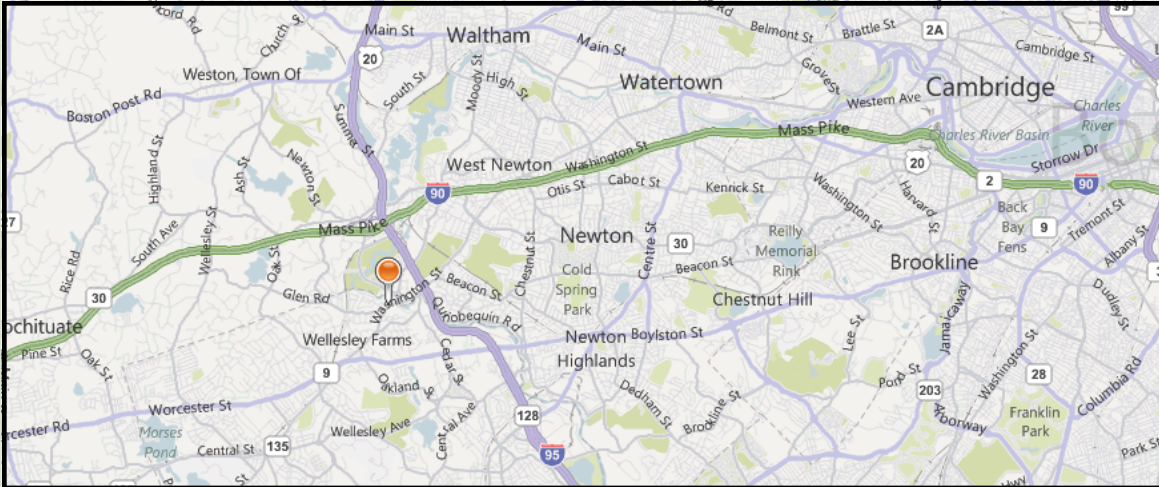
**HAYNES  
MANAGEMENT, INC.**

**781-235-4300**

[www.haynesmanagement.com](http://www.haynesmanagement.com)

All information furnished regarding this property is from sources deemed reliable and is submitted subject to errors, omissions, modifications and withdrawals without notice. No warranty or representation is made as to the accuracy of any information contained herein.

# OFFICE SUITE AVAILABLE: 5,771 R.S.F

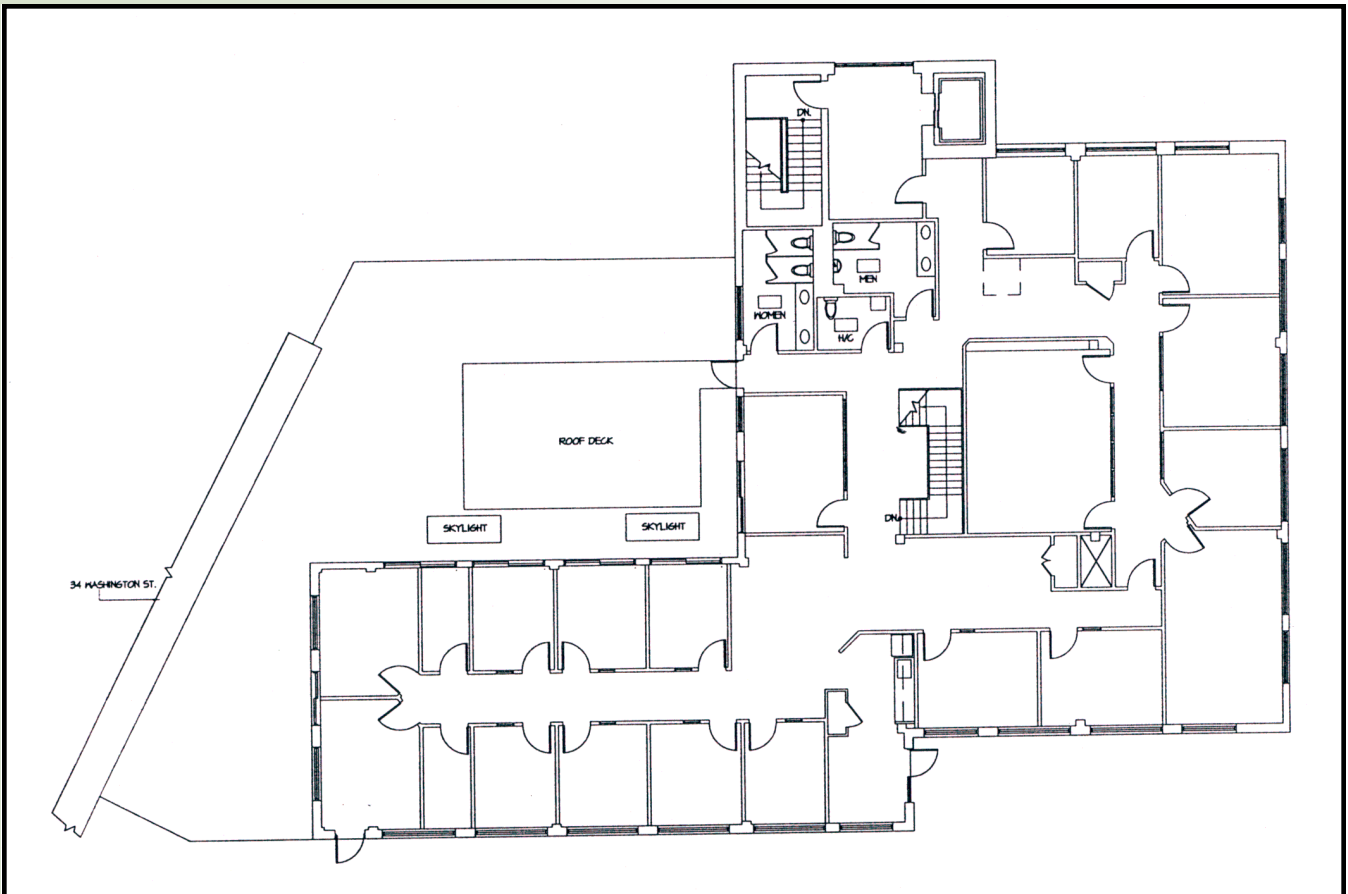


For more information:  
**781-235-4300**  
[www.haynesmanagement.com](http://www.haynesmanagement.com)

## OFFICE SUITE AVAILABLE: 5,771 R.S.F



- Locally based Landlord with 35 years experience, that offers quality customer service.
- Large windows providing excellent light.
- Abundant parking
- Quick and easy access to Rte. 128/I-95 & Rte. 90/MassPike
- Many amenities in close walking distance
- Private Roof Deck



For more information:  
**781-235-4300**  
[www.haynesmanagement.com](http://www.haynesmanagement.com)