

HAYNES MANAGEMENT,  
INC.

***FOR LEASE***

**30 WASHINGTON STREET  
WELLESLEY HILLS, MA**

**941 Square Feet**



LOCATED 1/3 MILE FROM THE JUNCTION OF  
RT 16 & RT 128

MANY AMENITIES WITHIN WALKING DISTANCE  
SUCH AS: BANKS, HEALTH CLUB, RESTAURANTS, POST OFFICE AND MORE.

ATTRACTIVE SUBURBAN SETTING

AMPLE PRIVATE PARKING

***EXCLUSIVE AGENT***



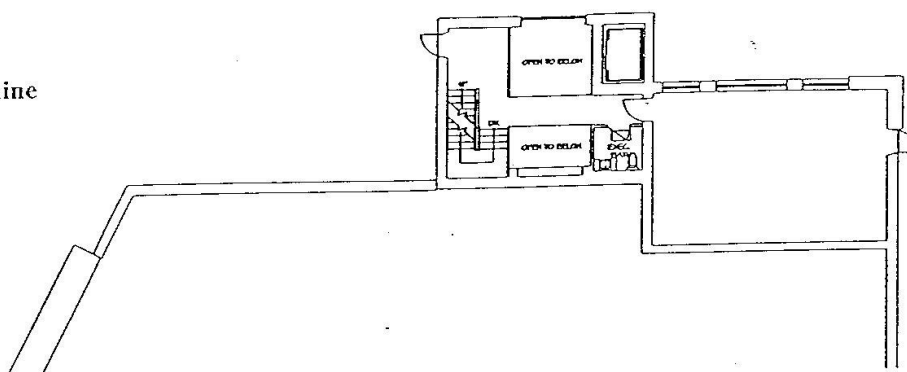
**781-235-4300**

[www.haynesmanagement.com](http://www.haynesmanagement.com)

# 30 WASHINGTON STREET, WELLESLEY HILLS, MA

30 WASHINGTON STREET  
WELLESLEY HILLS, MA

Mezzanine



**Haynes Management, Inc. 34 Washington Street Wellesley Hills, MA 02481**

**781-235-4300**

All information furnished regarding this property is from sources deemed reliable and is submitted subject to errors, omissions, modifications and withdrawals without notice. No warranty or representation is made as to the accuracy of any information contained herein.