

HAYNES MANAGEMENT,
INC.



The Suburban Office Experts

MOUNT ROYAL OFFICE PARK

**Rte. 20 & Rte. 495
MARLBOROUGH, MA**



*Office Services
at Mount Royal
offers
individual
offices
leased on a
month-to-month
basis with
great expansion
possibilities*

Strategically situated in the southwest corner of the junction of RTE. 20 & Rte. 495

Attractive office park setting offering abundant parking, great views, easy access to the highway and many amenities.



**HAYNES
MANAGEMENT, INC.**

The Suburban Office Experts

Phone: 781-235-4300

E- Mail: info@haynesmanagement.com

MOUNT ROYAL OFFICE PARK



LOCATION:

Mount Royal is prominently located at the intersection of Rte. 20 & I-495 and offers spectacular views looking out over the surrounding countryside.

FLEXIBLE OFFICE SPACE:

“Office Services at Mount Royal” offers fully furnished offices leased on a month-to-month basis; providing a small company with great flexibility. Discounts offered for multiple offices. Opportunity to expand into your own office suite.



DESIGNED WITH TENANTS IN MIND:

Haynes Management recognizes that even smaller office tenant's need big league communications and technology, so all of the buildings have been “pre-lit” with T-1 lines by Intellispace, that offers scalable bandwidth to provide Tenants with quick high-speed internet access sized appropriately for their business.

The Advantages of a Haynes managed property:

- **Local ownership and management with over 35 years experience**
- **Superior service to our tenants that is prompt, effective & complete**
- **24 hours per day, 7 days per week “on-call” property manager**
- **46 office properties in the western suburbs of Boston and Southern NH**



The Suburban Office Experts

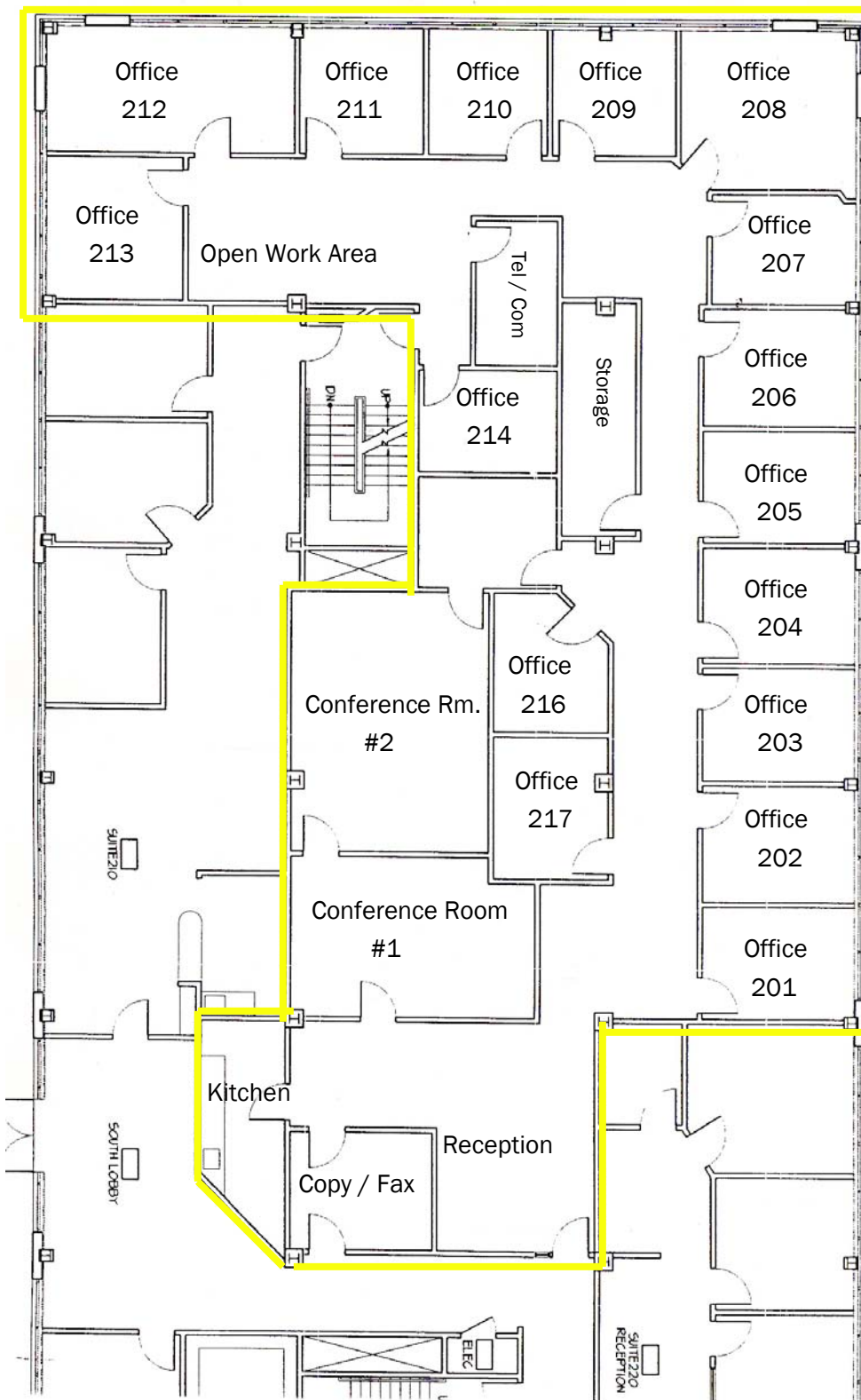
34 Washington Street
Wellesley Hills, MA 02481

781-235-4300

www.haynesmanagement.com

**OFFICE SERVICES
AT
MOUNT ROYAL**

Mount Royal Office Park
2 Mount Royal Ave.
Marlborough, MA



**Fully Furnished
Executive Offices**

**Leased on a
Month-to-Month
Basis**

**Telephone &
High-speed
Internet access**

**Shared use of
conference rooms,
kitchen, copy/fax,
and reception area**