

HAYNES MANAGEMENT,
INC.



1050 WALTHAM STREET LEXINGTON, MA



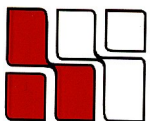
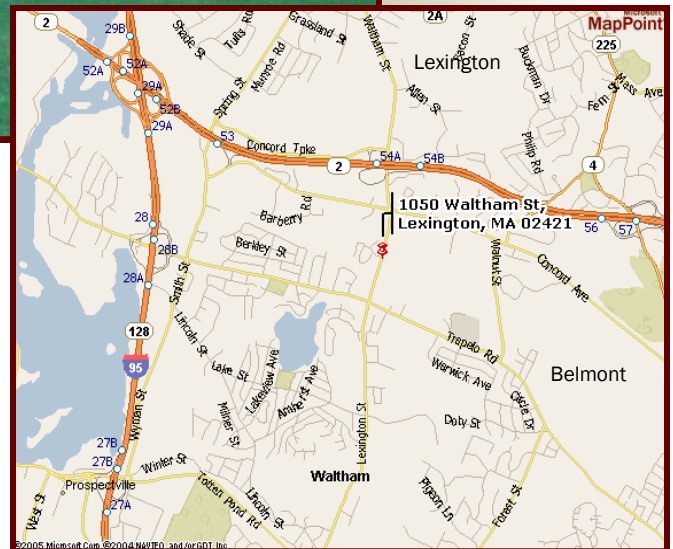
For Lease

282 r.s.f.

On level 4

LOCATED NEAR THE
JUNCTION OF RTE. 2 & RTE. 128
ON THE WALTHAM / LEXINGTON TOWN LINE

MANY AMENITIES WITHIN WALKING DISTANCE
SUCH AS: RESTAURANTS, BANKS,
OFFICE SUPPLIES AND MORE.



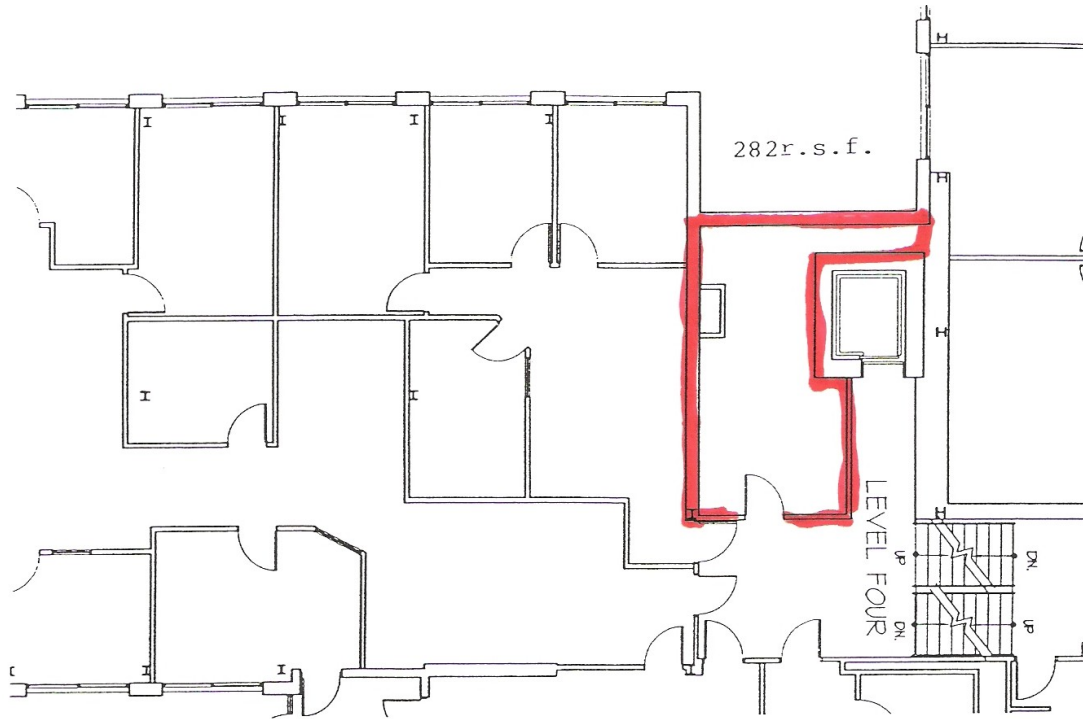
**HAYNES
MANAGEMENT, INC.**
The Suburban Office Experts

781-235-4300

www.haynesmanagement.com

All information furnished regarding this property is from sources deemed reliable and is submitted subject to errors, omissions, modifications and withdrawals without notice. No warranty or representation is made as to the accuracy of any information contained herein.

AVAILABLE SUITE 282 RSF



The Suburban Office Experts

For Information Call:

781-235-4300

All information furnished regarding this property is from sources deemed reliable and is submitted subject to errors, omissions, modifications and withdrawals without notice. No warranty or representation is made as to the accuracy of any information contained herein.